

LOC/DME I-DCA 109.9 Chan 36	APP CRS 007°	Rwy Idg 6869 TDZE 14 Apt Elev 14
---	------------------------	---

ILS or LOC RWY 1

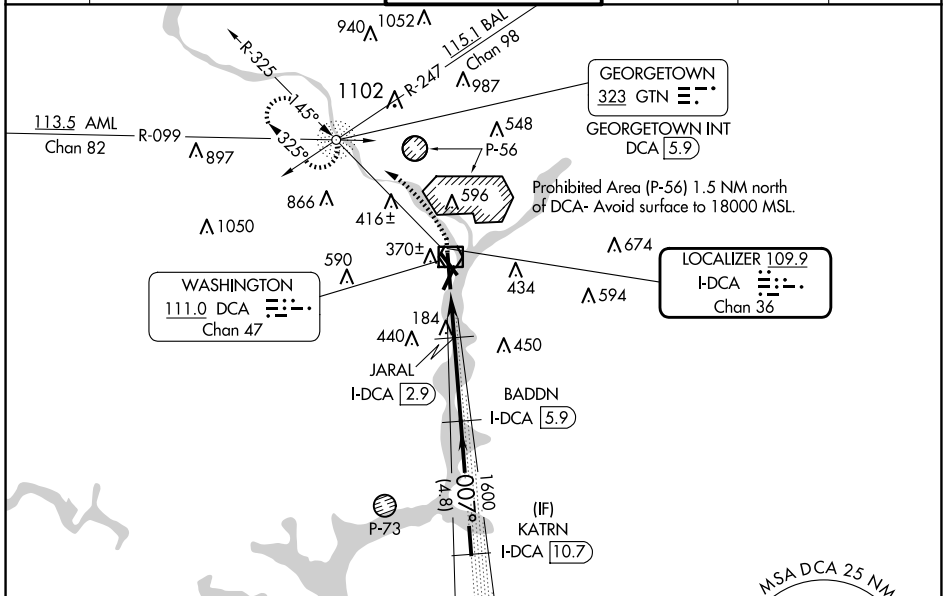
RONALD REAGAN WASHINGTON NTL (DCA)

DME required. RADAR required for procedure entry.

ALSIF-2
 MISSED APPROACH: Climb to 420 then climbing left turn to 2200 on DCA VOR/DME R-325 to GTN NDB/INT/DCA 5.9 DME and hold.

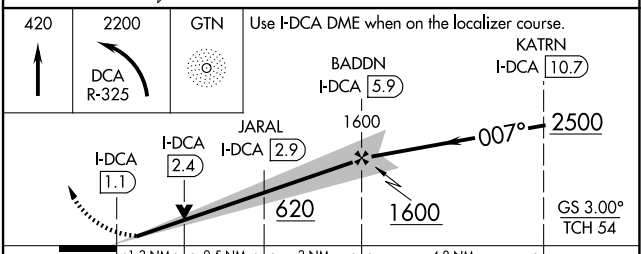
⚠ Circling NA northeast of Rwy 15-33.
 For inop ALS, increase S-LOC 1 Cats C and D visibility to 1 3/8 SM.

D-ATIS 132.65	POTOMAC APP CON 119.85 239.25 (WEST/SOUTH) 124.2 360.8 (EAST)	WASHINGTON TOWER 119.1 257.6	GND CON 121.7 257.6	CLNC DEL 128.25	CPDLC
-------------------------	---	--	-------------------------------	---------------------------	-------



ELEV 14	D	TDZE 14
REIL Rwys 4, 15, 22 and 33 HIRL Rwys 1-19 and 15-33 MIRL Rwy 4-22 TDZ/CL Rwy 1		

Inset chart details:
 - **TWR 229**
 - **007°**
 - **61**
 - **3204 X 150**
 - **7167 X 150**
 - **3009 X 150**
 - **22**
 - **1**



FAF to MAP 4.8 NM					
Knots	60	90	120	150	180
Min:Sec	4:48	3:12	2:24	1:55	1:36
C CIRCLING	A		B		D
S-ILS 1	214/18				200 (200-1/2)
S-LOC 1	480/24	466 (500-1/2)		480/50	466 (500-1)
	720-1	900-1 1/4		900-2 3/4	900-3
	706 (800-1)	886 (900-1 1/4)		886 (900-2 3/4)	886 (900-3)

NE-3, 20 MAR 2025 to 17 APR 2025

NE-3, 20 MAR 2025 to 17 APR 2025