

LOC/DME I-VVWH 111.35 Chan 50 (Y)	APP CRS 147°	Rwy Idg 6869 TDZE 13 Apt Elev 14
---	------------------------	---

LDA Z RWY 19

RONALD REAGAN WASHINGTON NTL (DCA)

DME required. RADAR required for procedure entry.

▼ Rwy 19 helicopter visibility reduction below 1 SM NA.
▲ Circling NA northeast of Rwy 15-33. Inop table does not apply.

MALSF

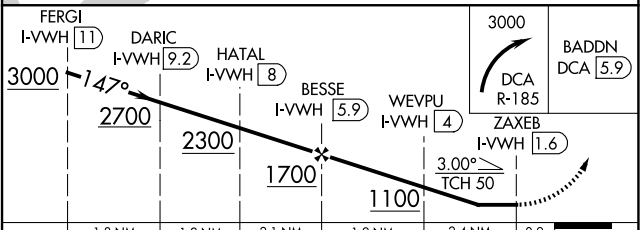
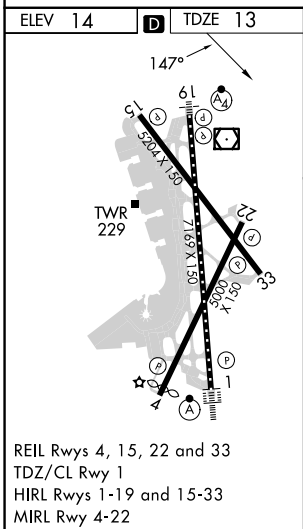
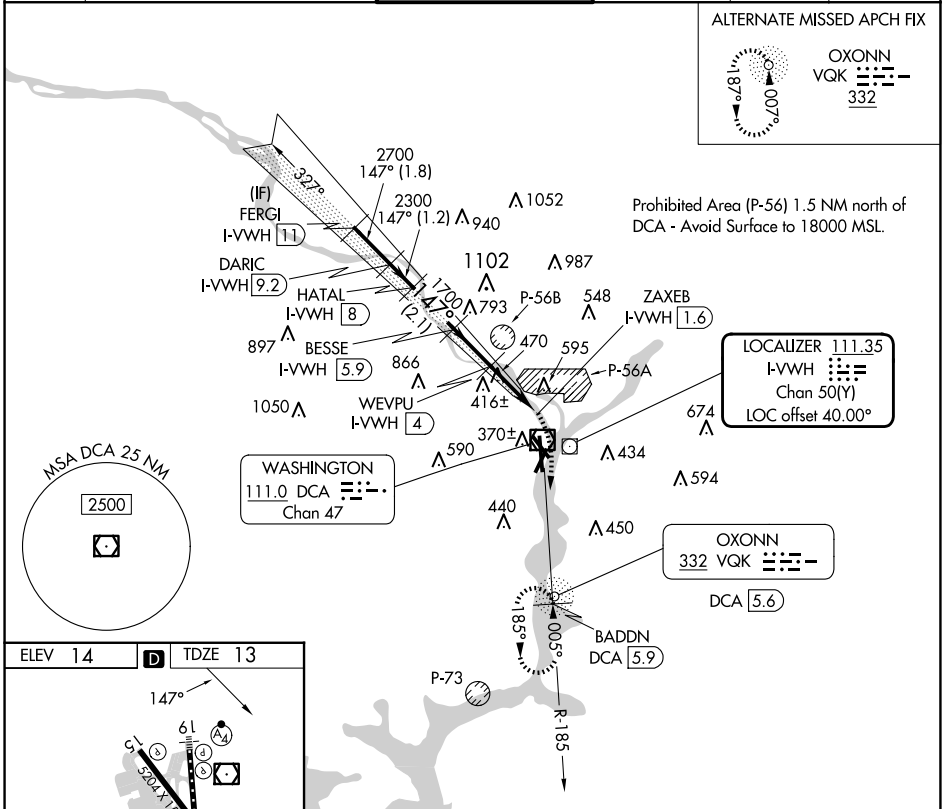
MISSED APPROACH: Climbing right turn to 3000 on DCA VOR/DME R-185 to BADDN/DCA VOR/DME 5.9 DME and hold, continue climb-in-hold to 3000.

D-ATIS 132.65	POTOMAC APP CON 119.85 239.25 124.2 360.8 (WEST/SOUTH) (EAST)	WASHINGTON TOWER 119.1 257.6	GND CON 121.7 257.6	CLNC DEL 128.25	CPDLC
-------------------------	---	--	-------------------------------	---------------------------	-------

ALTERNATE MISSED APCH FIX



Prohibited Area (P-56) 1.5 NM north of DCA - Avoid Surface to 18000 MSL.



CATEGORY	A	B	C	D
S-19	780/50 767 (800-1)	780/55 767 (800-1)	780-2½ 767 (800-2½)	
C CIRCLING	780-1 766 (800-1)	780-1¼ 766 (800-1¼)	840-2½ 826 (900-2½)	900-3 886 (900-3)

NE-3, 20 MAR 2025 to 17 APR 2025

NE-3, 20 MAR 2025 to 17 APR 2025