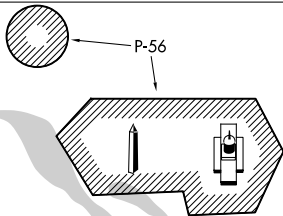


# MOUNT VERNON VISUAL RUNWAY 1

AL-443 (FAA)

WASHINGTON, DC

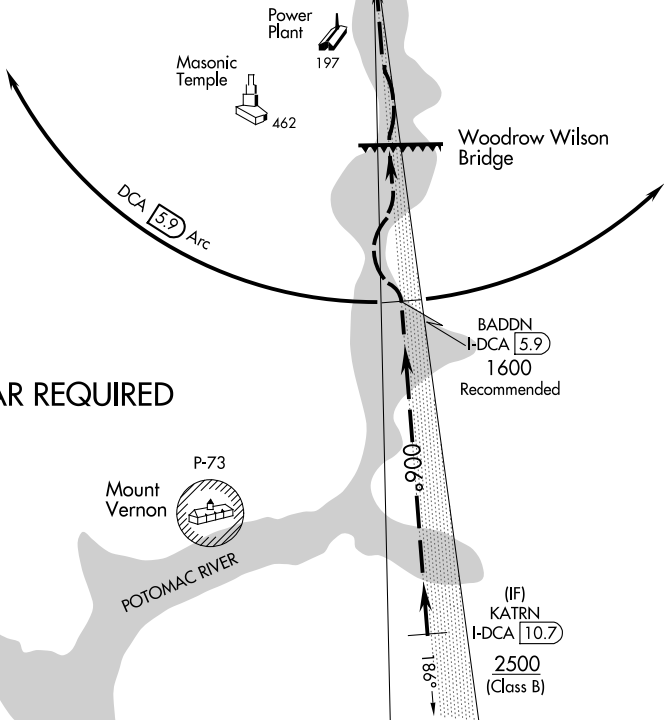
D-ATIS 132.65  
 POTOMAC APP CON  
 119.85 239.25 (WEST/SOUTH)  
 124.2 360.8 (EAST)  
 WASHINGTON TOWER  
 119.1 257.6  
 GND CON  
 121.7 257.6  
 CLNC DEL  
 128.25  
 CPDLC



LOCALIZER 109.9  
 I-DCA [5.9] Chan 36

WASHINGTON  
 111.0 DCA [5.9] Chan 47

NOTE: PROHIBITED AREA (P-56) 1.5 NM NORTH OF DCA-AVOID-SURFACE TO 18000 MSL.



## RADAR REQUIRED

Vertical Guidance  
 Navaid and Angle:  
 I-DCA 3.00°

Weather Minimums: 3000  
 feet ceiling and 4 mile  
 visibility.

1 NM	2	3	4	5	6	7	8	9	10	11	12	13
------	---	---	---	---	---	---	---	---	----	----	----	----

Aircraft may proceed via DCA VOR/DME R-185 (inbound 005°), or via the ILS or LOC/DME RWY 1 approach to 5.9 DME, then follow the Potomac River to the airport.

# MOUNT VERNON VISUAL RUNWAY 1

38°51'N-77°02'W

WASHINGTON, DC

Amdt 4 22AUG13

RONALD REAGAN WASHINGTON NTL (DCA)

NE-3, 20 MAR 2025 to 17 APR 2025

NE-3, 20 MAR 2025 to 17 APR 2025