

# NUMMY THREE ARRIVAL

WASHINGTON, DC

NE-3, 20 MAR 2025 to 17 APR 2025

## ARRIVAL ROUTE DESCRIPTION

**BUCKO TRANSITION (BUCKO.NUMMY3):** From over BUCKO on ESL R-282 to ESL VOR/DME, then on ESL R-103 to DRUZZ, then on AML R-297 to AML VOR/DME.

**Landing DCA Rwy 1, 4, 33, ADW Rwys 1L, 1R, and DAA:** From over AML VOR/DME on AML VOR/DME R-130 to cross NUMMY at 6000, then on heading 187°, expect radar vectors to final approach course.

**Landing DCA Rwys 15, 19, 22 and ADW Rwys 19L, 19R:** Depart AML VOR/DME on heading 070°, expect radar vectors to final approach course.

POTOMAC APP CON  
118.675 323.175  
DCA D-ATIS 132.65  
KADW D-ATIS  
133.675 251.05  
\*KDAA ATIS  
128.175

MORGANTOWN  
111.6 MGW  
Chan 53

KESSEL  
110.8 ESL  
Chan 45

FL230

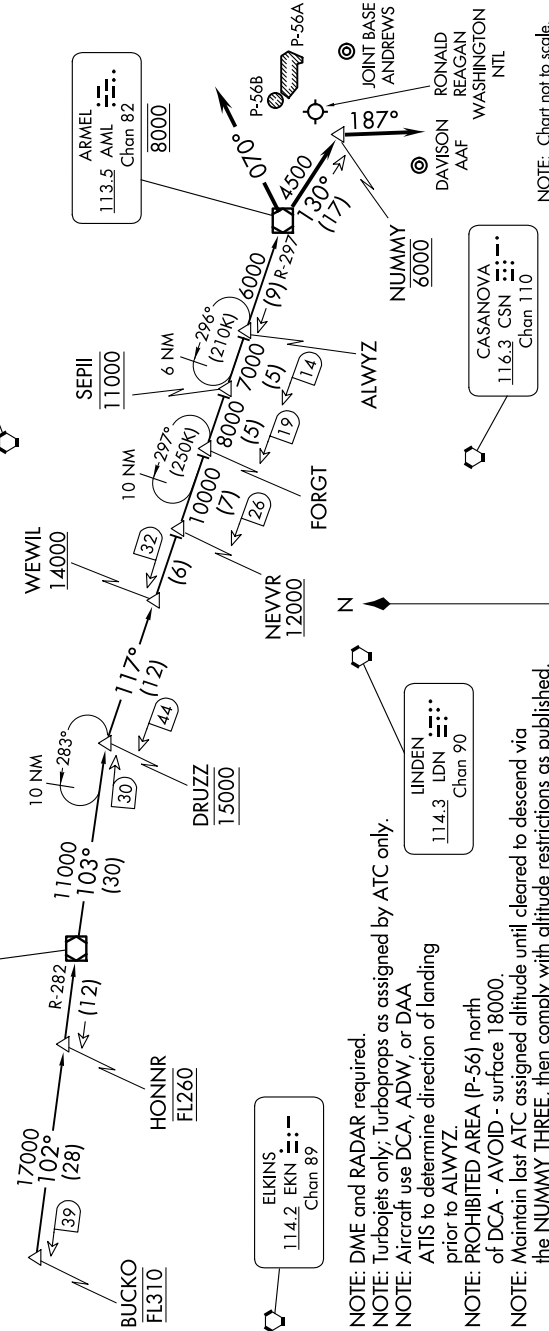
MARTINSBURG  
112.1 MRB  
Chan 58

HONINR  
FL260

ELKINS  
114.2 EKN  
Chan 89

LINDEN  
114.3 LDN  
Chan 90

CASANOVA  
116.3 CSN  
Chan 110



**NOTE:** DME and RADAR required.  
**NOTE:** Turboprops only; Turboprops as assigned by ATC only.  
**NOTE:** Aircraft use DCA, ADW, or DAA ATIS to determine direction of landing prior to ALWYZ.  
**NOTE:** PROHIBITED AREA (P-56) north of DCA - AVOID - surface 18000.  
**NOTE:** Maintain last ATC assigned altitude until cleared to descend via the NUMMY THREE, then comply with altitude restrictions as published.

NOTE: Chart not to scale.

# NUMMY THREE ARRIVAL

WASHINGTON, DC

NE-3, 20 MAR 2025 to 17 APR 2025