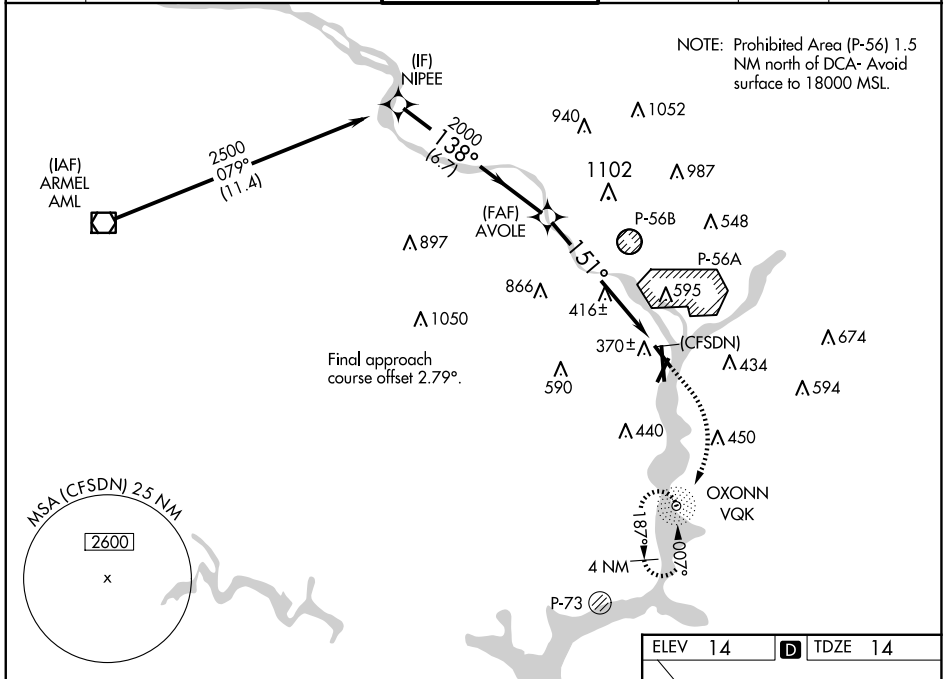


WAAS CH 70737 W15A	APP CRS 151°	Rwy Idg 5204 TDZE 14 Apt Elev 14
--	------------------------	---

RNAV (GPS) RWY 15

RONALD REAGAN WASHINGTON NTL (DCA)

RNP APCH - GPS		MISSED APPROACH: (Do not exceed 210K until reaching 600 feet MSL) Climb to 600 then climbing right turn to 1800 direct VQK NDB and hold.		
<p>▼ Circling NA northeast of Rwy 15-33. Rwy 15 helicopter visibility reduction below ¾ SM NA. For uncompensated Baro-VNAV systems, LNAV/VNAV NA below -11°C or above 54°C.</p> <p>▲</p>				
D-ATIS 132.65	POTOMAC APP CON 119.85 239.25 (WEST/SOUTH) 124.2 360.8 (EAST)	WASHINGTON TOWER 119.1 257.6	GND CON 121.7 257.6	CLNC DEL 128.25
		CPDLC		



NE-3, 20 MAR 2025 to 17 APR 2025

NE-3, 20 MAR 2025 to 17 APR 2025

VGSI and RNAV glidepath not coincident (VGSI Angle 3.00/TCH 36).

NIPEE	AVOLE	600	1800	VQK
2500	2000	↑	↷	⊙
173.8°	2000	* LNAV only.		
GP 3.00°		*2.3 NM to (CFSDN)	(CFSDN)	
TCH 55				
	6.7 NM	3.8 NM	2.3 NM	

CATEGORY	A	B	C	D
LPV DA		395-1 1/8	381 (400-1 1/8)	
LNAV/VNAV DA		749-2	735 (800-2)	
LNAV MDA	800-1 786 (800-1)	800-1 1/4 786 (800-1 1/4)	800-2 1/2	786 (800-2 1/2)
CIRCLING	800-1 786 (800-1)	800-1 1/4 786 (800-1 1/4)	840-2 1/2 826 (900-2 1/2)	900-3 886 (900-3)

