


APP CRS	Rwy Idg	6869
007°	TDZE	14
	Apt Elev	14

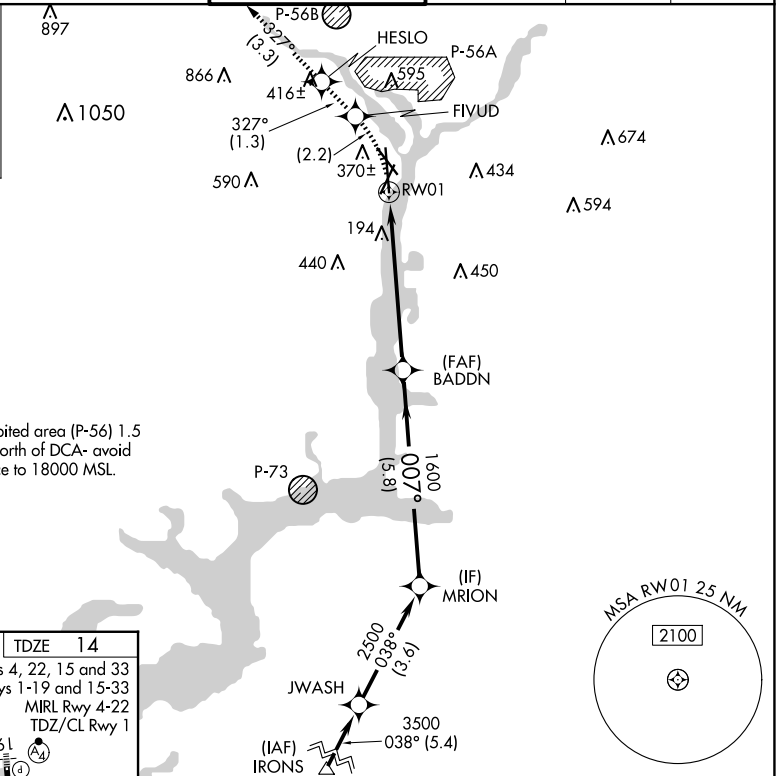
RNAV (RNP) RWY 1

RONALD REAGAN WASHINGTON NTL (DCA)

▽ For uncompensated Baro-VNAV systems, procedure NA below -10°C (14°F) or above 48°C (120°F). RF required. GPS required. Missed approach requires RNP less than 1.0. For inop ALS, increase RNP 0.30 all Cats visibility to 1¼ mile.

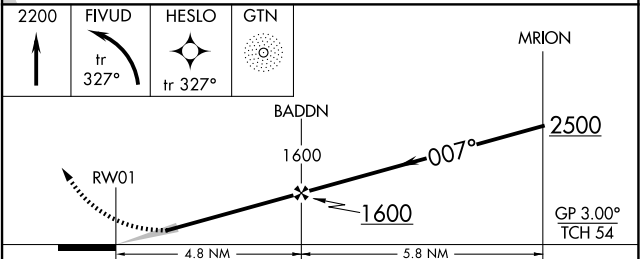
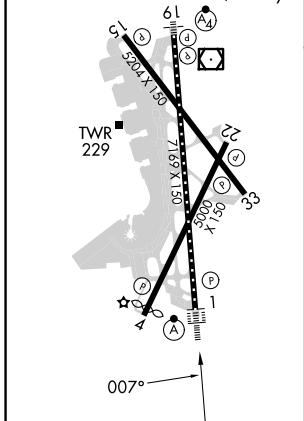
ALSF-2

MISSED APPROACH: (Do not exceed 185K until FIVUD) Climb to 2200 left turn to FIVUD and on track 327° to HESLO and on track 327° to GTN NDB and hold.

D-ATIS 132.65	POTOMAC APP CON 119.85 239.25 (WEST/SOUTH) 124.2 360.8 (EAST)	WASHINGTON TOWER 119.1 257.6	GND CON 121.7 257.6	CLNC DEL 128.25	CPDLC
-------------------------	---	--	-------------------------------	---------------------------	-------



ELEV 14	D	TDZE 14
---------	----------	---------

REIL Rwy 4, 22, 15 and 33
 HIRL Rwy 1-19 and 15-33
 MIRL Rwy 4-22
 TDZ/CL Rwy 1



CATEGORY	A	B	C	D
RNP 0.30 DA	552/60		538 (600-1¼)	

AUTHORIZATION REQUIRED

NE-3, 20 MAR 2025 to 17 APR 2025

NE-3, 20 MAR 2025 to 17 APR 2025