

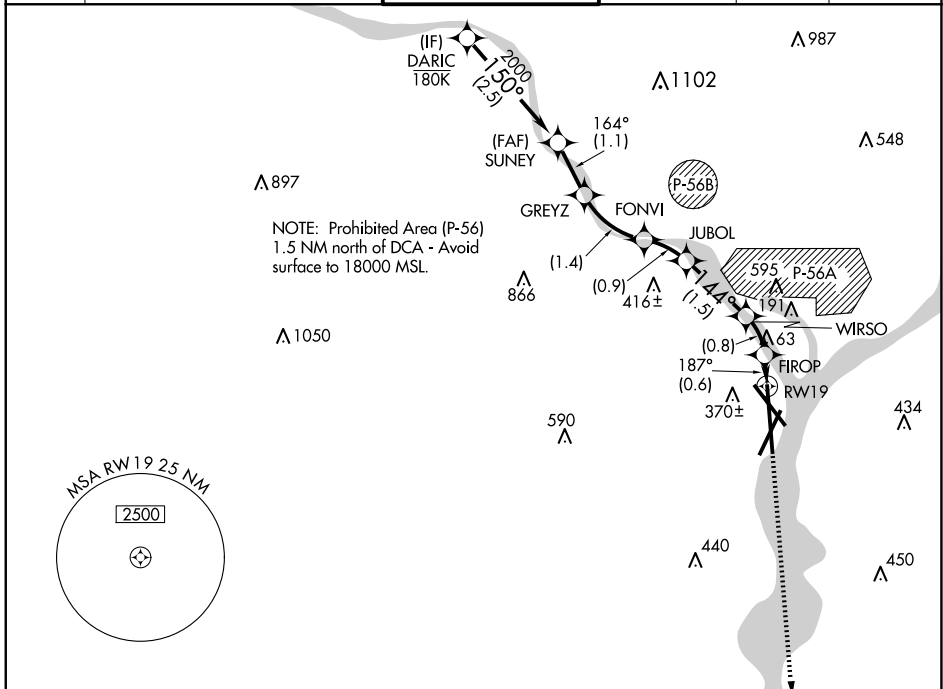
APP CRS	Rwy Idg	6869
187°	TDZE	13
	Apt Elev	14

RNAV (RNP) Z RWY 19

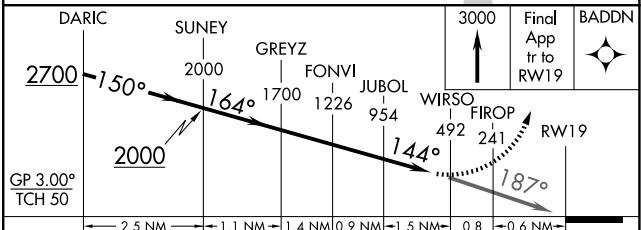
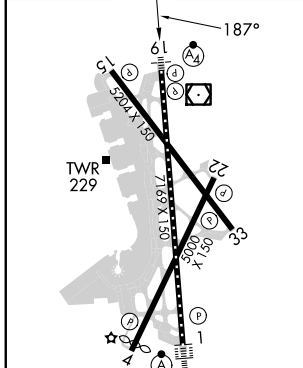
RONALD REAGAN WASHINGTON NTL (DCA)

RNP AR APCH - GPS.	MALSF	MISSED APPROACH: Climb to 3000 on the final approach track to RW19 then direct BADDN and hold, continue climb-in-hold to 3000.
▼ Inop table does not apply. For uncompensated Baro-VNAV systems, procedure NA below -8°C or above 54°C.		

D-ATIS	POTOMAC APP CON	WASHINGTON TOWER	GND CON	CLNC DEL	CPDLC
132.65	119.85 239.25 (WEST/SOUTH) 124.2 360.8 (EAST)	119.1 257.6	121.7 257.6	128.25	



ELEV	14	D	TDZE	13
------	----	----------	------	----



CATEGORY	A	B	C	D
RNP 0.11 DA		491/60	478 (500-1¼)	
RNP 0.30 DA		550-1½	537 (600-1½)	

AUTHORIZATION REQUIRED