

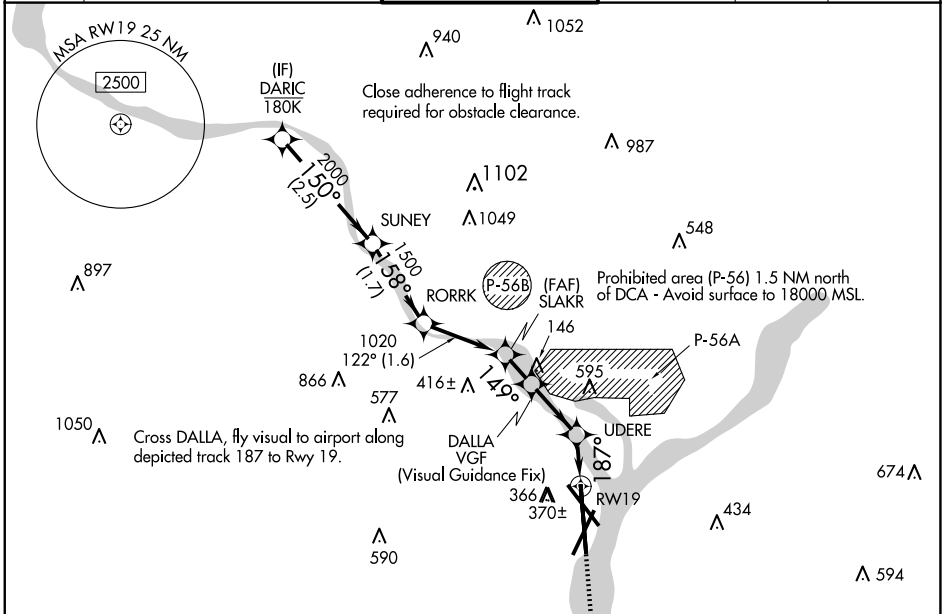
APP CRS	Rwy Idg	<b>6869</b>
<b>187°</b>	TDZE	<b>13</b>
	Apt Elev	<b>14</b>

# RNAV (GPS) Y RWY 19

RONALD REAGAN WASHINGTON NTL (DCA)

RNP APCH - GPS.		MALS F A4	MISSED APPROACH: (Do not exceed 165K until Rwy 19) Climb to 3000 on FMS lateral path to Rwy 19, then direct BADDN and hold, continue climb-in-hold to 3000. If unable to follow the FMS lateral path, climb to 3000 and turn to heading 187° direct BADDN and hold, continue climb-in-hold to 3000.	
RADAR required.				
<p>▼</p> <p>▲ Rwy 19 helicopter visibility reduction below ¾ SM NA. Inop table does not apply.</p>				

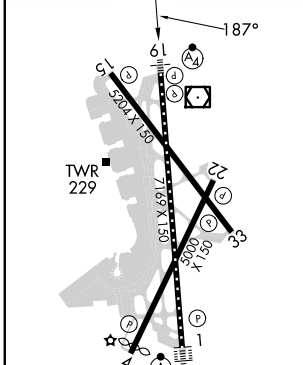
D-ATIS	POTOMAC APP CON (WEST/SOUTH)	WASHINGTON TOWER	GND CON	CLNC DEL	CPDLC
<b>132.65</b>	<b>119.85 239.25</b> <b>124.2 360.8</b> (EAST)	<b>119.1 257.6</b>	<b>121.7 257.6</b>	<b>128.25</b>	



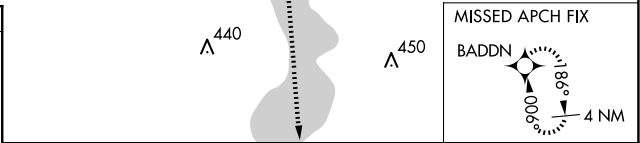
NE-3, 20 MAR 2025 to 17 APR 2025

NE-3, 20 MAR 2025 to 17 APR 2025

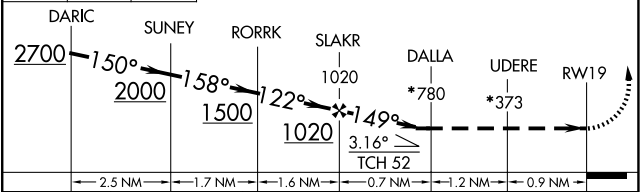
ELEV	14	D	TDZE	13
------	----	---	------	----



TDZ/CL Rwy 1  
MIRL Rwy 4-22  
REIL Rwys 4, 22, 15 and 33  
HIRL Rwys 1-19 and 15-33



3000	FMS Lateral to RWY19	BADDN	*Check altitude. Turns required in the visual segment.
------	----------------------	-------	--



CATEGORY	A	B	C	D
LNAV MDA	780-2½		767 (800-2½)	