

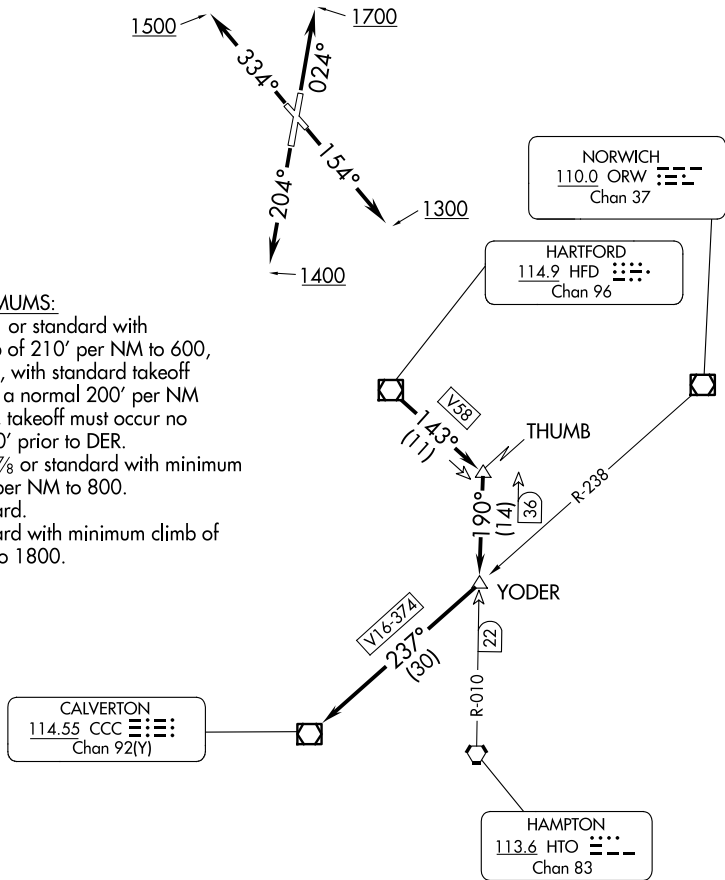
COASTAL NINE DEPARTURE

ATIS
127.1 263.15
GND CON
121.7 289.4
WESTFIELD TOWER ★
118.9 (CTAF) 251.1
BRADLEY DEP CON
125.35 281.5

**TOP ALTITUDE:
3000**

TAKEOFF MINIMUMS:

- Rwy 2: 200-1½ or standard with minimum climb of 210' per NM to 600, or alternatively, with standard takeoff minimums and a normal 200' per NM climb gradient, takeoff must occur no later than 1200' prior to DER.
- Rwy 15: 400-1⅔ or standard with minimum climb of 460' per NM to 800.
- Rwy 20: Standard.
- Rwy 33: Standard with minimum climb of 340' per NM to 1800.



NE-1, 20 MAR 2025 to 17 APR 2025

NE-1, 20 MAR 2025 to 17 APR 2025

NOTE: RADAR required.

NOTE: Initial departure headings are predicated on avoiding noise sensitive areas, flight crew awareness and compliance is important in minimizing noise impacts on surrounding communities.

(NARRATIVE ON FOLLOWING PAGE)

NOTE: Chart not to scale.

COASTAL NINE DEPARTURE



DEPARTURE ROUTE DESCRIPTION

TAKEOFF RUNWAY 2: Climb on heading 024° to 1700, then as assigned for radar vectors to HFD VOR/DME, thence....

TAKEOFF RUNWAY 15: Climb on heading 154° to 1300, then as assigned for radar vectors to HFD VOR/DME, thence....

TAKEOFF RUNWAY 20: Climb on heading 204° to 1400, then as assigned for radar vectors to HFD VOR/DME, thence....

TAKEOFF RUNWAY 33: Climb on heading 334° to 1500, then as assigned for radar vectors to HFD VOR/DME, thence....

....from over HFD VOR/DME proceed on HFD VOR/DME R-143 to THUMB INT, then on HTO VOR/DME R-010 to YODER INT, then on CCC VOR/DME R-057 to CCC VOR/DME, then on assigned route. Maintain 3000 or assigned altitude. Expect clearance to requested flight level 10 minutes after departure.

NE-1, 20 MAR 2025 to 17 APR 2025

NE-1, 20 MAR 2025 to 17 APR 2025