

HI-ILS or LOC RWY 20

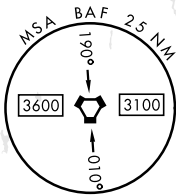
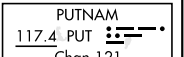
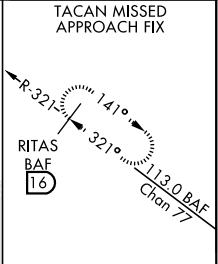
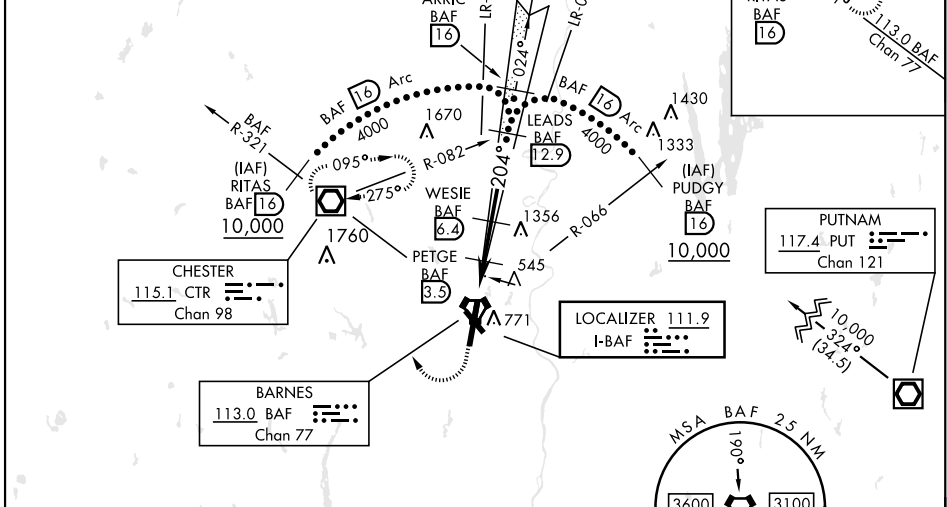
LOC I-BAF 111.9	APCH CRS 204°	Rwy ldg TDZE 8919 270 Arprt Elev 270	AL-446 [USAF]	WESTFIELD-BARNES RGNL (KBAF)
---------------------------	-------------------------	---	---------------	------------------------------

A5
MALS
 MISSED APPROACH: Climb to 1300, then climbing right turn to 4000 direct CTR VOR/DME and hold, continue climb in hold to 4000.
 (TACAN act climb to 1300, then climbing right turn to 4000 via hdg 010° and BAF VORTAC R-321 to RITAS and hold.)

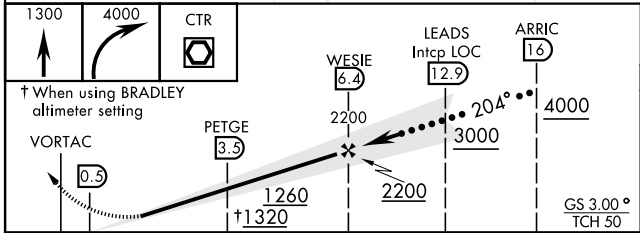
ATIS 127.1 263.15	BRADLEY APP CON 125.35 281.5	WESTFIELD TOWER ★ 118.9 (CTAF) 0 251.1	GND CON 121.7 289.4
-----------------------------	--	--	-------------------------------

*** When ALS inop, increase CAT E vis to 3 miles.
 When local altimeter setting not received, use Bradley Intl altimeter setting.
3491

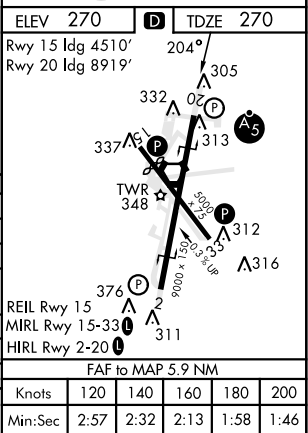
Night Landing: Rwy 15, Rwy 20, Rwy 33 NA at night.
 DME from BAF VORTAC



EMERG SAFE ALT 100 NM 7000



CATEGORY	C	D	E
S-ILS 20*	520/50	250	(300-1)
S-LOC 20**	800/55	530	(600-1¼)
C CIRCLING	1160-2¾	890 (900-2¾)	1660-3
BRADLEY INTL ALTIMETER			
S-ILS 20*	564/50	294	(300-1)
S-LOC 20***	860-1¼	590	(600-1¼)
C CIRCLING	1200-2¾ 930 (1000-2¾)	1200-3 930 (1000-3)	1680-3 1410 (1500-3)



HI-ILS or LOC RWY 20

NE-1, 20 MAR 2025 to 17 APR 2025