

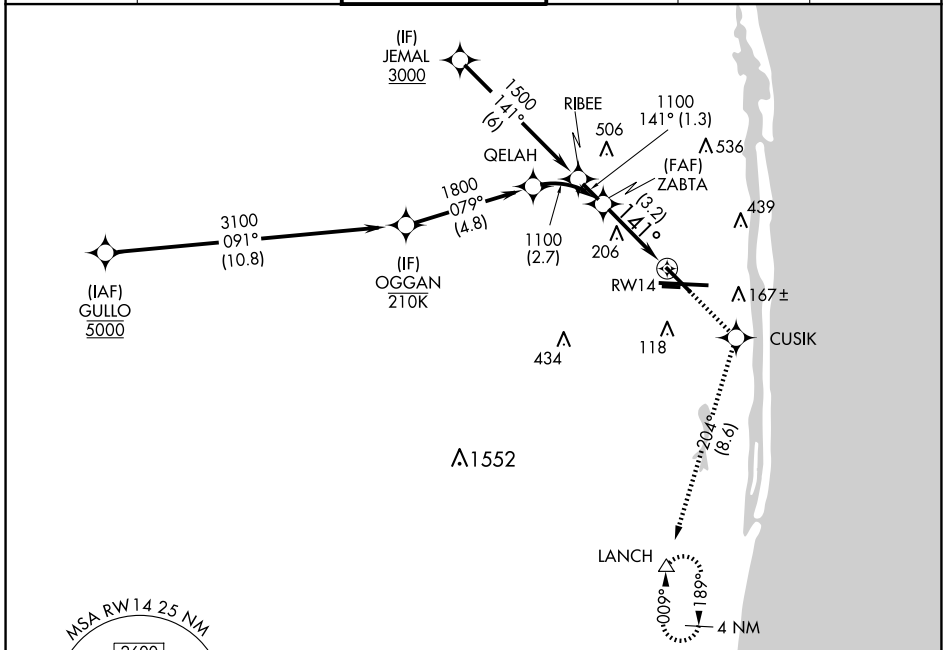
APP CRS	Rwy ldg	<b>6000</b>
<b>141°</b>	TDZE	<b>17</b>
	Apt Elev	<b>20</b>

# RNAV (RNP) Z RWY 14

PALM BEACH INTL (PBI)

RNP AR APCH - GPS.		MISSED APPROACH: Climb to 2000 direct CUSIK and on track 204 to LANCH and hold.			
▼ For uncompensated Baro-VNAV systems, procedure NA below 6°C or above 54°C.					

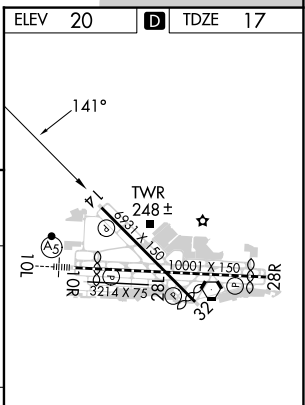
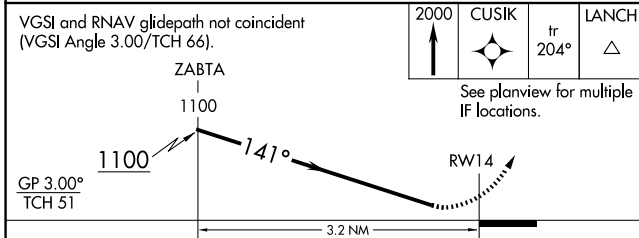
D-ATIS	PALM BEACH APP CON	PALM BEACH TOWER	GND CON	CLNC DEL	CPDLC
<b>123.75</b>	<b>128.3 317.4</b>	<b>119.1 257.8</b>	<b>121.9 284.6</b>	<b>121.6 284.6</b>	



SE-3, 20 MAR 2025 to 17 APR 2025

SE-3, 20 MAR 2025 to 17 APR 2025

ELEV	<b>20</b>	<b>D</b>	TDZE	<b>17</b>
------	-----------	----------	------	-----------



CATEGORY	A	B	C	D
RNP 0.30 DA		354-1	337 (400-1)	

## AUTHORIZATION REQUIRED

HIRL Rwy 10L-28R  
 REIL Rwy 10R, 14, 28L, 28R and 32  
 MIRL Rwy 14-32 and 10R-28L