

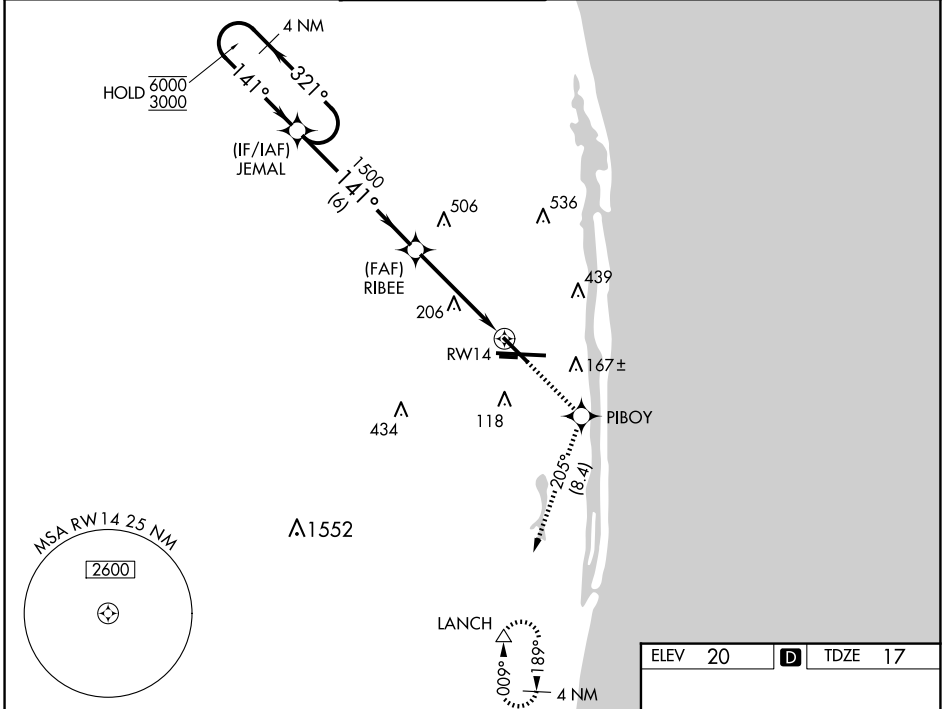
WAAS CH <b>40018</b> <b>W14A</b>	APP CRS <b>141°</b>	Rwy Idg <b>6000</b> TDZE <b>17</b> Apt Elev <b>20</b>
--	------------------------	---

# RNAV (GPS) Y RWY 14

PALM BEACH INTL (PBI)

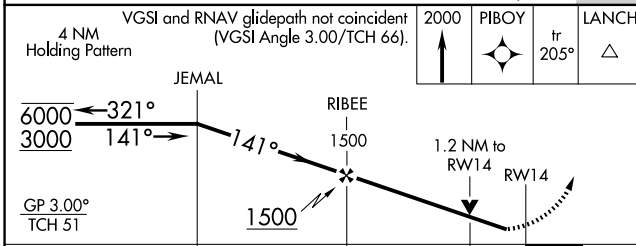
RNP APCH - GPS.		MISSED APPROACH: Climb to 2000 direct PIBOY and on track 205° to LANCH and hold.	
<p><b>▽</b> Rwy 14 helicopter visibility reduction below <math>\frac{3}{4}</math> SM NA. For uncompensated Baro-VNAV systems, LNAV/VNAV NA below 6°C or above 54°C.</p> <p><b>▲</b></p>			

D-ATIS <b>123.75</b>	PALM BEACH APP CON <b>128.3 317.4</b>	PALM BEACH TOWER <b>119.1 257.8</b>	GND CON <b>121.9 284.6</b>	CLNC DEL <b>121.6 284.6</b>	CPDLC
-------------------------	--	--	-------------------------------	--------------------------------	-------

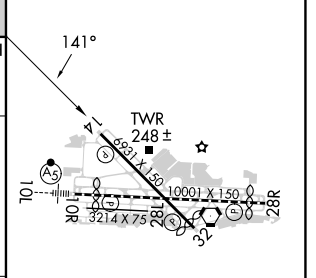


SE-3, 20 MAR 2025 to 17 APR 2025

SE-3, 20 MAR 2025 to 17 APR 2025



ELEV 20	<b>D</b>	TDZE 17
---------	----------	---------



CATEGORY	A	B	C	D
LPV DA		269- $\frac{3}{4}$	252 (300- $\frac{3}{4}$ )	
LNAV/VNAV DA		338-1	321 (400-1)	
LNAV MDA	460-1	443 (500-1)	460- $\frac{1}{8}$	443 (500- $\frac{1}{8}$ )
<b>C</b> CIRCLING	560-1	540 (600-1)	740-2 720 (800-2)	780-2 $\frac{1}{2}$ 760 (800-2 $\frac{1}{2}$ )

HIRL Rwy 10L-28R  
REIL Rwy 10R, 14, 28L, 28R and 32  
MIRL Rwy 14-32 and 10R-28L