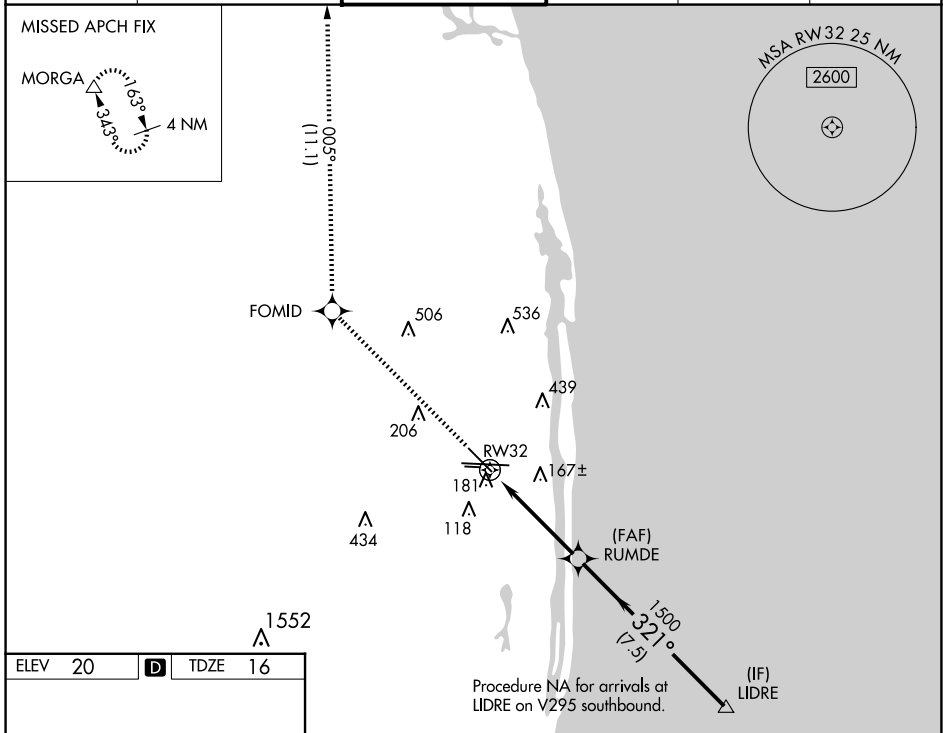


WAAS CH <b>62903</b> <b>W32A</b>	APP CRS <b>321°</b>	Rwy Idg TDZE <b>16</b> Apt Elev <b>20</b>	<b>6513</b>
--	------------------------	---	-------------

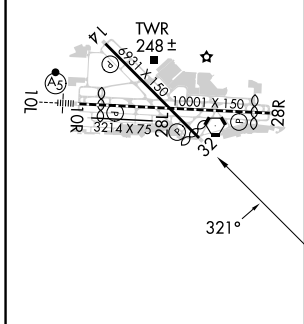
# RNAV (GPS) Y RWY 32

PALM BEACH INTL (PBI)

RNP APCH - GPS.			MISSED APPROACH: Climb to 3000 direct FOMID and on track 005° to MORGA and hold.		
<p><b>▼</b> Circling to Rwy 10L NA at night. Rwy 32 helicopter visibility reduction below 3/4 SM NA.  <b>▲</b> For uncompensated Baro-VNAV systems, LNAV/VNAV NA below 6°C or above 54°C.</p>					
D-ATIS <b>123.75</b>	PALM BEACH APP CON <b>128.3 317.4</b>	PALM BEACH TOWER <b>119.1 257.8</b>	GND CON <b>121.9 284.6</b>	CLNC DEL <b>121.6 284.6</b>	CPDLC

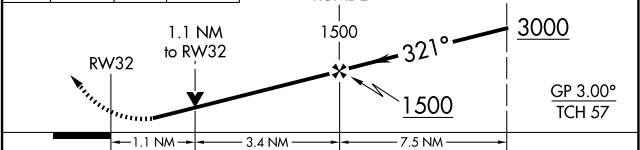


ELEV 20	<b>D</b>	TDZE 16
---------	----------	---------



HIRL Rwy 10L-28R  
 REIL Rwys 10R, 14, 28L, 28R and 32  
 MIRL Rwys 14-32 and 10R-28L

3000	FOMID $\diamond$	MORGA $\triangle$	ir 005°	VGSI and RNAV glidepath not coincident (VGSI Angle 3.25/TCH 57).
------	------------------	-------------------	---------	--



CATEGORY	A	B	C	D
LPV DA	266-3/4		250 (300-3/4)	
LNAV/VNAV DA	342-1		326 (400-1)	
LNAV MDA	440-1	424 (500-1)	440-1 1/4	424 (500-1 1/4)
<b>C</b> CIRCLING	560-1	540 (600-1)	740-2 720 (800-2)	780-2 1/2 760 (800-2 1/2)

SE-3, 20 MAR 2025 to 17 APR 2025

SE-3, 20 MAR 2025 to 17 APR 2025