

**TOP ALTITUDE:**  
**Rwy 10L, 14, 28R: 12000**  
**Rwy 32: ASSIGNED BY ATC**

TAKEOFF MINIMUMS

Rwys 10L, 14, 28R, 32: Standard with minimum climb of 500' per NM to 520.

D-ATIS  
123.75  
CLNC DEL  
121.6 284.6  
CPDLC  
GND CON  
121.9 284.6  
PALM BEACH TOWER  
119.1 257.8  
PALM BEACH DEP CON  
128.3 317.4

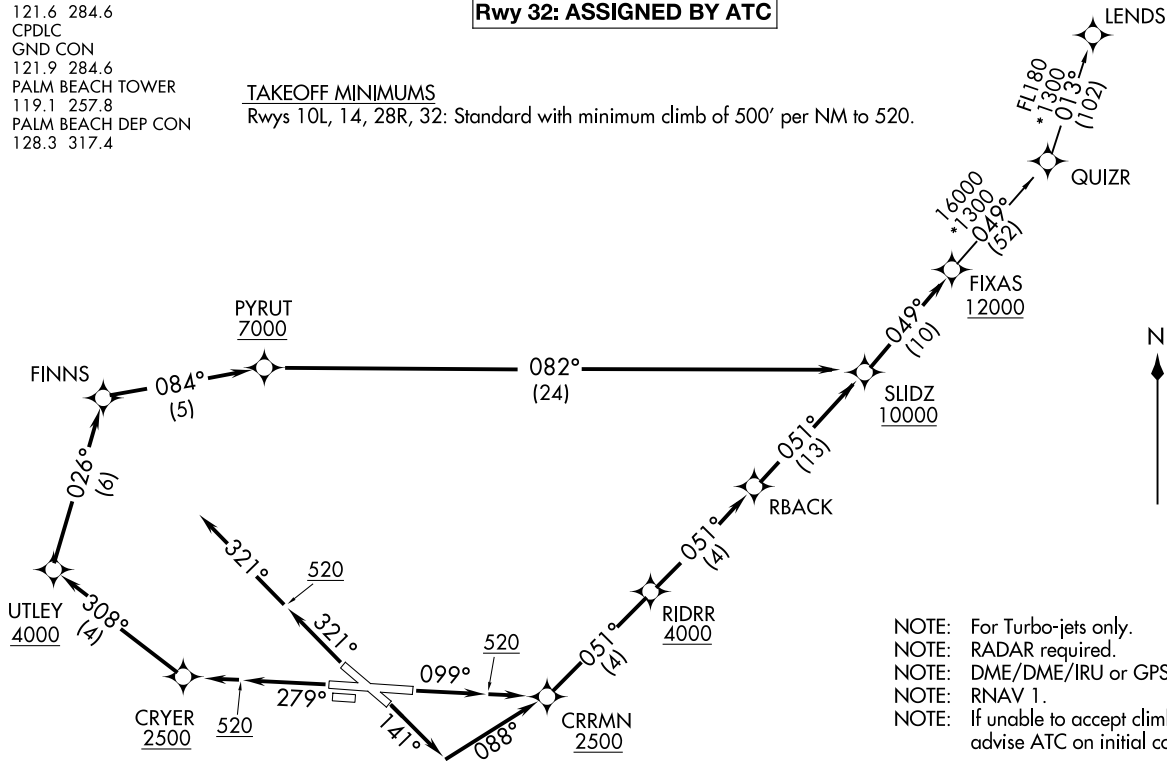
SLIDZ TWO DEPARTURE (RNAV)  
(SLIDZ2.SLIDZ) 12AUG21

WEST PALM BEACH, FLORIDA  
PALM BEACH INTL (PBI)

(SLIDZ2.SLIDZ) 22195  
SLIDZ TWO DEPARTURE (RNAV)

AL-449 (FAA)

PALM BEACH INTL (PBI)  
WEST PALM BEACH, FLORIDA



- NOTE: For Turbo-jets only.
- NOTE: RADAR required.
- NOTE: DME/DME/IRU or GPS required.
- NOTE: RNAV 1.
- NOTE: If unable to accept climb rates, advise ATC on initial contact.

NOTE: Chart not to scale.

(NARRATIVE ON FOLLOWING PAGE)

# SLIDZ TWO DEPARTURE (RNAV)



## DEPARTURE ROUTE DESCRIPTION

TAKEOFF RUNWAY 10L: Climb on heading 099° to 520, then direct to cross CRRMN at or above 2500, then on track 051° to cross RIDRR at or above 4000, then on track 051° to RBACK, then on track 051° to cross SLIDZ at or above 10000, thence. . . .

TAKEOFF RUNWAY 14: Climb on heading 141° to intercept course 088° to cross CRRMN at or above 2500, then on track 051° to cross RIDRR at or above 4000, then on track 051° to RBACK, then on track 051° to cross SLIDZ at or above 10000, thence. . . .

TAKEOFF RUNWAY 28R: Climb on heading 279° to 520, then direct to cross CRYER at or above 2500, then on track 308° to cross UTLEY at or above 4000, then on track 026° to FINNS, then on track 084° to cross PYRUT at or above 7000, then on track 082° to cross SLIDZ at or above 10000, thence. . . .

. . . .on track 049° to cross FIXAS at or above 12000, then on transition.  
Expect clearance to filed altitude within 10 minutes after departure.

TAKEOFF RUNWAY 32: Climb on heading 321° to 520, then on heading 321° or as assigned by ATC, for vectors to SLIDZ at or above 10000, thence. . . .

. . . .on track 049° to cross FIXAS at or above 12000, then on transition. Maintain ATC assigned altitude, expect clearance to filed altitude within 10 minutes after departure.

### LEND5 TRANSITION (SLIDZ2.LEND5)

SE-3, 20 MAR 2025 to 17 APR 2025

SE-3, 20 MAR 2025 to 17 APR 2025