

TBIRD SIX DEPARTURE (RNAV) Departure Routes

PALM BEACH DEP CON
128.3 317.4
D-ATIS
123.75
CLNC DEL
121.6 284.6
CPDLC
GND CON
121.9 284.6
PALM BEACH TOWER
119.1 257.8

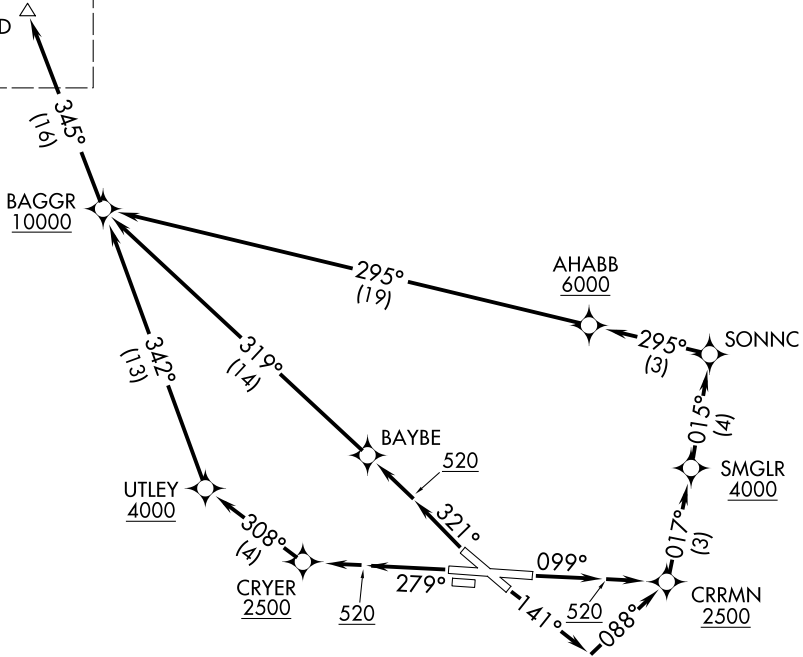
RNAV 1 - DME/DME/IRU or GPS.

RADAR required for non-GPS
equipped aircraft.

**TOP ALTITUDE:
11000**

See following
page for
transition routes.

TBIRD 



TAKEOFF MINIMUMS

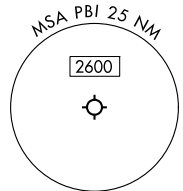
Rwys 10L, 14, 28R, 32: Standard with
minimum climb of 500'/NM to 520.

NOTE: Jets aircraft only.

NOTE: CHEFS Transition, for use by MCO
or DAB area arrivals.

NOTE: All aircraft: Climb gradients: If unable to accept climb
rate advise ATC prior to departure.

NOTE: MATLK Transition for use by aircraft filed to
Jacksonville area airports only, or as assigned by ATC.



NOTE: Chart not to scale.

(CONTINUED ON FOLLOWING PAGE)

SE-3, 20 MAR 2025 to 17 APR 2025

SE-3, 20 MAR 2025 to 17 APR 2025

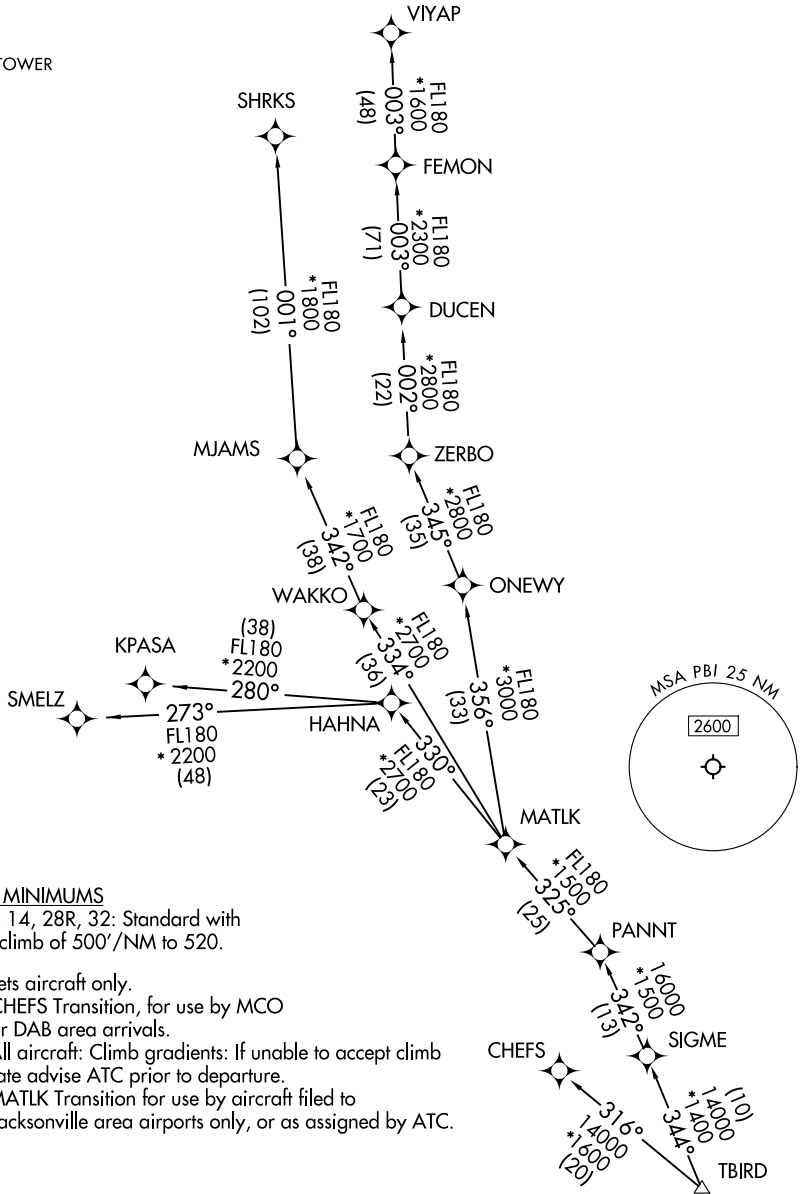
TBIRD SIX DEPARTURE (RNAV) Transition Routes

PALM BEACH DEP CON
128.3 317.4
D-ATIS
123.75
CLNC DEL
121.6 284.6
CPDLC
GND CON
121.9 284.6
PALM BEACH TOWER
119.1 257.8

RNAV 1 - DME/DME/IRU or GPS.

RADAR required for non-GPS equipped aircraft.

**TOP ALTITUDE:
11000**



TAKEOFF MINIMUMS

Rwys 10L, 14, 28R, 32: Standard with minimum climb of 500'/NM to 520.

- NOTE: Jets aircraft only.
- NOTE: CHEFS Transition, for use by MCO or DAB area arrivals.
- NOTE: All aircraft: Climb gradients: If unable to accept climb rate advise ATC prior to departure.
- NOTE: MATLK Transition for use by aircraft filed to Jacksonville area airports only, or as assigned by ATC.

NOTE: Chart not to scale.

(CONTINUED ON FOLLOWING PAGE)

SE-3, 20 MAR 2025 to 17 APR 2025

SE-3, 20 MAR 2025 to 17 APR 2025

TBIRD SIX DEPARTURE (RNAV)



DEPARTURE ROUTE DESCRIPTION

TAKEOFF RUNWAY 10L: Climb on heading 099° to 520, then direct to cross CRRMN at or above 2500, then on track 017° to cross SMGLR at or above 4000, then on track 015° to SONNC, then on track 295° to cross AHABB at or above 6000, then on track 295° to cross BAGGR at or above 10000, thence. . . .

TAKEOFF RUNWAY 14: Climb on heading 141° to intercept course 088° to cross CRRMN at or above 2500, then on track 017° to cross SMGLR at or above 4000, then on track 015° to SONNC, then on track 295° to cross AHABB at or above 6000, then on track 295° to cross BAGGR at or above 10000, thence. . . .

TAKEOFF RUNWAY 28R: Climb on heading 279° to 520, then direct to cross CRYER at or above 2500, then on track 308° to cross UTLEY at or above 4000, then on track 342° to cross BAGGR at or above 10000, thence. . . .

TAKEOFF RUNWAY 32: Climb on heading 321° to 520, then direct BAYBE, then on track 319° to cross BAGGR at or above 10000, thence. . . .

. . . .on track 345° to TBIRD, then on assigned transition, maintain 11000.
Expect filed altitude 10 minutes after departure.

- CHEFS TRANSITION (TBIRD6.CHEFS)
- KPASA TRANSITION (TBIRD6.KPASA)
- MATLK TRANSITION (TBIRD6.MATLK)
- SHRKS TRANSITION (TBIRD6.SHRKS)
- SMELZ TRANSITION (TBIRD6.SMELZ)
- VIYAP TRANSITION (TBIRD6.VIYAP)

SE-3, 20 MAR 2025 to 17 APR 2025

SE-3, 20 MAR 2025 to 17 APR 2025