

**TOP ALTITUDE:
3000**

ATIS 124.575
GND CON 121.9
STEWART TOWER 121.0 254.4
NEW YORK DEP CON 132.75 363.1

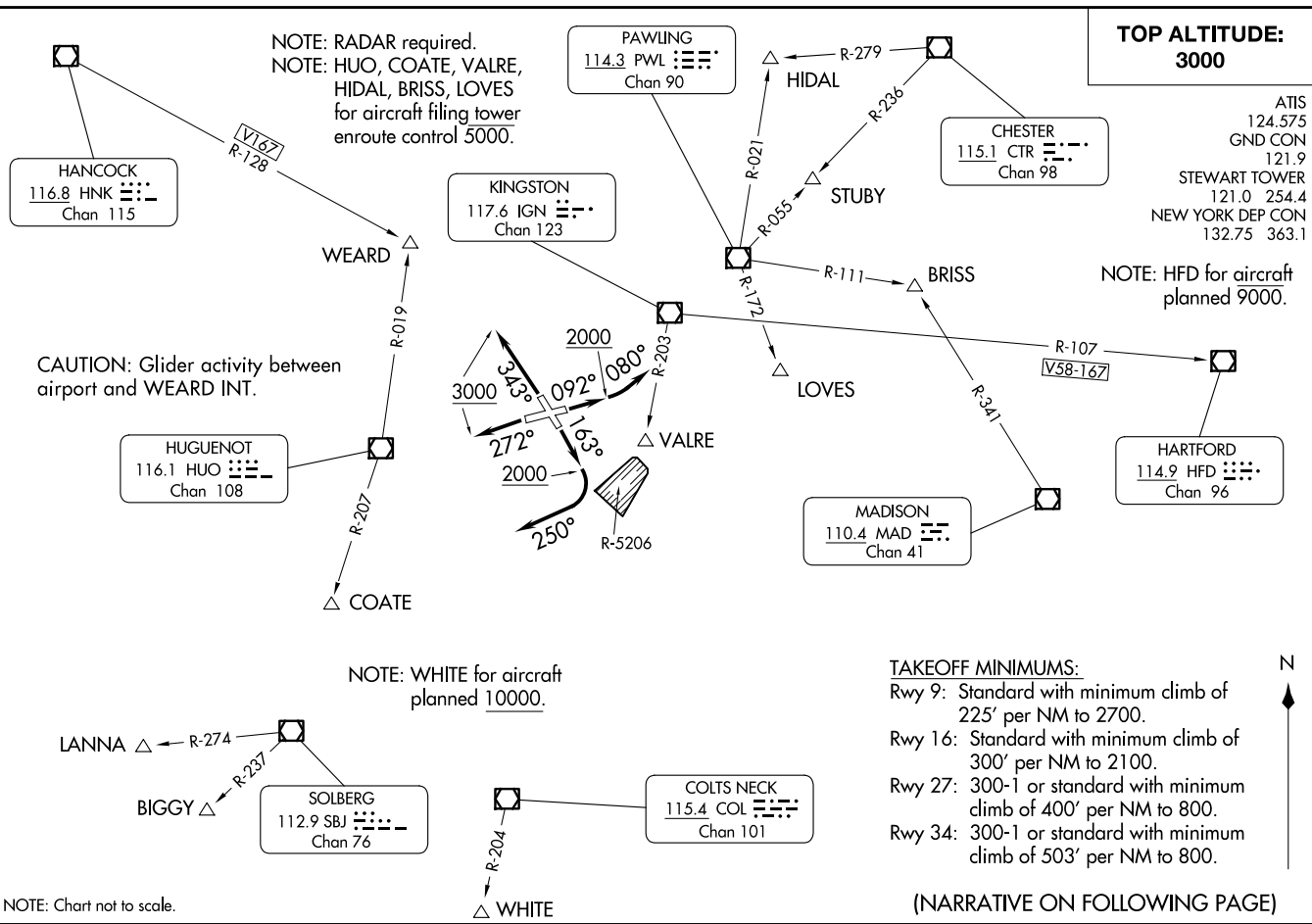
NOTE: HFD for aircraft planned 9000.

NOTE: RADAR required.
NOTE: HUO, COATE, VALRE, HIDAL, BRISS, LOVES for aircraft filing tower enroute control 5000.

TAKEOFF MINIMUMS:

- Rwy 9: Standard with minimum climb of 225' per NM to 2700.
- Rwy 16: Standard with minimum climb of 300' per NM to 2100.
- Rwy 27: 300-1 or standard with minimum climb of 400' per NM to 800.
- Rwy 34: 300-1 or standard with minimum climb of 503' per NM to 800.

(NARRATIVE ON FOLLOWING PAGE)



NOTE: Chart not to scale.



DEPARTURE ROUTE DESCRIPTION

TAKEOFF RUNWAY 9: Climb heading 092° to 2000, then turn left heading 080°, maintain 3000, thence....

TAKEOFF RUNWAY 16: Climb heading 163° to 2000, then turn right heading 250°, maintain 3000, thence....

TAKEOFF RUNWAY 27: Climb heading 272° to 3000, thence....

TAKEOFF RUNWAY 34: Climb heading 343° to 3000, thence....

...via radar vectors to assigned route/fix, expect clearance to filed altitude/flight level within ten (10) minutes after departure.

LOST COMMUNICATIONS: If radio contact is not established/lost within 2 minutes after departure, proceed on course and climb to 5000. Ten minutes after departure, climb to filed altitude/flight level.

NE-2, 20 MAR 2025 to 17 APR 2025

NE-2, 20 MAR 2025 to 17 APR 2025