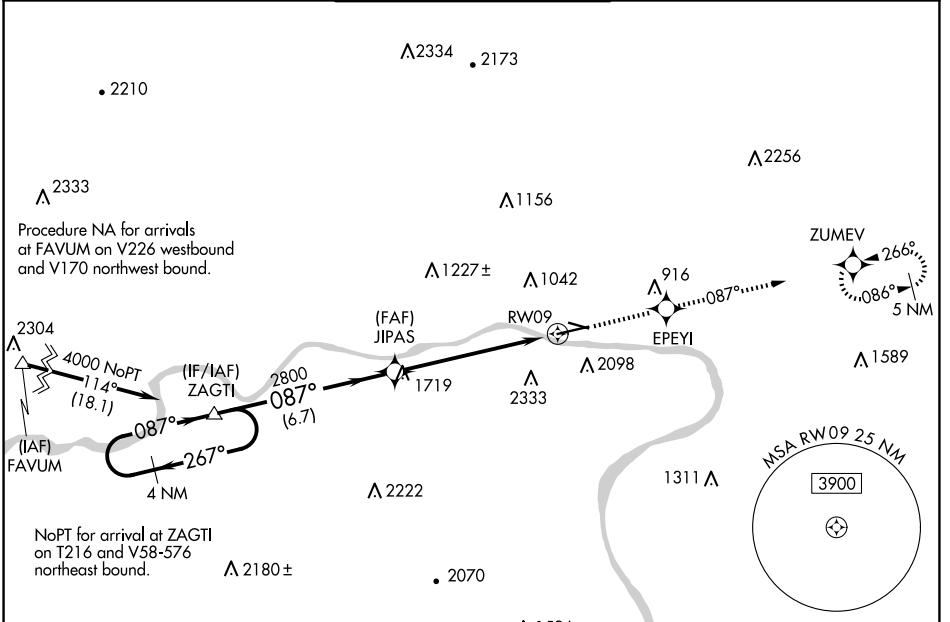


|  |                        |   |
|--|------------------------|---|
| WAAS<br>CH <b>86924</b><br><b>W09A</b> | APP CRS<br><b>087°</b> | Rwy ldg <b>6073</b><br>TDZE <b>521</b><br>Apt Elev <b>528</b> |
|--|------------------------|---|

# RNAV (GPS) RWY 9

WILLIAMSPORT RGNL (IPT)

|  |  |  |                         |                         |
|--|--|--|-------------------------|-------------------------|
| DME/DME RNP-0.3 NA.<br>Circling Rwy 12, 30 NA at night.<br>Circling NA south of Rwy 9 and southwest of Rwy 30.<br>Rwy 9 helicopter visibility reduction below 3/4 SM NA. | MISSED APPROACH: Climb to 4300 direct EPEYI and on track 087° to ZUMEV and hold, continue climb-in-hold to 4300. |  |                         |                         |
| ASOS<br><b>125.225</b>   | NEW YORK CENTER<br><b>124.9</b>  | WILLIAMSPORT TOWER ★<br><b>119.1</b> (CTAF) <b>257.8</b> | GND CON<br><b>121.9</b> | UNICOM<br><b>122.95</b> |

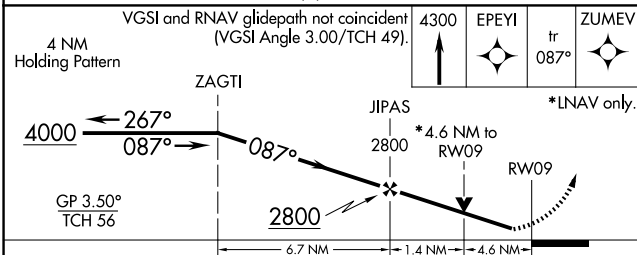


NE-4, 20 MAR 2025 to 17 APR 2025

NE-4, 20 MAR 2025 to 17 APR 2025

|          |  |          |
|----------|--|----------|
| ELEV 528 |  | TDZE 521 |
|----------|--|----------|

|                |
|----------------|
| REIL Rwy 9     |
| MIRL Rwy 12-30 |
| HIRL Rwy 9-27  |



|          |                           |                           |                         |    |
|----------|---------------------------|---------------------------|-------------------------|----|
| CATEGORY | A                         | B                         | C                       | D  |
| LPV DA   | 1036-1½ 515 (600-1½)      |                           |                         | NA |
| LNAV MDA | 2040-1¼<br>1519 (1600-1¼) | 2040-1½<br>1519 (1600-1½) | 2040-3<br>1519 (1600-3) | NA |
| CIRCLING | 2040-1¼<br>1512 (1600-1¼) | 2040-1½<br>1512 (1600-1½) | 2040-3<br>1512 (1600-3) | NA |