

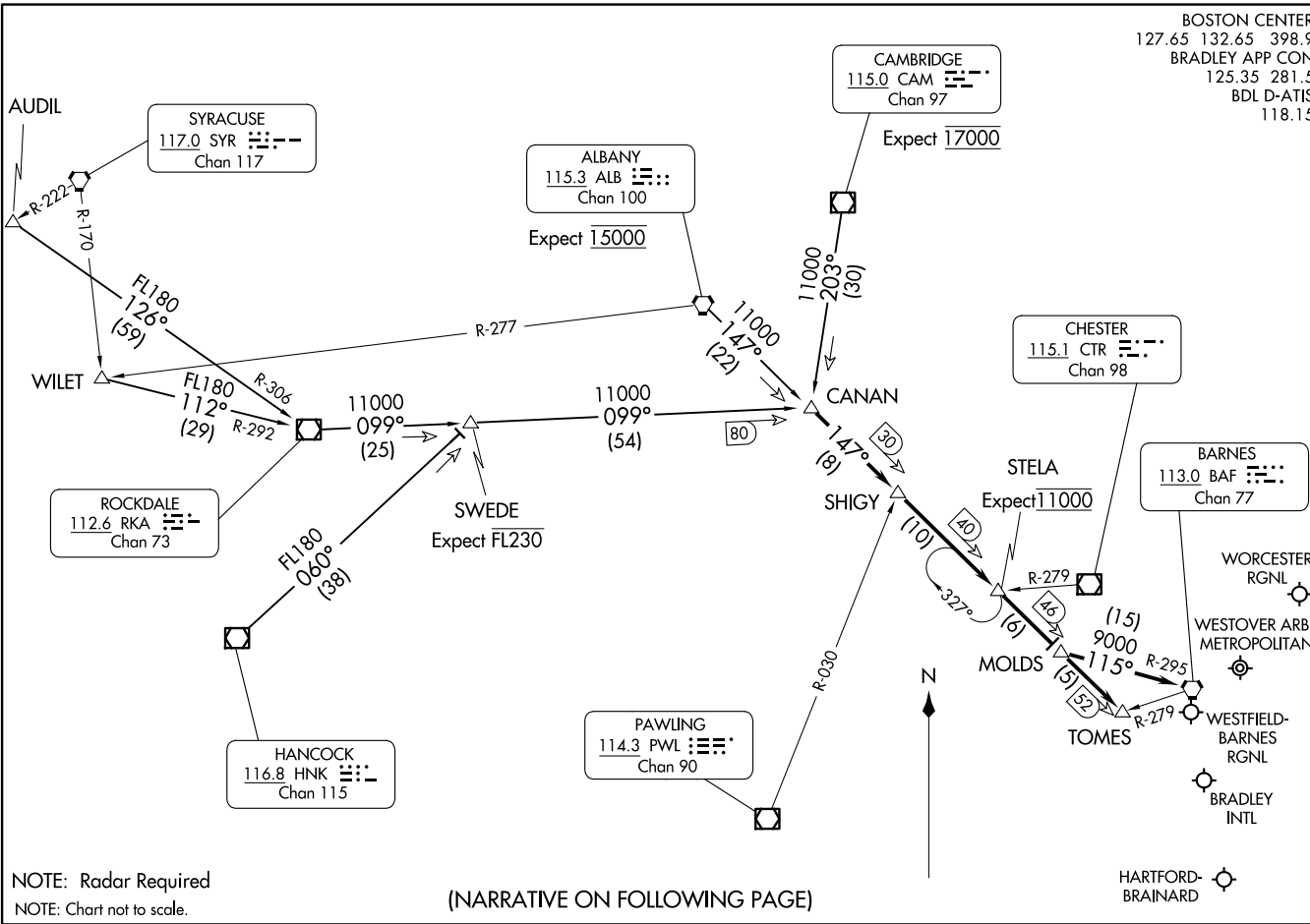
STELA ONE ARRIVAL
(STELA,STELA1) 31MAY12

(STELA,STELA1) 23334
STELA ONE ARRIVAL

BOSTON CENTER
127.65 132.65 398.9
BRADLEY APP CON
125.35 281.5
BDL D-ATIS
118.15

AL-460 (FAA)

WINDSOR LOCKS, CONNECTICUT



NOTE: Radar Required
NOTE: Chart not to scale.

(NARRATIVE ON FOLLOWING PAGE)

WINDSOR LOCKS, CONNECTICUT

STELA ONE ARRIVAL

ARRIVAL ROUTE DESCRIPTION

ALBANY TRANSITION (ALB.STELA1): From over ALB VORTAC via ALB R-147 to CANAN INT. Thence. . . .

AUDIL TRANSITION (AUDIL.STELA1): From over AUDIL INT via RKA R-306 to RKA VOR/DME, then via RKA R-099 to CANAN INT. Thence. . . .

CAMBRIDGE TRANSITION (CAM.STELA1): From over CAM VOR/DME via CAM R-203 to CANAN INT. Thence. . . .

HANCOCK TRANSITION (HНК.STELA1): From over HНК VOR/DME via HНК R-060 to SWEDE INT, then via RKA R-099 to CANAN INT. Thence. . . .

WILET TRANSITION (WILET.STELA1): From over WILET INT via RKA R-292 to RKA VOR/DME, then via RKA R-099 TO CANAN INT. Thence. . . .

KBDL and KHFD ARRIVALS: From over CANAN INT via ALB R-147 to TOMES INT. Expect radar vectors to final approach course prior to TOMES INT.

KBAF, KCEF and KORH ARRIVALS: From over CANAN INT via ALB R-147 to MOLDS INT. Then via BAF R-295 to BAF VORTAC. Expect radar vectors to final approach course prior to BAF VORTAC.

NE-1, 20 MAR 2025 to 17 APR 2025

NE-1, 20 MAR 2025 to 17 APR 2025