

LOC/DME I-YKM 110.1 Chan 38	APP CRS 274°	Rwy Idg TDZE Apt Elev 7604 1068 1099
---	------------------------	--

ILS or LOC RWY 27

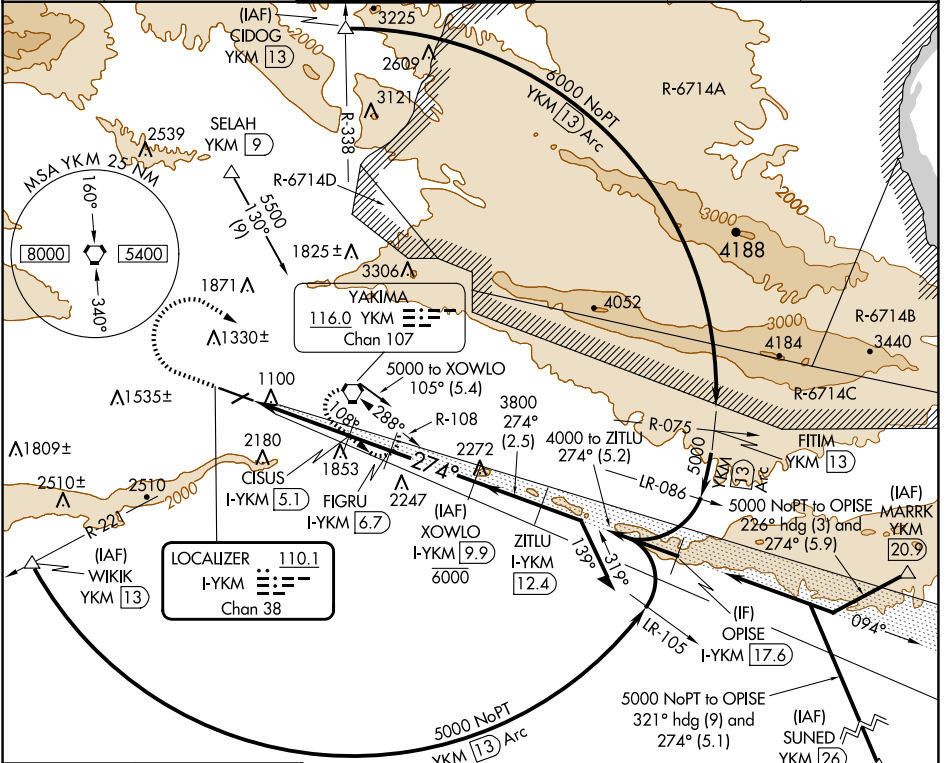
YAKIMA AIR TRML/MCALLISTER FLD (YKM)

DME required for procedure entry. DME required for LOC only.

When local altimeter setting not received, procedure NA. Circling NA south of Rwy 9 and 27. For inop ALS, increase S-LOC 27 Cats C/D visibility to 2 SM. For inop ALS, increase S-ILS 27 all Cats visibility to 1½ SM. #RVR 1800 authorized with use of FD or AP or HUD to DA.

MALSR
MISSED APPROACH: Climb to 2900 then climbing right turn to 4900 direct YKM. VORTAC and hold, continue climb-in-hold to 4900. # Missed approach requires minimum climb of 275 feet per NM to 3600.

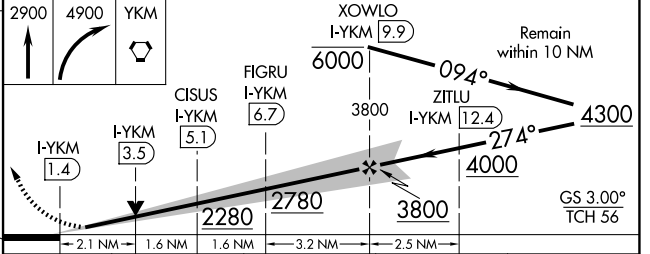
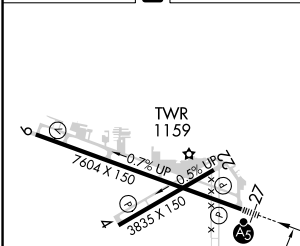
ATIS 125.25	SPOKANE APP CON * 123.8 263.15	YAKIMA TOWER * 133.25 (CTAF) 0 257.8	GND CON 121.9	CLNC DEL 121.9	UNICOM 122.95
-----------------------	--	--	-------------------------	--------------------------	-------------------------



NW-1, 20 MAR 2025 to 17 APR 2025

NW-1, 20 MAR 2025 to 17 APR 2025

ELEV 1099	D	TDZE 1068
-----------	----------	-----------



CATEGORY	A	B	C	D
S-ILS 27 #		1268/24	200 (200-½)	
S-ILS 27		1713-1½	645 (700-1½)	
S-LOC 27	1780/24	712 (700-½)	1780-1½	712 (700-1½)
C CIRCLING	1780-1	681 (700-1)	1940-2½	2280-3
			841 (900-2½)	1181 (1200-3)

MIRL Rwy 4-22
HIRL Rwy 9-27
REIL Rwy 4, 9, and 22

ILS or LOC RWY 27