

APP CRS	Rwy Idg	7604
094°	TDZE	1099
	Apf Elev	1099

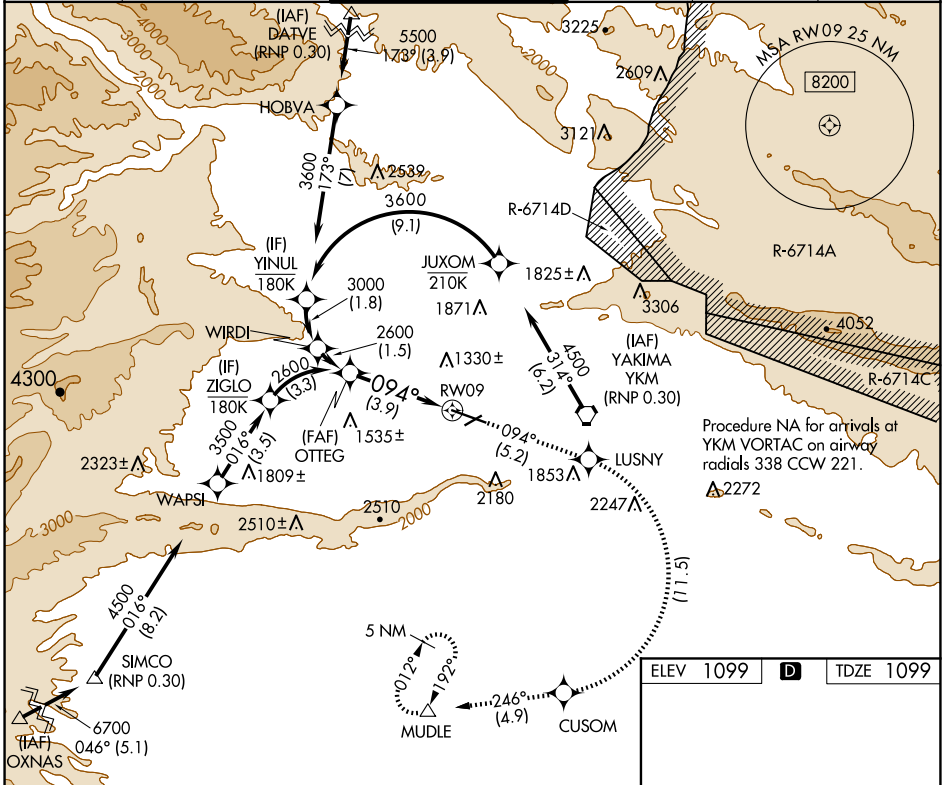
RNAV (RNP) RWY 9

YAKIMA AIR TRML/MCALLISTER FLD (YKM)

RF required. GPS required. For uncompensated Baro-VNAV systems, procedure NA below -17°C (2°F) or above 45°C (113°F). *Missed approach requires a minimum climb of 425 feet per NM to 3000.

MISSED APPROACH: Climb to 5100 on track 094° to LUSNY right turn to CUSOM and on track 246° to MUDLE and hold.

ATIS 125.25	SPOKANE APP CON* 123.8 263.15	YAKIMA TOWER* 133.25 (CTAF) 0 257.8	GND CON 121.9	CLNC DEL 121.9	UNICOM 122.95
-----------------------	---	---	-------------------------	--------------------------	-------------------------



NW-1, 20 MAR 2025 to 17 APR 2025

NW-1, 20 MAR 2025 to 17 APR 2025

OTTEG 2600		5100 ↑ tr 094°	LUSNY	CUSOM	MUDLE tr 246°
VGS1 and RNAV glidepath not coincident (VGS1 Angle 3.00/TCH 54).					
2600		094°		RW09	
GP 3.50° TCH 57		See planview for multiple IF locations.			
3.9 NM					
CATEGORY	A	B	C	D	
RNP 0.30 DA*	1473-1 374 (400-1)			NA	
RNP 0.30 DA	1934-2½ 835 (900-2½)			NA	

ELEV 1099 **D** TDZE 1099

TWR 1159

0.7% UP

7604 X 150

3835 X 150

27

AUTHORIZATION REQUIRED