

WAAS CH <b>90512</b> <b>W27A</b>	APP CRS <b>274°</b>	Rwy Idg TDZE Apt Elev	<b>7604</b> <b>1068</b> <b>1099</b>
--	------------------------	-----------------------------	---

# RNAV (GPS) X RWY 27

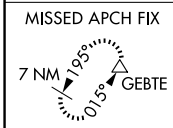
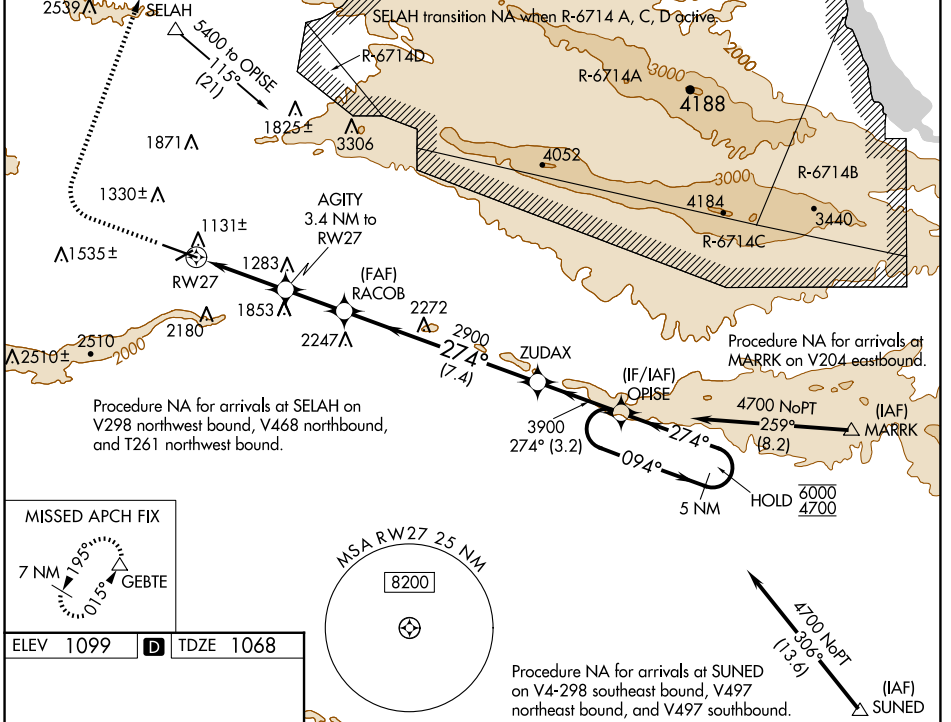
YAKIMA AIR TRML/MCALLISTER FLD (YKM)

RNP APCH.  
 ▼ Circling NA south of Rws 9 and 27.  
 ▲ For inop ALS, increase LPV all Cats visibility to 1¾ SM.  
 \*RVR 1800 authorized with use of FD or AP or HUD to DA.

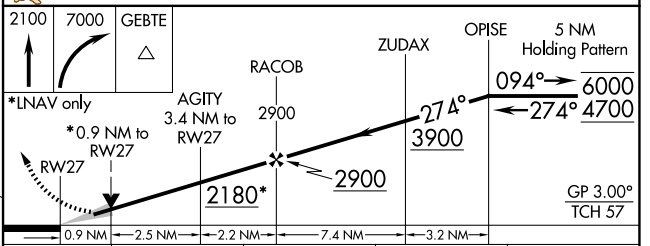
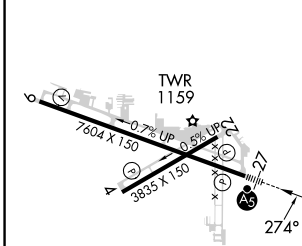
MALSRL  
 AS

MISSED APPROACH: Climb to 2100 then climbing right turn to 7000 direct GEBTE and hold. Continue climb-in-hold to 7000. \*Missed approach requires minimum climb of 300 feet per NM to 3700. #Missed approach requires minimum climb of 300 feet per NM to 4900.

ATIS <b>125.25</b>	SPOKANE APP CON* <b>123.8 263.15</b>	YAKIMA TOWER* <b>133.25 (CTAF) 257.8</b>	GND CON <b>121.9</b>	CLNC DEL <b>121.9</b>	UNICOM <b>122.95</b>
-----------------------	---	---	-------------------------	--------------------------	-------------------------



ELEV 1099	D	TDZE 1068
-----------	---	-----------



CATEGORY	A	B	C	D
LPV DA*	1268/24 200 (200-½)			
LPV DA	1668-1¼ 600 (600-1¼)			
LNAV MDA#	1400/24	332 (400-½)	1400/26	332 (400-½)
LNAV MDA	1720/24	652 (700-½)	1720-1¾	652 (700-1¾)
<input checked="" type="checkbox"/> CIRCLING	1720-1	621 (700-1)	1880-2¼	2280-3
			781 (800-2¼)	1181 (1200-3)

MIRL Rwy 4-22  
 HIRL Rwy 9-27  
 REIL Rws 4, 9, and 22

NW-1, 20 MAR 2025 to 17 APR 2025

NW-1, 20 MAR 2025 to 17 APR 2025