

VORTAC YKM 116.0 Chan 107	APP CRS 244°	Rwy Idg TDZE Apt Elev 7604 1068 1099
--	------------------------	--

VOR/DME or TACAN RWY 27

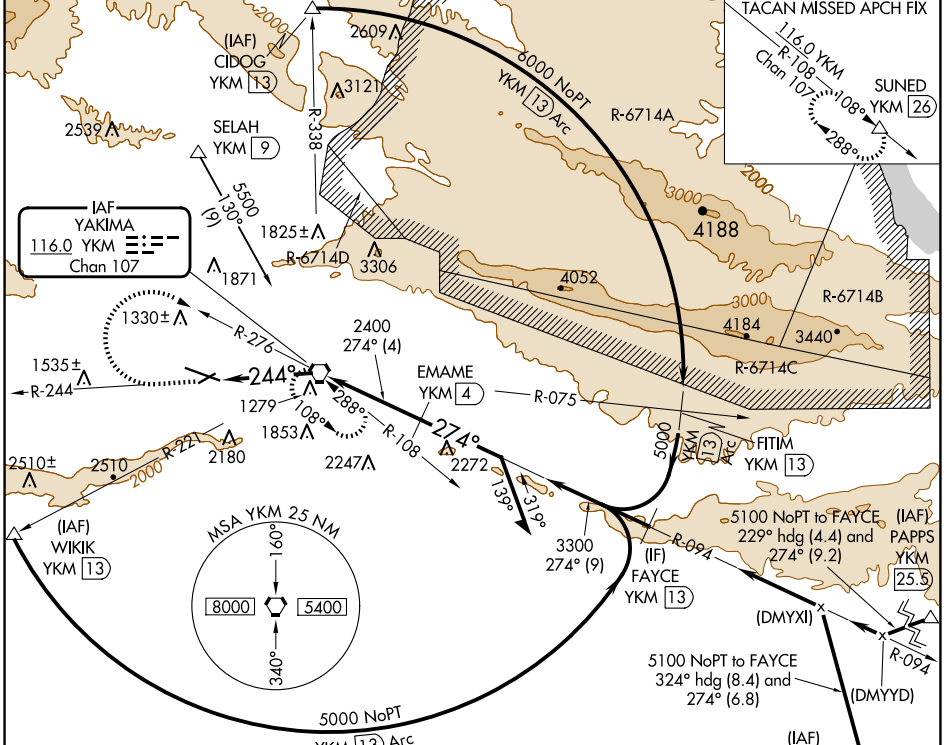
YAKIMA AIR TRML/MCALLISTER FLD (YKM)

⚠ Inoperative table does not apply. Circling NA south of Rwy 9-27. When local altimeter setting not received, procedure NA.



MISSED APPROACH: Climb to 2600 via YKM VORTAC R-244, then climbing right turn to 4600 via YKM VORTAC R-276 to YKM VORTAC and hold, continue climb-in-hold to 4600 (TACAN aircraft, continue climb to 5000 via YKM VORTAC R-108 to SUNED/YKM 26 DME and hold west, right turns, 108° inbound).

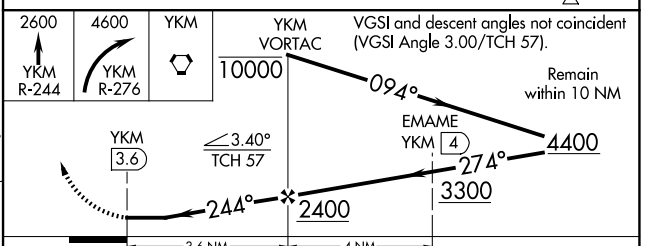
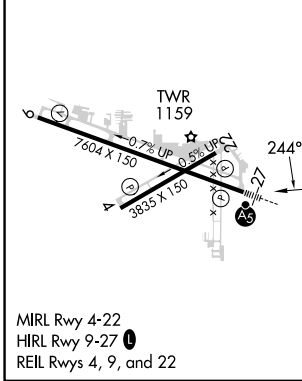
ATIS 125.25	SPOKANE APP CON* 123.8 263.15	YAKIMA TOWER* 133.25 (CTAF) 0 257.8	GND CON 121.9	CLNC DEL 121.9	UNICOM 122.95
-----------------------	---	---	-------------------------	--------------------------	-------------------------



NW-1, 20 MAR 2025 to 17 APR 2025

NW-1, 20 MAR 2025 to 17 APR 2025

ELEV 1099	D	TDZE 1068
-----------	---	-----------



CATEGORY	A	B	C	D
	S-27 2100/60 1032 (1100-1¼)	2100-1½ 1032 (1100-1½)	2100-3 1032 (1100-3)	
☑ CIRCLING	2100-1¼ 1001 (1100-1¼)	2100-1½ 1001 (1100-1½)	2100-3 1001 (1100-3)	2280-3 1181 (1200-3)