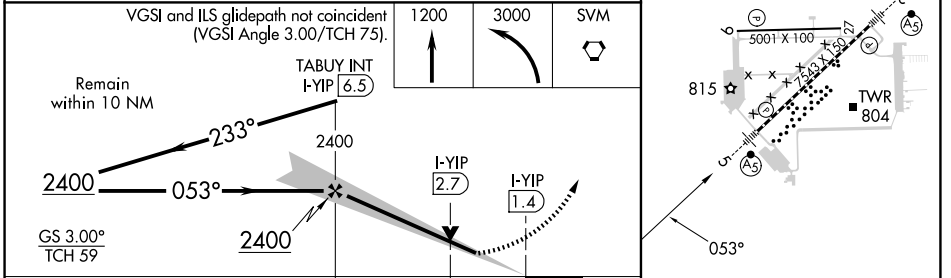
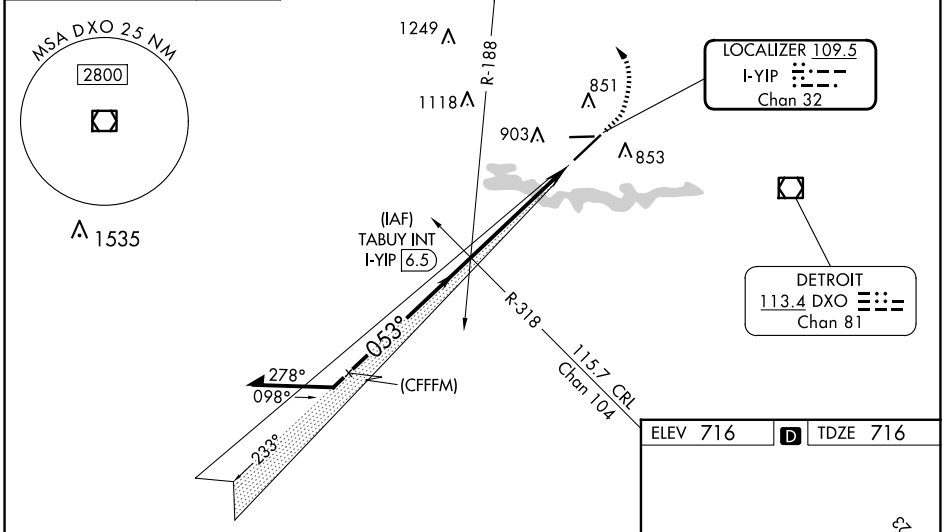
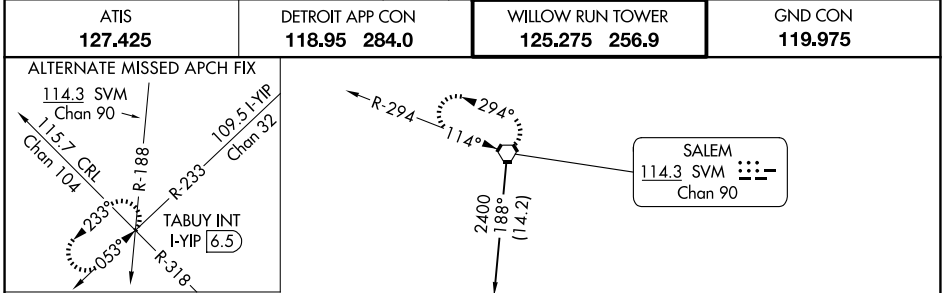


LOC/DME I-YIP 109.5 Chan 32	APP CRS 053°	Rwy Idg TDZE Apt Elev	7543 716 716
--	------------------------	-----------------------------	---

ILS or LOC RWY 5 WILLOW RUN (YIP)

<p>For inop ALS, increase S-LOC 5 Cats C/D visibility to 1 1/2 SM.</p>	<p>MALS R</p>	<p>MISSED APPROACH: Climb to 1200 then climbing left turn to 3000 direct SVM VORTAC and hold.</p>



ELEV 716 TDZE 716

815
5001 X 100
233°
804
TWR
053°

TDZ/CL Rwy 5
HIRL Rwy 5-23
MIRL Rwy 9-27

<p>CIRCLING</p>	1220-1	504 (600-1)	1220-1 1/2	504 (600-1 1/2)	1400-2 1/4	684 (700-2 1/4)	<p>FAF to MAP 5.1 NM</p> <p>Knots: 60 90 120 150 180</p> <p>Min:Sec: 5:06 3:24 2:33 2:02 1:42</p>
	<p>ATIS 127.425 DETROIT APP CON 118.95 284.0 WILLOW RUN TOWER 125.275 256.9 GND CON 119.975</p>						

CATEGORY	A	B	C	D
S-ILS 5	916/18 200 (200-1/2)			
S-LOC 5	1200/24	484 (500-1/2)	1200/50	484 (500-1)
<p>CIRCLING</p>	1220-1	504 (600-1)	1220-1 1/2	504 (600-1 1/2)
	1400-2 1/4	684 (700-2 1/4)		

EC-1, 20 MAR 2025 to 17 APR 2025

EC-1, 20 MAR 2025 to 17 APR 2025