

LIDDS THREE DEPARTURE (RNAV)

AL-467 (FAA)

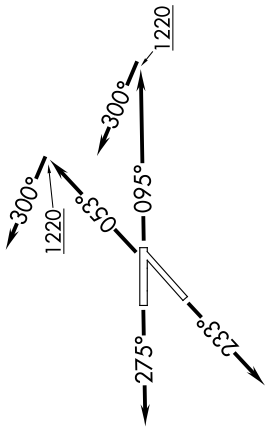
WILLOW RUN (YIP)
DETROIT, MICHIGAN

EC-1, 20 MAR 2025 to 17 APR 2025

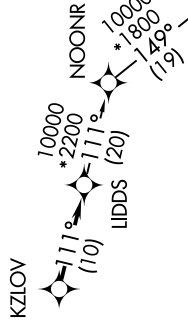
ATIS 127.425
GND CON 119.975
WILLOW RUN TOWER 125.275 256.9
DETROIT DEP CON 118.95 284.0

TAKEOFF MINIMUMS:
Rwy 23: Standard.
Rwys 5, 9: Standard with minimum climb of 500' per NM to 1220.
Rwys 27: Standard with minimum climb of 209' per NM to 1000.

RNAV 1 - DME/DME/IRU or GPS.
RADAR required.



NOTE: Turbojet departures at/above 10000, maintain 280K until advised by ATC.



DEPARTURE ROUTE DESCRIPTION

TAKEOFF RUNWAY 5: Climb on heading 053° to 1220, then on heading 300° or as assigned by ATC, for RADAR vectors to KZLOV, thence....

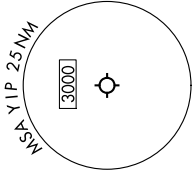
TAKEOFF RUNWAY 9: Climb on heading 095° to 1220, then on heading 300° or as assigned by ATC, for RADAR vectors to KZLOV, thence....

TAKEOFF RUNWAY 23: Climb on heading 233° or as assigned by ATC, for RADAR vectors to KZLOV, thence....

TAKEOFF RUNWAY 27: Climb on heading 275° or as assigned by ATC, for RADAR vectors to KZLOV, thence....

...on track 111° to LIDDS, then on (transition). Maintain ATC assigned altitude, expect filed altitude 10 minutes after departure.

GRIVY TRANSITION (LIDDS3.GRIVY):



NOTE: Chart not to scale.