

WAAS CH <b>78144</b>	APP CRS <b>053°</b>	Rwy Idg TDZE Apt Elev	<b>7543</b> <b>716</b> <b>716</b>
-------------------------	------------------------	-----------------------------	---

# RNAV (GPS) RWY 5

WILLOW RUN (YIP)

RNP APCH - GPS.

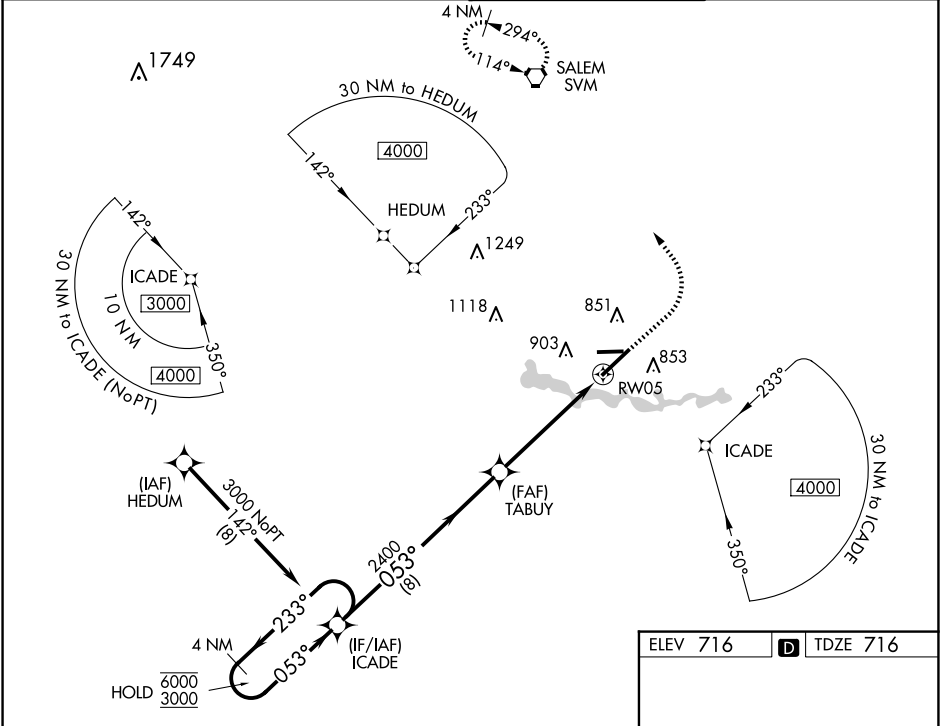
▼ For uncompensated Baro-VNAV systems, LNAV/VNAV NA below -19°C or above 54°C. For inop ALS, increase LNAV/VNAV all Cats visibility to RVR 6000, LNAV Cats C/D visibility to 1 $\frac{3}{8}$  SM.

MALSR



MISSED APPROACH: Climb to 1200 then climbing left turn to 3000 direct SVM VORTAC and hold.

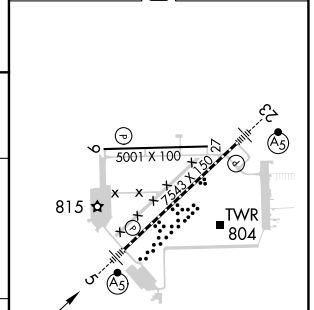
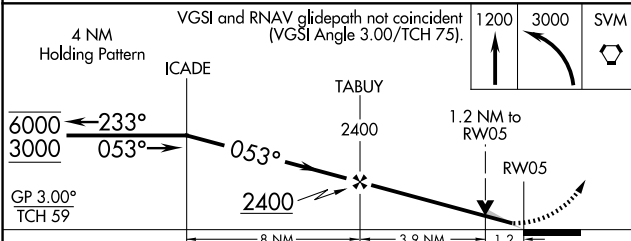
ATIS <b>127.425</b>	DETROIT APP CON <b>118.95 284.0</b>	WILLOW RUN TOWER <b>125.275 256.9</b>	GND CON <b>119.975</b>
------------------------	--	--	---------------------------



EC-1, 20 MAR 2025 to 17 APR 2025

EC-1, 20 MAR 2025 to 17 APR 2025

ELEV 716	<b>D</b> TDZE 716
----------	-------------------



CATEGORY	A	B	C	D
LPV DA	916/18 200 (200- $\frac{1}{2}$ )			
LNAV/VNAV DA	1121/40 405 (500- $\frac{3}{4}$ )			
LNAV MDA	1200/24	484 (500- $\frac{1}{2}$ )	1200/50	484 (500-1)
<b>C</b> CIRCLING	1220-1	504 (600-1)	1220-1 $\frac{1}{2}$ 504 (600-1 $\frac{1}{2}$ )	1400-2 $\frac{1}{4}$ 684 (700-2 $\frac{1}{4}$ )

TDZ/CL Rwy 5  
HIRL Rwy 5-23  
MIRL Rwy 9-27