

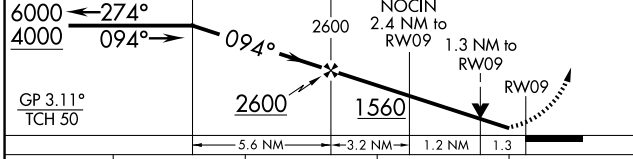
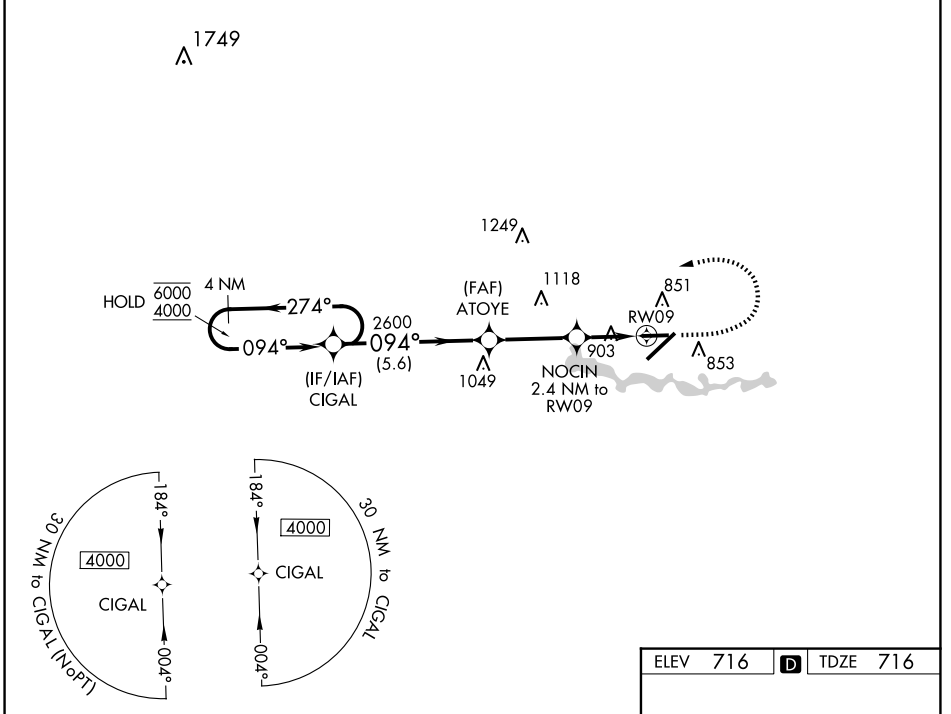
WAAS CH <b>73035</b> <b>W09A</b>	APP CRS <b>094°</b>	Rwy Idg TDZE Apt Elev	<b>5001</b> <b>716</b> <b>716</b>
--	------------------------	-----------------------------	---

# RNAV (GPS) RWY 9

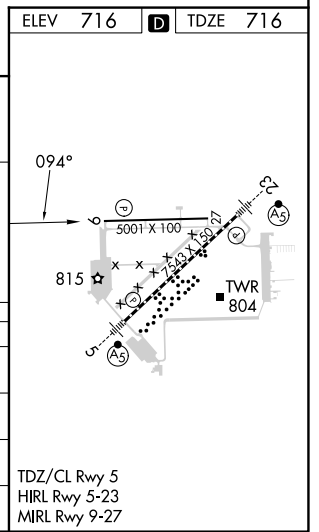
WILLOW RUN (YIP)

RNP APCH - GPS.	MISSED APPROACH: Climb to 1900 then climbing left turn to 4000 direct CIGAL and hold, continue climb-in-hold to 4000.
<p><b>▼</b> Rwy 9 helicopter visibility reduction below 3/4 SM NA. For uncompensated Baro-VNAV systems, LNAV/VNAV NA below -21°C or above 54°C.</p>	

ATIS <b>127.425</b>	DETROIT APP CON <b>118.95 284.0</b>	WILLOW RUN TOWER <b>125.275 256.9</b>	GND CON <b>119.975</b>
------------------------	--	--	---------------------------



CATEGORY	A	B	C	D
LPV DA	966-3/4		250 (300-3/4)	
LNAV/VNAV DA	1201-13/8		485 (500-13/8)	
LNAV MDA	1160-1	444 (500-1)	1160-13/8	444 (500-13/8)
<b>C</b> CIRCLING	1220-1	504 (600-1)	1220-1 1/2 504 (600-1 1/2)	1400-2 1/4 684 (700-2 1/4)



EC-1, 20 MAR 2025 to 17 APR 2025

EC-1, 20 MAR 2025 to 17 APR 2025