

LOC/DME I-FMN	APP CRS	Rwy Idg	6248
111.9	256°	TDZE	5507
Chan 56		Apt Elev	5507

ILS or LOC RWY 25

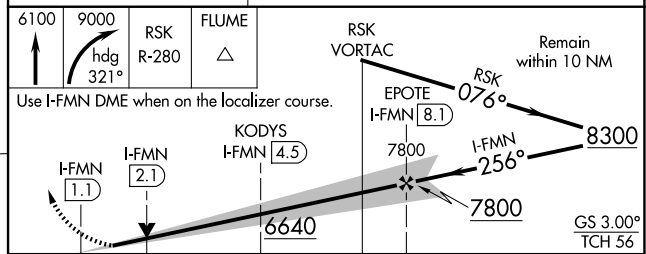
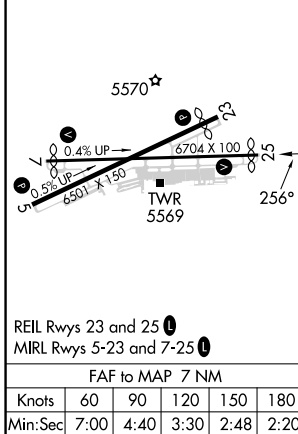
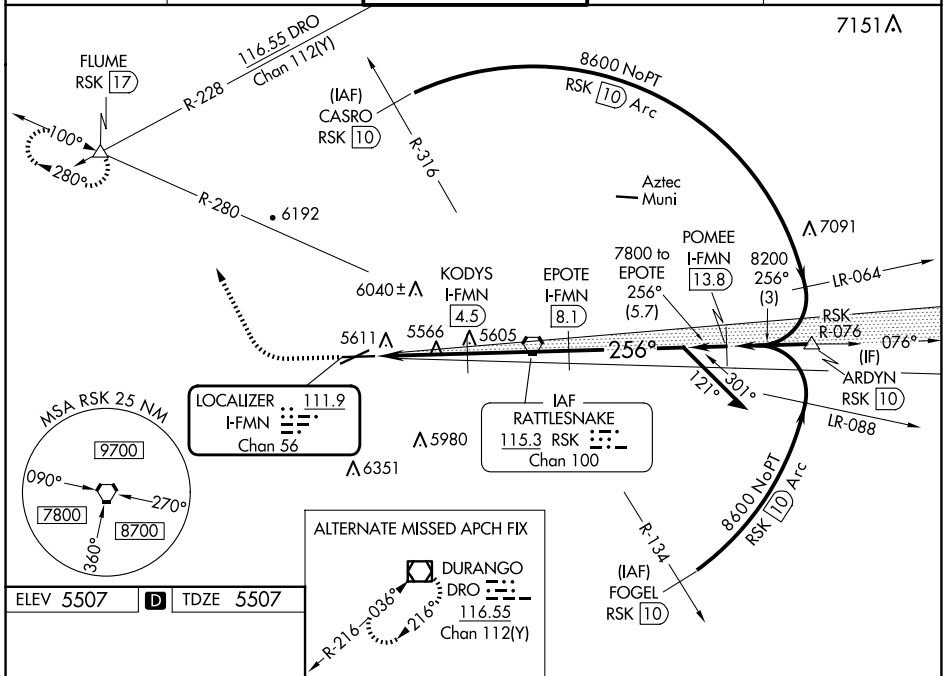
FOUR CORNERS RGNL (FMN)

DME required.

VDP N/A with Durango altimeter setting. Circling N/A for Cat D southeast of Rwy 5 and south of Rwy 25. When local altimeter setting not received, use Durango altimeter setting and increase S-ILS 25 DA to 5950 feet and all visibilities $\frac{1}{2}$ SM; increase all MDAs 260 feet and S-LOC 25 visibility Cat C/D $\frac{3}{4}$ SM, and Circling visibility Cat B $\frac{1}{4}$ SM and Cat C $\frac{1}{2}$ SM.

MISSED APPROACH: Climb to 6100 then climbing right turn to 9000 on heading 321° and on RSK VORTAC R-280 to FLUME INT and hold, continue climb-in-hold to 9000.

ATIS 127.15	DENVER CENTER 118.575 348.7	FARMINGTON TOWER* 118.9 (CTAF) 257.8	GND CON 121.7	UNICOM 122.95
-----------------------	---------------------------------------	---	-------------------------	-------------------------



CATEGORY	A	B	C	D
S-ILS 25		5707- $\frac{3}{4}$	200 (200- $\frac{3}{4}$)	
S-LOC 25		5880-1	373 (400-1)	
CIRCLING	6020-1 513 (600-1)	6140-1 633 (700-1)	6380-2 $\frac{1}{2}$ 873 (900-2 $\frac{1}{2}$)	6400-3 893 (900-3)

SW-1, 20 MAR 2025 to 17 APR 2025

SW-1, 20 MAR 2025 to 17 APR 2025