

WAAS CH <b>86210</b> <b>W05A</b>	APP CRS <b>053°</b>	Rwy Idg TDZE Apt Elev	<b>5590</b> <b>5498</b> <b>5507</b>
--	------------------------	-----------------------------	---

# RNAV (GPS) RWY 5

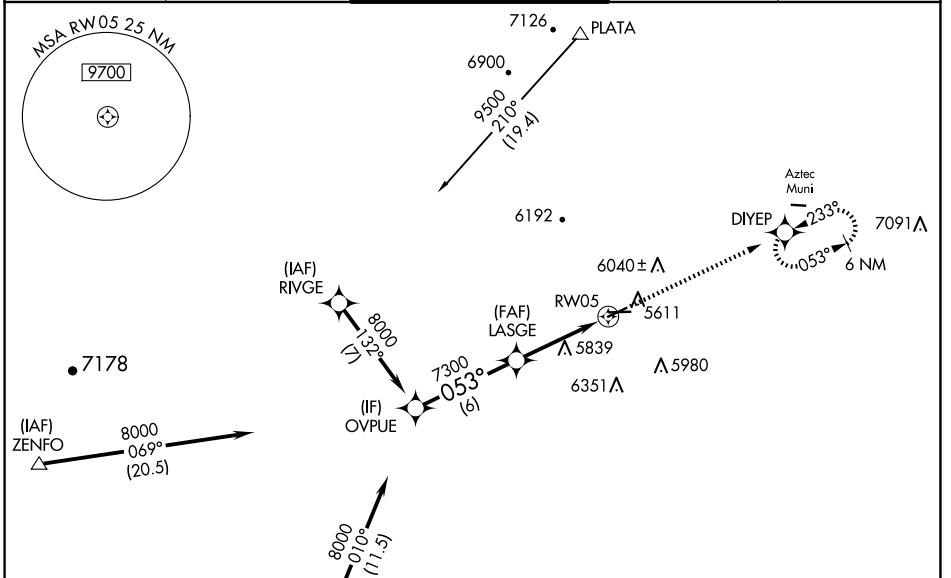
FOUR CORNERS RGNL (FMN)

RNP APCH-GPS.

Baro-VNAV and VDP NA when using Durango altimeter setting. For uncompensated Baro-VNAV systems, LNAV/VNAV NA below -25°C or above 54°C. Circling NA for Cat D southeast of Rwy 5 and south of Rwy 25. When local altimeter setting not received, use Durango altimeter setting and increase LPV DA to 5993 feet and LNAV/VNAV DA to 6163 and all visibilities  $\frac{1}{8}$  SM; increase all MDAs 260 feet and visibility LNAV Cat B/C/D and Circling Cat A/B/C  $\frac{3}{4}$  SM.

MISSED APPROACH:  
Climb to 8400 direct  
DIYEP and hold.

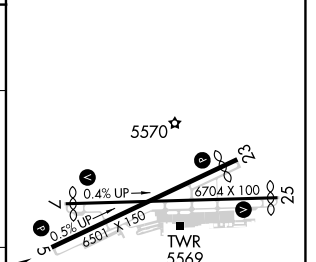
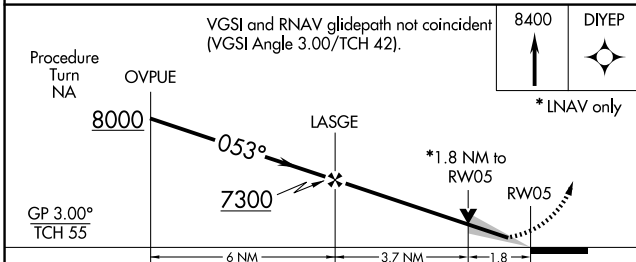
ATIS <b>127.15</b>	DENVER CENTER <b>118.575 348.7</b>	FARMINGTON TOWER* <b>118.9 (CTAF) 0 257.8</b>	GND CON <b>121.7</b>	UNICOM <b>122.95</b>
-----------------------	---------------------------------------	--	-------------------------	-------------------------



SW-1, 20 MAR 2025 to 17 APR 2025

SW-1, 20 MAR 2025 to 17 APR 2025

ELEV 5507	<b>D</b> TDZE 5498
-----------	--------------------



CATEGORY	A	B	C	D
LPV DA		5750- $\frac{3}{4}$	252 (300- $\frac{3}{4}$ )	
LNAV/ VNAV DA		5920-1 $\frac{1}{4}$	422 (500-1 $\frac{1}{4}$ )	
LNAV MDA	6100-1	602 (600-1)	6100-1 $\frac{3}{4}$	602 (600-1 $\frac{3}{4}$ )
CIRCLING	6100-1 593 (600-1)	6180-1 673 (700-1)	6380-2 $\frac{1}{2}$ 873 (900-2 $\frac{1}{2}$ )	6460-3 953 (1000-3)

REIL Rwy 23 and 25 **1**  
MIRL Rwy 5-23 and 7-25 **1**