

| | | | |
|--|------------------------|-----------------------------|---|
| WAAS CH 90110 W07A | APP CRS 076° | Rwy Idg TDZE Apt Elev | 6248 5502 5507 |
|--|------------------------|-----------------------------|---|

RNAV (GPS) RWY 7

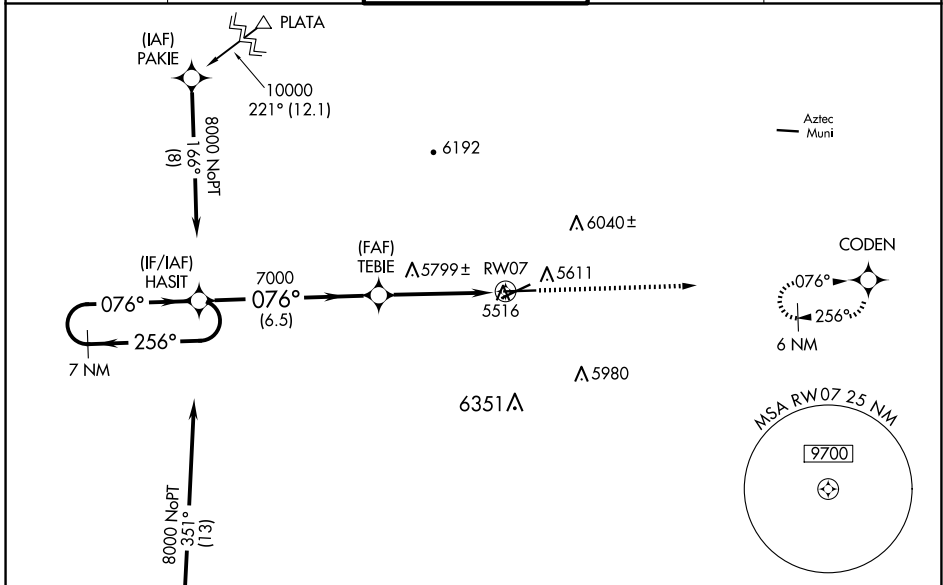
FOUR CORNERS RGNL (FMN)

RNP APCH-GPS.

⚠ Baro-VNAV and VDP NA when using Durango altimeter setting. For uncompensated Baro-VNAV systems, LNAV/VNAV NA below -25°C or above 54°C. Circling NA for Cat D southeast of Rwy 5 and south of Rwy 25. When local altimeter setting not received, use Durango altimeter setting and increase LPV DA to 6003 feet and LNAV/VNAV DA to 6223 and all visibilities 5/8 SM; increase all MDAs 260 feet and visibility LNAV Cats B/C/D and Circling Cats A/B/C 7/8 SM.

MISSED APPROACH:
Climb to 8300 direct
CODEN and hold.

| | | | | |
|-----------------------|---------------------------------------|---|-------------------------|-------------------------|
| ATIS 127.15 | DENVER CENTER 118.575 348.7 | FARMINGTON TOWER* 118.9 (CTAF) 257.8 | GND CON 121.7 | UNICOM 122.95 |
|-----------------------|---------------------------------------|---|-------------------------|-------------------------|

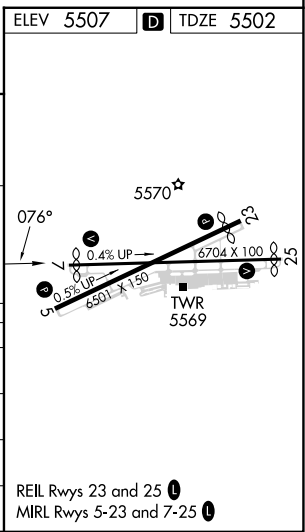
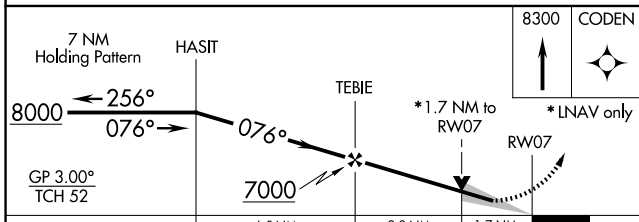


SW-1, 20 MAR 2025 to 17 APR 2025

SW-1, 20 MAR 2025 to 17 APR 2025

ELEV 5507 **D** TDZE 5502

Procedure NA for arrivals at DERMA via V95 southwest bound.



| CATEGORY | A | B | C | D |
|--------------|-----------------------|-----------------------|-------------------------------|------------------------|
| LPV DA | | 5760-3/4 | 258 (300-3/4) | |
| LNAV/VNAV DA | | 5980-1 3/8 | 478 (500-1 3/8) | |
| LNAV MDA | 6060-1 | 558 (600-1) | 6060-1 5/8 | 558 (600-1 5/8) |
| CIRCLING | 6100-1 593 (600-1) | 6180-1 673 (700-1) | 6380-2 1/2 873 (900-2 1/2) | 6460-3 953 (1000-3) |