

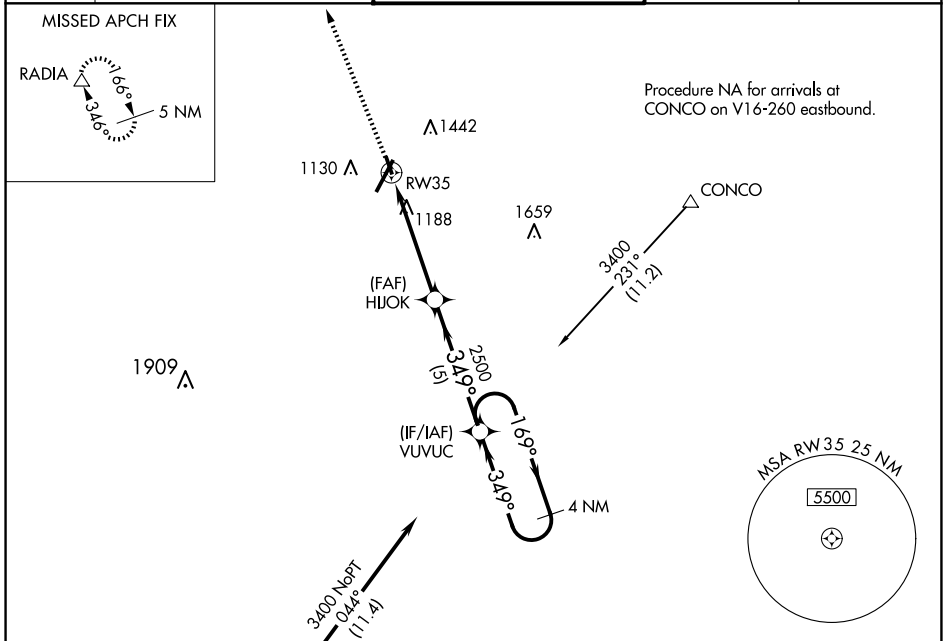
WAAS CH 93634 W35A	APP CRS 349°	Rwy Idg TDZE Apt Elev	3386 933 938
--	------------------------	-----------------------------	---

RNAV (GPS) RWY 35

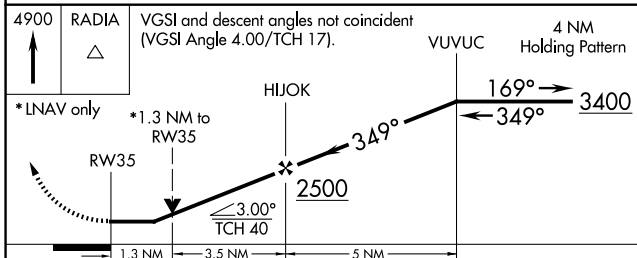
LYNCHBURG RGNL/PRESTON GLENN FLD (LYH)

RNP APCH.	<p>▼ Circling Rwy 17 NA at night. ▲ Rwy 35 helicopter visibility reduction below ¾ SM NA.</p>	MISSED APPROACH: Climb to 4900 direct RADIA and hold.
-----------	---	---

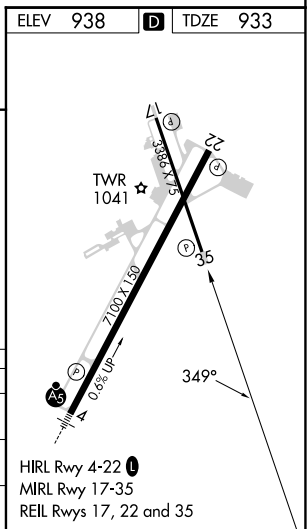
ATIS 119.8	ROANOKE APP CON 135.0 254.325	LYNCHBURG TOWER ★ 127.65 (CTAF) 257.8	GND CON 121.9	UNICOM 122.95
----------------------	---	---	-------------------------	-------------------------



Procedure NA for arrivals at SYCAM on V469 southbound.



4900	RADIA	VGS1 and descent angles not coincident (VGS1 Angle 4.00/TCH 17).		4 NM Holding Pattern
*LNAV only		RWY 35	HIJOK	VUVUC
		1.3 NM	3.5 NM	5 NM
CATEGORY	A	B	C	D
LP MDA	1480-1	547 (600-1)		NA
LNAV MDA	1500-1	567 (600-1)		NA
☑ CIRCLING	1660-1 722 (800-1)	1780-1 ¼ 842 (900-1 ¼)		NA



NE-3, 20 MAR 2025 to 17 APR 2025

NE-3, 20 MAR 2025 to 17 APR 2025