

VOR/DME LYH	Rwy Idg	7100
109.2	TDZE	938
Chan 29	Apt Elev	938

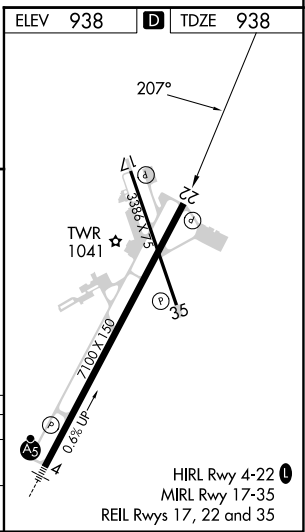
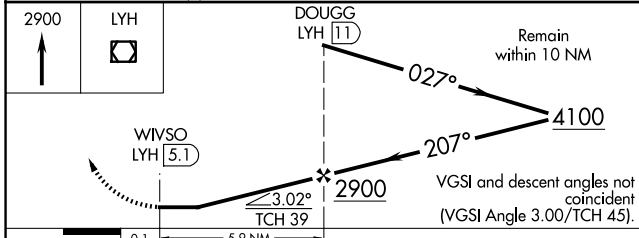
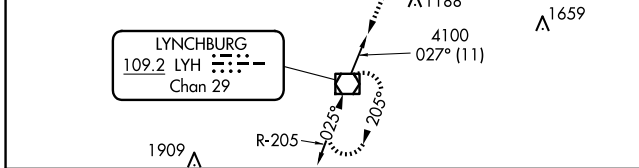
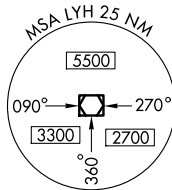
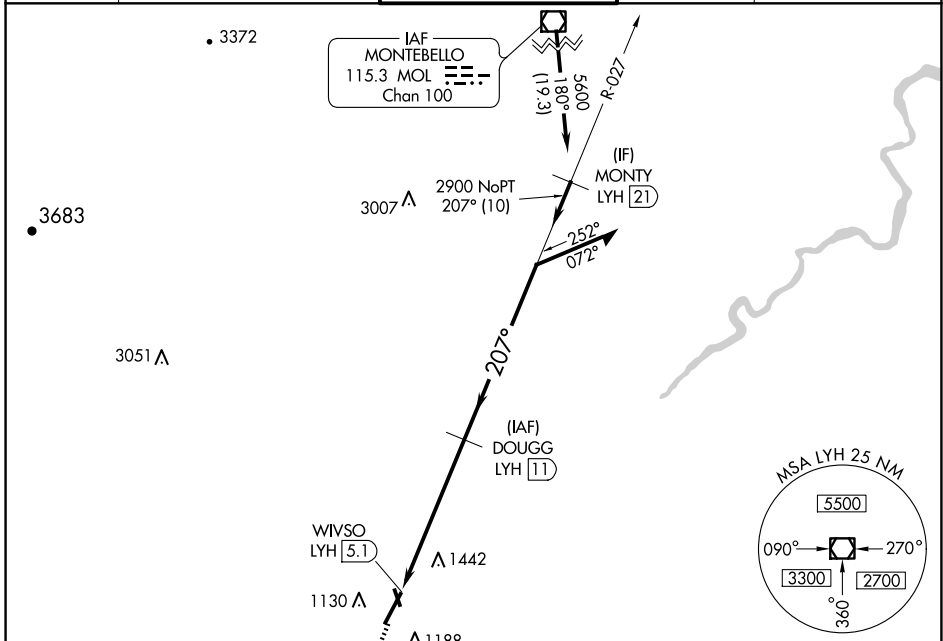
APP CRS
207°

VOR RWY 22

LYNCHBURG RGNL/PRESTON GLENN FLD (LYH)

DME required.		LYNCHBURG TOWER ★ 127.65 (CTAF) 0 257.8		GND CON 121.9	UNICOM 122.95
<p>▼ Rwy 22 helicopter visibility reduction below 3/4 SM NA. ▲ Circling Rwy 17 NA at night.</p>		<p>MISSED APPROACH: Climb to 2900 direct LYH VOR/DME and hold.</p>			

ATIS 119.8	ROANOKE APP CON 135.0 254,325	LYNCHBURG TOWER ★ 127.65 (CTAF) 0 257.8	GND CON 121.9	UNICOM 122.95
----------------------	---	--	-------------------------	-------------------------



CATEGORY	A	B	C	D
	1740-1 802 (900-1)	1740-1 1/4 802 (900-1 1/4)	1740-2 1/4 802 (900-2 1/4)	1740-2 1/2 802 (900-2 1/2)
☐ CIRCLING	1740-1 802 (900-1)	1780-1 1/4 842 (900-1 1/4)	1800-2 1/2 862 (900-2 1/2)	1800-2 3/4 862 (900-2 3/4)

VOR RWY 22

NE-3, 20 MAR 2025 to 17 APR 2025

NE-3, 20 MAR 2025 to 17 APR 2025