

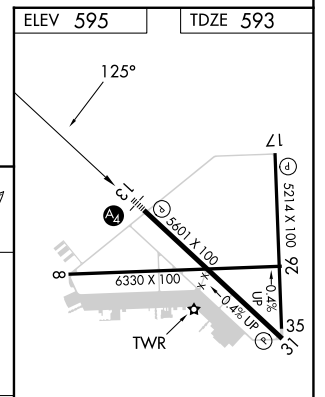
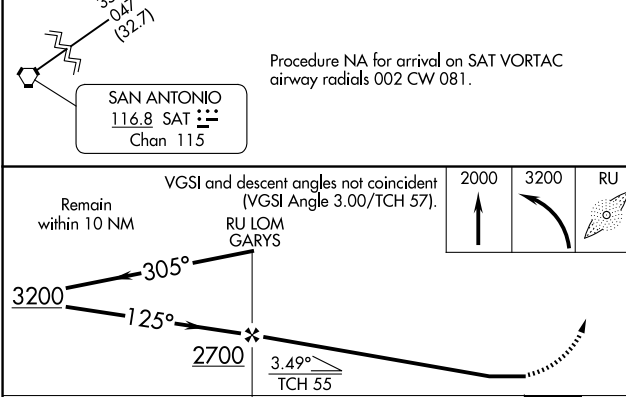
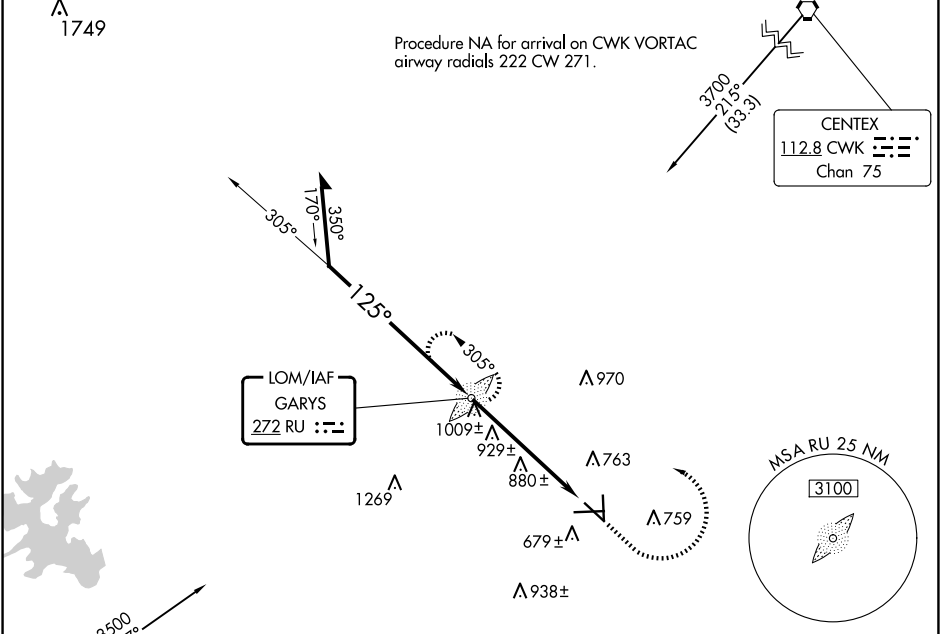
LOM RU	APP CRS	Rwy Idg TDZE	5601
272	125°	Apt Elev	593
			595

NDB RWY 13

SAN MARCOS RGNL (HYI)

		MALS 	MISSED APPROACH: Climb to 2000 then climbing left turn to 3200 direct GARYS LOM and hold.		
--	--	----------	---	--	--

ATIS 120.825	AUSTIN APP CON 119.0 370.85	SAN MARCOS TOWER* 126.825 (CTAF)	GND CON 120.125	CLNC DEL 120.125	CLNC DEL 121.35 (when twr closed)
------------------------	---------------------------------------	--	---------------------------	----------------------------	--



CATEGORY	A	B	C	D	MIRL Rwy 8-26, 13-31, and 17-35
S-13	1240-3/4	647 (700-3/4)	1240-1 5/8	647 (700-1 5/8)	FAF to MAP 5.5 NM
CIRCLING	1240-1	645 (700-1)	1240-1 7/8	1320-2 1/4	725 (800-2 1/4)
					Knots 60 90 120 150 180
					Min:Sec 5:30 3:40 2:45 2:12 1:50

SC-3, 20 MAR 2025 to 17 APR 2025

SC-3, 20 MAR 2025 to 17 APR 2025