

WAAS CH 77832 W17A	APP CRS 171°	Rwy Idg 5214 TDZE 595 Apt Elev 595
--	------------------------	---

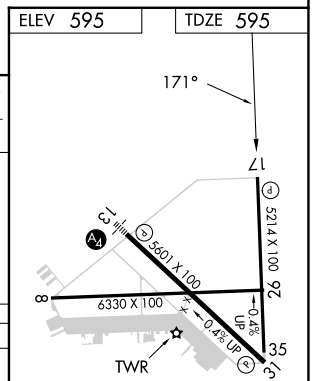
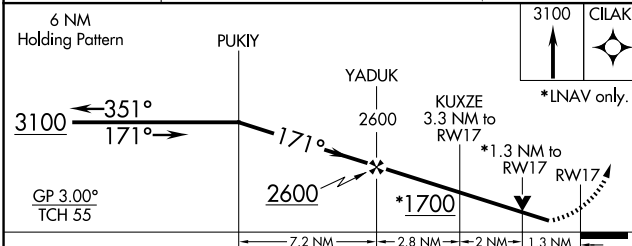
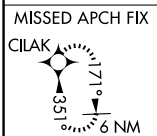
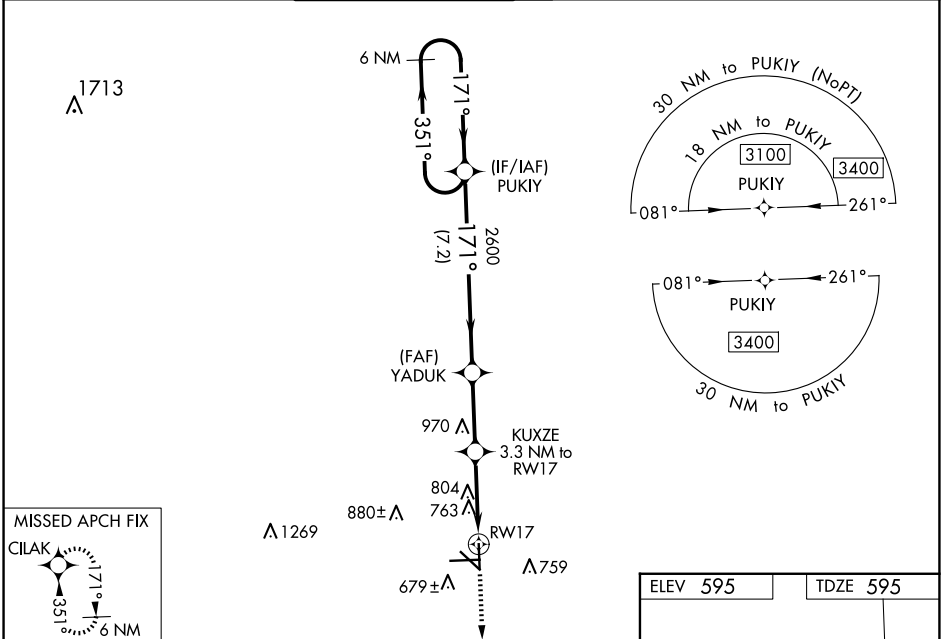
RNAV (GPS) RWY 17

SAN MARCOS RGNL (HYI)

⚠ Baro-VNAV NA when using New Braunfels altimeter setting. For uncompensated Baro-VNAV systems, LNAV/VNAV NA below -16°C (3°F) or above 54°C (130°F). When local altimeter setting not received, use New Braunfels altimeter setting and increase all DA 43 feet and all MDA 60 feet; increase LPV all Cats and Circling Cat C/D visibility ¼ mile; increase LNAV/VNAV all Cats and LNAV Cat C/D/E visibility ½ mile. Circling NA for Cat E SW of Rwy 13-31. DME/DME RNP-0.3 NA. VDP NA with New Braunfels altimeter setting. Helicopter visibility reduction below ¾ SM NA.

MISSED APPROACH:
Climb to 3100 direct CILAK and hold.

ATIS 120.825	AUSTIN APP CON 119.0 370.85	SAN MARCOS TOWER★ 126.825 (CTAF) 0	GND CON 120.125	CLNC DEL 120.125	CLNC DEL 121.35 (when twr closed)
------------------------	---------------------------------------	---	---------------------------	----------------------------	--



CATEGORY	A	B	C	D	E
LPV DA	960-1 1/8		365 (400-1 1/8)		
LNAV/VNAV DA	1052-1 1/2		457 (500-1 1/2)		
LNAV MDA	1060-1	465 (500-1)	1060-1 3/8	465 (500-1 3/8)	
CIRCLING	1080-1 485 (500-1)	1120-1 525 (600-1)	1240-1 1/4 645 (700-1 3/4)	1320-2 1/4 725 (800-2 1/4)	1340-2 3/4 745 (800-2 3/4)

MIRL Rwy 8-26, 13-31, and 17-35 **0**

SC-3, 20 MAR 2025 to 17 APR 2025

SC-3, 20 MAR 2025 to 17 APR 2025