

WAAS CH 72932 W08A	APP CRS 081°	Rwy Idg 6330 TDZE 589 Apt Elev 595
--	------------------------	---

RNAV (GPS) RWY 8

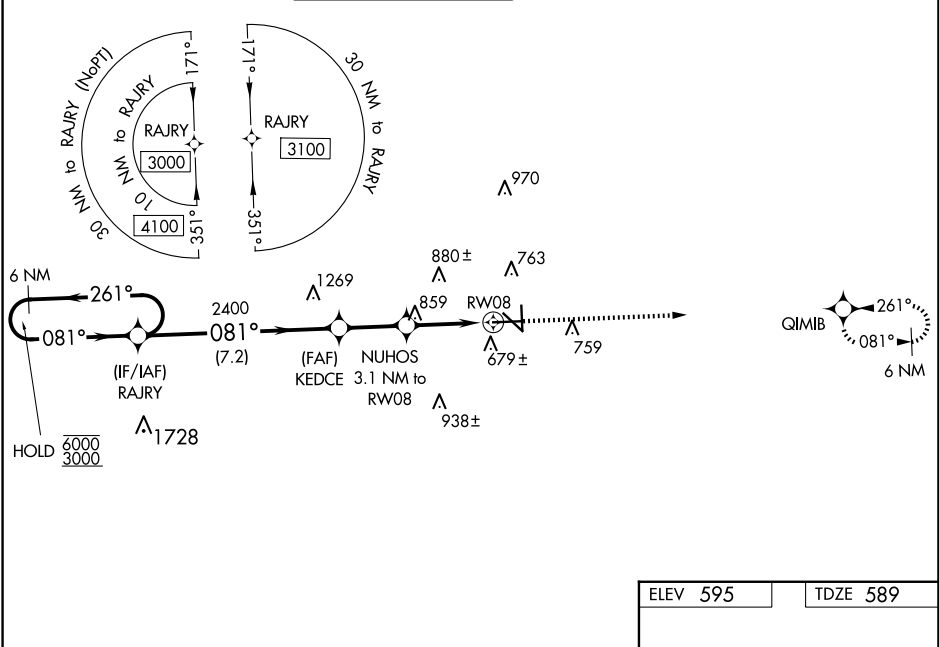
SAN MARCOS RGNL (HYI)

RNP APCH.

⚠ Circling NA for Cat E SW of Rwy 13-31; Rwy 8 helicopter visibility reduction below 3/4 SM NA. Baro-VNAV NA when using New Braunfels altimeter setting. For uncompensated Baro-VNAV systems, LNAV/VNAV NA below -16°C or above 54°C. VDP NA with New Braunfels altimeter setting. When local altimeter setting not received, use New Braunfels altimeter setting and increase LPV DA to 882, LNAV/VNAV DA to 953 and increase all MDA 60 feet; increase LNAV Cat C/D/E and Circling Cat C/D visibility 1/4 SM.

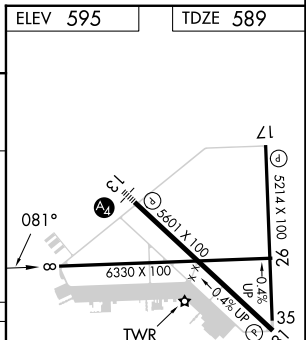
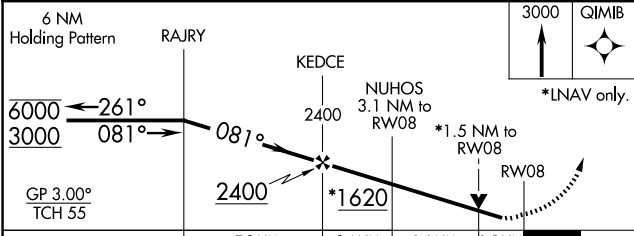
MISSED APPROACH:
Climb to 3000 direct QIMIB and hold.

ATIS 120.825	AUSTIN APP CON 119.0 370.85	SAN MARCOS TOWER★ 126.825 (CTAF) 0	GND CON 120.125	CLNC DEL 120.125	CLNC DEL 121.35 (when twr closed)
------------------------	---------------------------------------	---	---------------------------	----------------------------	--



SC-3, 20 MAR 2025 to 17 APR 2025

SC-3, 20 MAR 2025 to 17 APR 2025



CATEGORY	A	B	C	D	E
LPV DA		839-1	250 (300-1)		
LNAV/VNAV DA		910-1	321 (400-1)		
LNAV MDA	1120-1	531 (600-1)	1120-1½	531 (600-1½)	
C CIRCLING	1120-1	525 (600-1)	1240-1¾ 645 (700-1¾)	1320-2¼ 725 (800-2¼)	1340-2¾ 745 (800-2¾)

MIRL Rwy 8-26, 13-31, and 17-35 **0**