

| | | |
|--|------------------------|---|
| WAAS CH 90421 W36A | APP CRS 004° | Rwy Idg 5497 TDZE 384 Apt Elev 422 |
|--|------------------------|---|

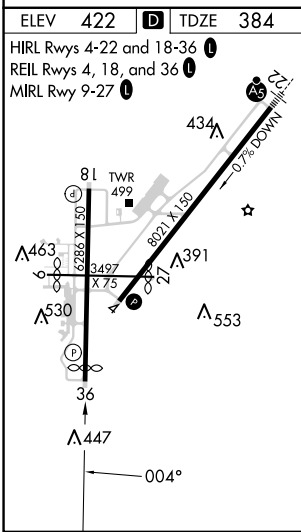
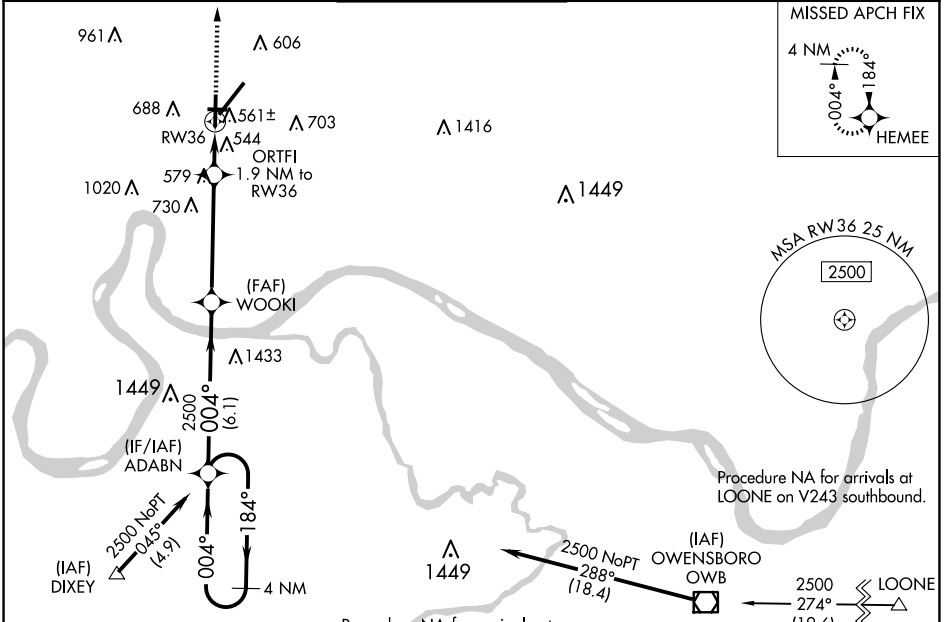
RNAV (GPS) RWY 36

EVANSVILLE RGNL (EVV)

ASR For uncompensated Baro-VNAV systems, LNAV/VNAV NA below -15°C (5°F) or above 54°C (130°F). DME/DME RNP-0.3 NA. Circling Rwy 9 NA at night. Helicopter visibility reduction below 3/4 SM NA.

MISSED APPROACH: Climb to 2500 direct HEMEE and hold.

| | | | | | |
|----------------------|--|---|-------------------------|--------------------------|-------------------------|
| ATIS 120.2 | EVANSVILLE APP CON ★ 124.025 290.9 | EVANSVILLE TOWER ★ 118.7 (CTAF) 257.8 | GND CON 121.9 | CLNC DEL 126.6 | UNICOM 122.95 |
|----------------------|--|---|-------------------------|--------------------------|-------------------------|



Procedure NA for arrivals at DIXEY on V7-52 southeast bound.

Procedure NA for arrivals at LOONE on V243 southbound.

| | | | | | |
|----------------------|-------------|--|-----------------|-----------------|------------|
| 4 NM Holding Pattern | | VGSi and RNAV glidepath not coincident (VGSi Angle 3.00/TCH 29). | | 2500 | HEMEE |
| ADABN | | WOOKI | ORTFI | 1.9 NM to RW36 | *INAV only |
| 2500 ← 184° | | 004° → | 2500 | *1.3 NM to RW36 | |
| GP 3.00° | | 6.1 NM | | 4.6 NM | 0.6 NM |
| TCH 55 | | 1.3 | | | |
| CATEGORY | A | B | C | D | |
| LPV DA | 634-3/4 | | 250 (300-3/4) | | |
| LNAV/VNAV DA | 891-13/4 | | 507 (500-13/4) | | |
| LNAV MDA | 820-1 | 436 (500-1) | 820-1 1/4 | 436 (500-1 1/4) | |
| C CIRCLING | 920-1 | 1040-1 | 1040-1 3/4 | 1040-2 | |
| | 498 (500-1) | 618 (700-1) | 618 (700-1 3/4) | 618 (700-2) | |

EC-2, 20 MAR 2025 to 17 APR 2025

EC-2, 20 MAR 2025 to 17 APR 2025