

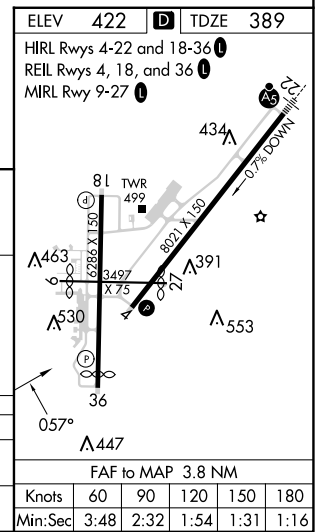
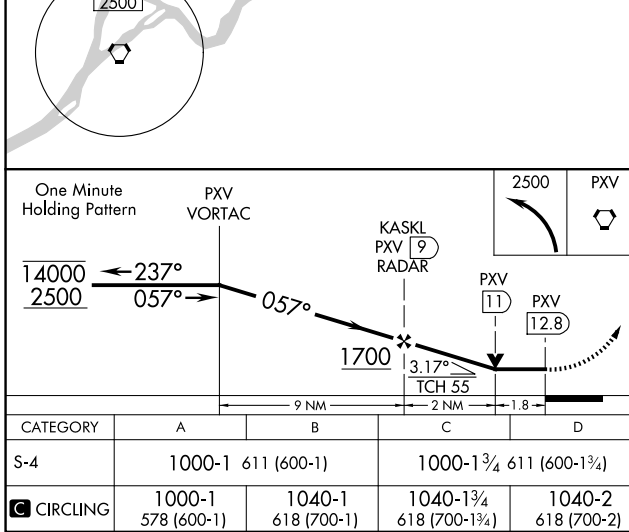
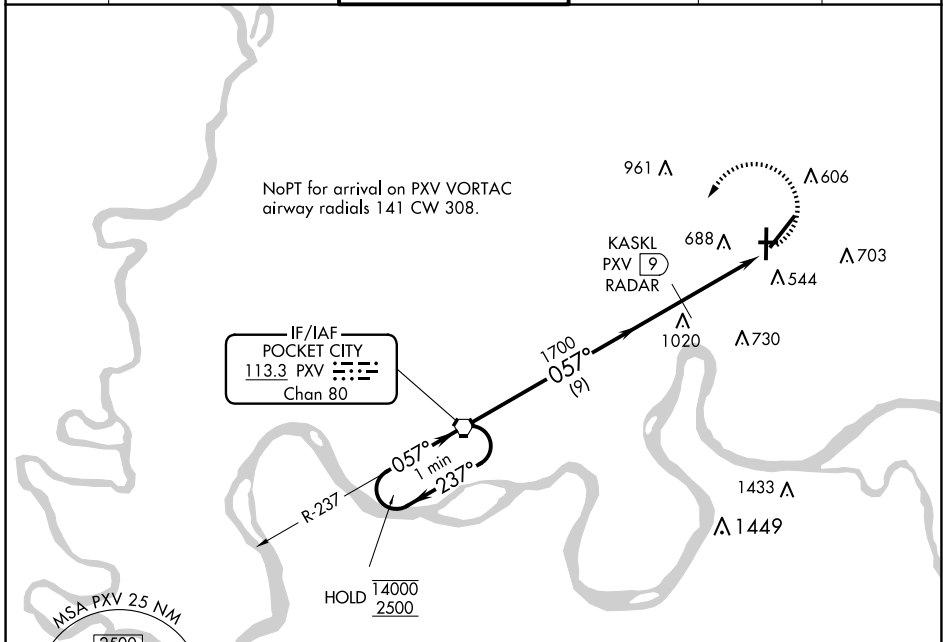
VORTAC PXV 113.3 Chan 80	APP CRS 057°	Rwy Idg TDZE Apt Elev 8021 389 422
--	------------------------	--

VOR RWY 4

EVANSVILLE RGNL (EVV)

DME or RADAR required.		MISSED APPROACH: Climbing left turn to 2500 direct PXV VORTAC and hold.		
<p>▼ RWY 4 helicopter visibility reduction below 3/4 SM NA. ASR Circling Rwy 9 NA at night.</p>				

ATIS 120.2	EVANSVILLE APP CON ★ 124.025 290.9	EVANSVILLE TOWER ★ 118.7 (CTAF) 257.8	GND CON 121.9	CLNC DEL 126.6	UNICOM 122.95
----------------------	--	---	-------------------------	--------------------------	-------------------------



EVANSVILLE, INDIANA Amdt 7A 13SEP18	38°02'N-87°32'W	EVANSVILLE RGNL (EVV) VOR RWY 4
--	-----------------	---

EC-2, 20 MAR 2025 to 17 APR 2025

EC-2, 20 MAR 2025 to 17 APR 2025

CATEGORY	A	B	C	D
S-4	1000-1 611 (600-1)	1000-1 611 (600-1)	1000-1 3/4 611 (600-1 3/4)	1000-1 3/4 611 (600-1 3/4)
CIRCLING	1000-1 578 (600-1)	1040-1 618 (700-1)	1040-1 3/4 618 (700-1 3/4)	1040-2 618 (700-2)

FAF to MAP 3.8 NM					
Knots	60	90	120	150	180
Min:Sec	3:48	2:32	1:54	1:31	1:16