

APP CRS	Rwy Idg	4750
297°	TDZE	1439
	Apt Elev	1442

RNAV (RNP) RWY 30

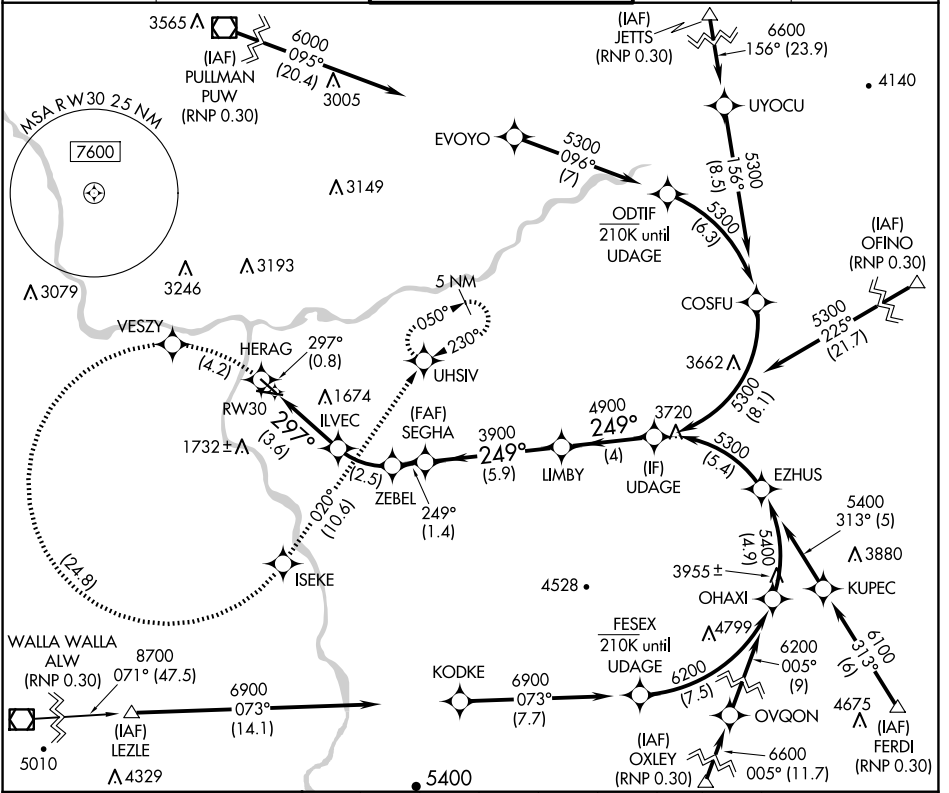
LEWISTON/NEZ PERCE COUNTY (LWS)

RNP AR APCH-GPS.

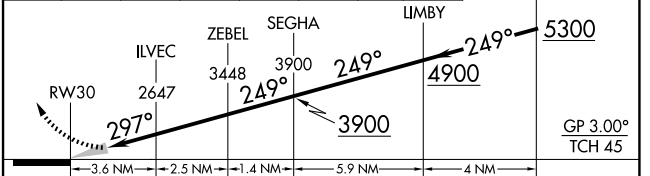
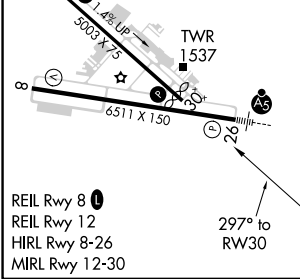
For uncompensated Baro-VNAV systems, procedure NA below -12°C or above 54°C.
Missed approach requires RNP less than RNP 1.00.

MISSED APPROACH: Climb to 6000 on track 297° to HERAG then left turn to VESZY then left turn to ISEKE and track 020° to UHSIV and hold.

ASOS 135.575	SEATTLE CENTER 123.95 290.55	LEWISTON TOWER ★ 119.4 (CTAF) 318.8	GND CON 121.9	UNICOM 122.95
------------------------	--	---	-------------------------	-------------------------



ELEV 1442	D	TDZE 1439	6000	HERAG	VESZY	ISEKE	UHSIV
			↑	↖	↖	↖	tr 020°



CATEGORY	A	B	C	D
RNP 0.30 DA	1781-1	342 (400-1)		

AUTHORIZATION REQUIRED

NW-1, 20 MAR 2025 to 17 APR 2025

NW-1, 20 MAR 2025 to 17 APR 2025