

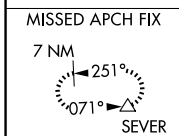
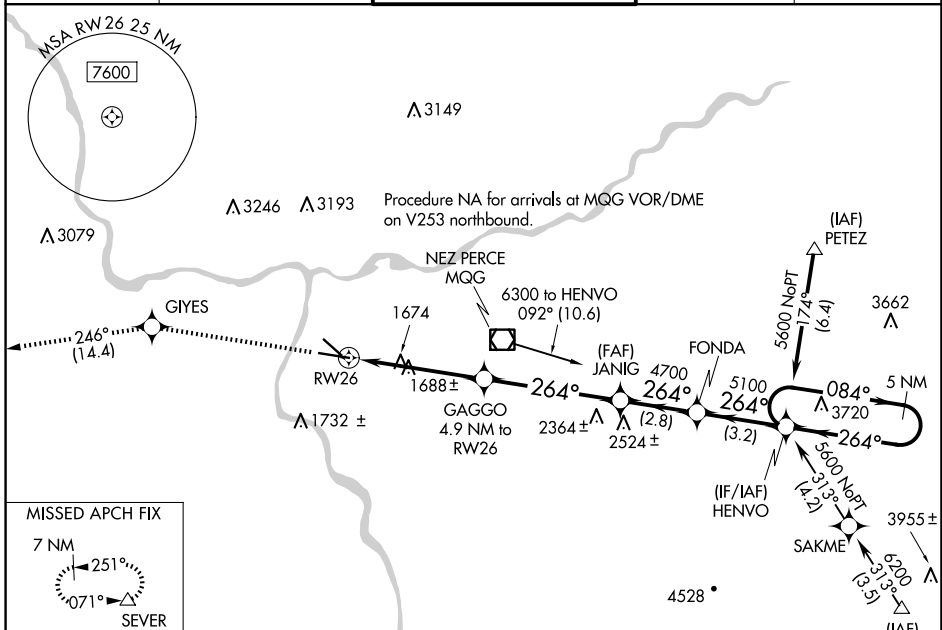
WAAS CH 78012 W26A	APP CRS 264°	Rwy Idg TDZE Apt Elev	6511 1442 1442
---------------------------------	------------------------	-----------------------------	---

RNAV (GPS) Y RWY 26

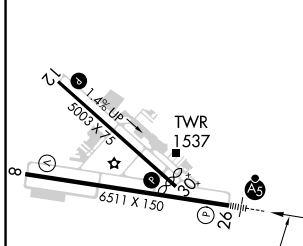
LEWISTON/NEZ PERCE COUNTY (LWS)

<p>For uncompensated Baro-VNAV systems, LNAV/VNAV NA below -17°C (2°F) or above 47°C (116°F). DME/DME RNP-0.3 NA.</p>	<p>MALS</p>	<p>MISSED APPROACH: Climb to 7000 direct GIYES and on track 246° to SEVER and hold, continue climb-in-hold to 7000.</p>

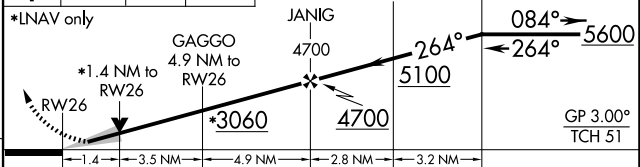
ASOS 135.575	SEATTLE CENTER 123.95 290.55	LEWISTON TOWER ★ 119.4 (CTAF) 0 318.8	GND CON 121.9	UNICOM 122.95
------------------------	--	---	-------------------------	-------------------------



ELEV 1442	D	TDZE 1442
-----------	----------	-----------



7000	GIYES	SEVER	VGSI and RNAV glidepath not coincident (VGSI Angle 3.00/TCH 51).	5 NM Holding Pattern
↑	✧	tr 246°		



CATEGORY	A	B	C	D
LPV DA		1642-1/2	200 (200-1/2)	
LNAV/VNAV DA		1962-1 1/4	520 (600-1 1/4)	
LNAV MDA	1940-1/2	498 (500-1/2)	1940-1	498 (500-1)
CIRCLING	2000-1	558 (600-1)	2280-2 1/2 838 (900-2 1/2)	2500-3 1058 (1100-3)

- REIL Rwy 8
- REIL Rwy 12
- HIRL Rwy 8-26
- MIRL Rwy 12-30

NW-1, 20 MAR 2025 to 17 APR 2025

NW-1, 20 MAR 2025 to 17 APR 2025