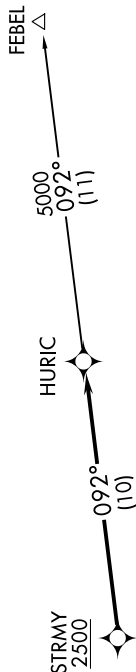


# HURIC FOUR DEPARTURE (RNAV)

SE-2, 20 MAR 2025 to 17 APR 2025

**TOP ALTITUDE:  
(JETS) 6000  
(PROPS) ASSIGNED BY ATC**

RALEIGH DEP CON  
125.3 353.675  
D-ATIS  
123.8  
CINC DEL  
120.1  
CPDLC  
GND CON  
121.9 348.6  
RALEIGH TOWER  
127.45 257.8



### TAKEOFF MINIMUMS

Rwys 5L/R: Standard.  
 Rwy 14: Standard with minimum climb of 310' per NM to 1000.  
 Rwy 23L: Standard with minimum climb of 250' per NM to 2300.  
 Rwy 23R: Standard with minimum climb of 240' per NM to 2100.  
 Rwy 32: 300-1.

NOTE: Chart not to scale.

### DEPARTURE ROUTE DESCRIPTION

TAKEOFF RUNWAYS 5L/R, 14, 23L/R, 32: Climb on assigned heading for RADAR vectors to cross STRMY at or above 2500, thence. . . .

. . . on track 092° to HURIC. Turbojets maintain 6000, propellers maintain altitude assigned by ATC. Expect clearance to filed altitude within ten minutes after departure.

FEBEL TRANSITION (HURIC4.FEBEL)

NOTE: RNAV 1.  
 NOTE: DME/DME/IRU or GPS required.  
 NOTE: RADAR required.  
 NOTE: If unable to accept climb rate, advise ATC on initial contact.

SE-2, 20 MAR 2025 to 17 APR 2025