

LOC/DME I-LEI 108.5 Chan 22	APP CRS 234°	Rwy Idg 7500 TDZE 435 Apt Elev 435
---	------------------------	---

ILS or LOC RWY 23L

RALEIGH-DURHAM INTL (RDU)

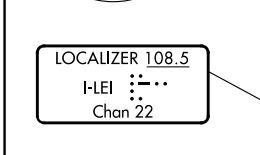
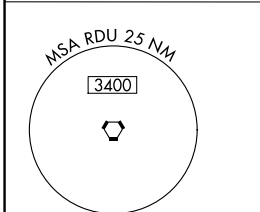
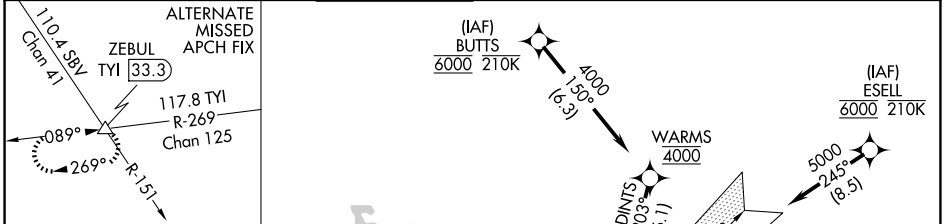
RNAV 1-DME/DME/IRU or GPS or RADAR required for procedure entry.
DME required for LOC only.

⚠ Simultaneous approach authorized. For inop ALS, increase S-ILS 23L all Cats visibility to RVR 5500. Localizer unusable for coupled approaches below 1100 or within 2 NM of threshold.

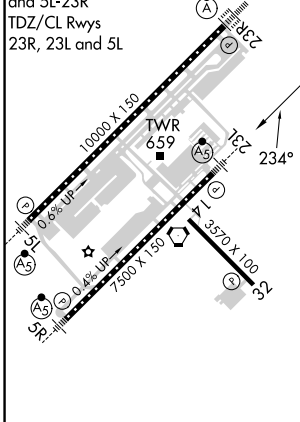


MISSED APPROACH: Climb to 1100 then climbing left turn to 2600 on heading 050° and RDU VORTAC R-092 to ZEBUL INT and hold.

D-ATIS 123.8	RALEIGH APP CON 127.675 307.9	RALEIGH TOWER 127.45 257.8	GND CON 121.9 348.6	CLNC DEL 120.1	CPDLC
------------------------	---	---	-------------------------------	--------------------------	-------



ELEV 435	D	TDZE 435
REIL Rwy 32		
MIRL Rwy 14-32		
HIRL Rwys 5R-23L and 5L-23R		
TDZ/CL Rwys 23R, 23L and 5L		



1100	2600	ZEBUL	Localizer unusable from 1 NM from threshold.	DUWON
↑	hdg 050°	RDU R-092	△	I-LEI [15.6]
* LOC only.				
BEGVE	LEPEC	APUCU	DOCAT	DINTS
I-LEI [2.4]	I-LEI [3.7]	I-LEI [6.8]	I-LEI [10]	I-LEI [12.4]
		RADAR	RADAR	
	2200	2200	3000	5000
	1200*			
GS 3.00° TCH 56				
1 NM — 1.3 NM — 3.1 NM — 3.3 NM — 2.4 NM — 3.1 NM				
CATEGORY	A	B	C	D
S-ILS 23L		806/35	371 (400-5/8)	
S-LOC 23L		840/40	405 (500-3/4)	
C CIRCLING	960-1 1/4	525 (600-1 1/4)	1020-1 1/2 585 (600-1 1/2)	1180-2 1/2 745 (800-2 1/2)