

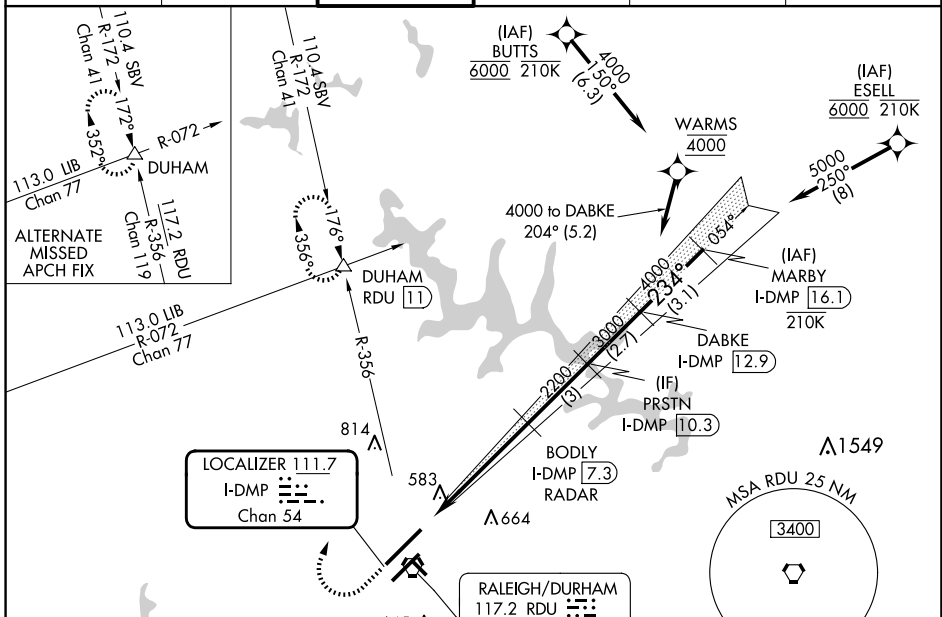
LOC/DME I-DMP 111.7 Chan 54	APP CRS 234°	Rwy Idg TDZE Apt Elev 10000 409 435
---	------------------------	---

ILS or LOC RWY 23R

RALEIGH-DURHAM INTL (RDU)

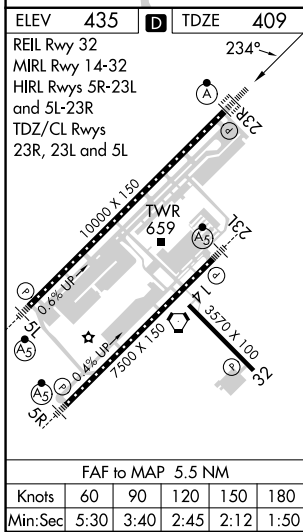
RNAV 1-DME/DME/IRU or GPS or RADAR required for procedure entry. RADAR or DME required for LOC only.	ALSF-2 	MISSED APPROACH: Climb to 1000 then climbing right turn to 2200 on RDU VORTAC R-356 to DUHAM INT/RDU 11 DME and hold.
Simultaneous approach authorized. For inop ALS increase S-LOC 23R Cat C/D visibility to 1 1/2 SM.		

D-ATIS 123.8	RALEIGH APP CON 127.675 307.9	RALEIGH TOWER 127.45 257.8	GND CON 121.9 348.6	CLNC DEL 120.1	CPDLC
------------------------	---	--------------------------------------	-------------------------------	--------------------------	-------



SE-2, 20 MAR 2025 to 17 APR 2025

SE-2, 20 MAR 2025 to 17 APR 2025



1000	2200	RDU R-356	DUHAM	VGSI and ILS glidepath not coincident (VGSI Angle 3.00/TCH 69).	MARBY I-DMP [1.6]	
*LOC only.		BODY I-DMP [7.3] RADAR	PRSTN I-DMP [10.3]	DABKE I-DMP [12.9]		
I-DMP [1.8]	*I-DMP [3.4]	2200	3000	4000	5000	
1.6 NM		3.9 NM		3 NM	2.7 NM	3.1 NM
GS 3.00° TCH 55						
CATEGORY	A		B		D	
S-ILS 23R	609/18 200 (200-1/2)					
S-LOC 23R	980/24 571 (600-1/2)		980-1 1/4 571 (600-1 1/4)			
CIRCLING	980-1 545 (600-1)		1020-1 1/2 585 (600-1 1/2)		1180-2 1/2 745 (800-2 1/2)	