

LOC/DME I-GKK 109.1 Chan 28	APP CRS 054°	Rwy Idg TDZE Apt Elev 10000 384 435
--	------------------------	---

ILS or LOC RWY 5L

RALEIGH-DURHAM INTL (RDU)

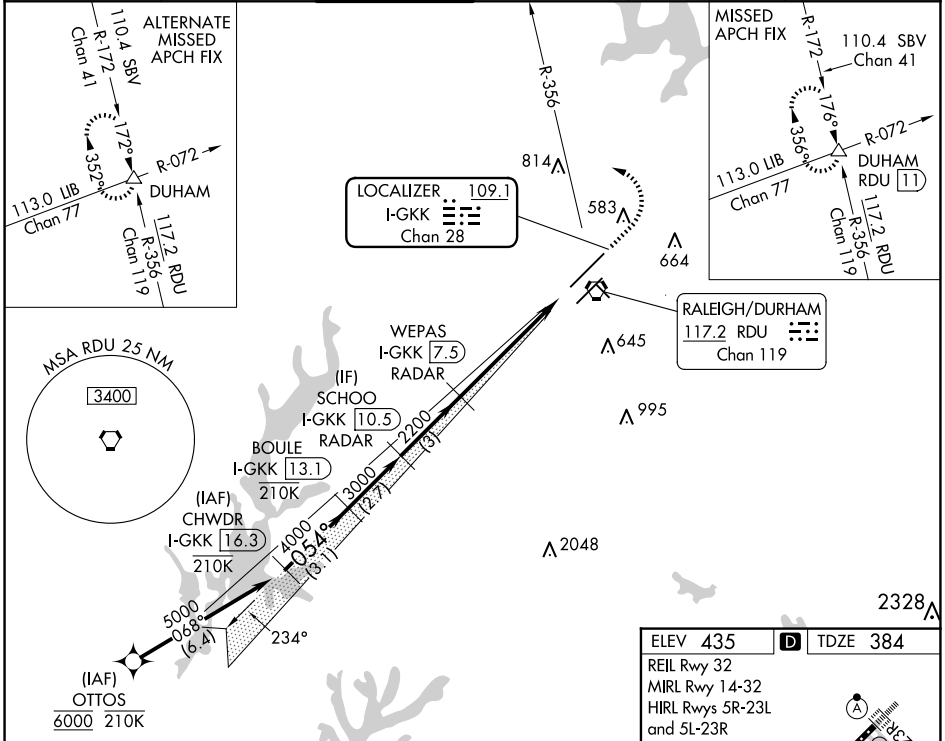
RNAV 1-DME/DME/IRU or GPS or RADAR required for procedure entry. DME or RADAR required for LOC only.

Simultaneous approach authorized.

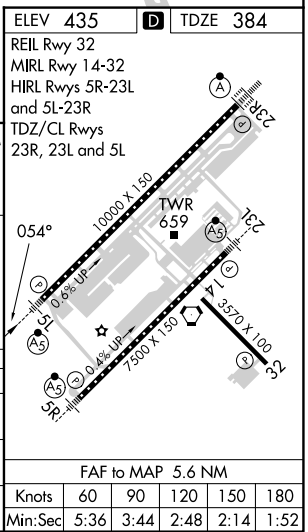
MALSR

MISSED APPROACH: Climb to 1000 then climbing left turn to 2200 on heading 310° and RDU VORTAC R-356 to DUHAM INT/ RDU 11 DME and hold.

D-ATIS 123.8	RALEIGH APP CON 127.675 307.9	RALEIGH TOWER 127.45 257.8	GND CON 121.9 348.6	CLNC DEL 120.1	CPDLC
------------------------	---	--------------------------------------	-------------------------------	--------------------------	-------



CHVDR I-GKK [16.3]	BOULE I-GKK [13.1]	SCHOO I-GKK [10.5] RADAR	WEPAS I-GKK [7.5] RADAR	1000	2200	RDU R-356	DUHAM		
VGSi and ILS glidepath not coincident (VGSi Angle 3.00/TCH 72).				*I-GKK [3.1]				*LOC only.	
GS 3.00° TCH 57				310° hdg					
-3.1 NM		-2.7 NM		-3 NM		-4.3 NM		-1.3 NM	
CATEGORY	A	B	C	D					
S-ILS 5L	598/18 214 (200-½)								
S-LOC 5L	840/24 456 (500-½)		840/45 456 (500-¾)						
CIRCLING	960-1 525 (600-1)		1020-1½ 585 (600-1½)		1180-2½ 745 (800-2½)				



SE-2, 20 MAR 2025 to 17 APR 2025

SE-2, 20 MAR 2025 to 17 APR 2025