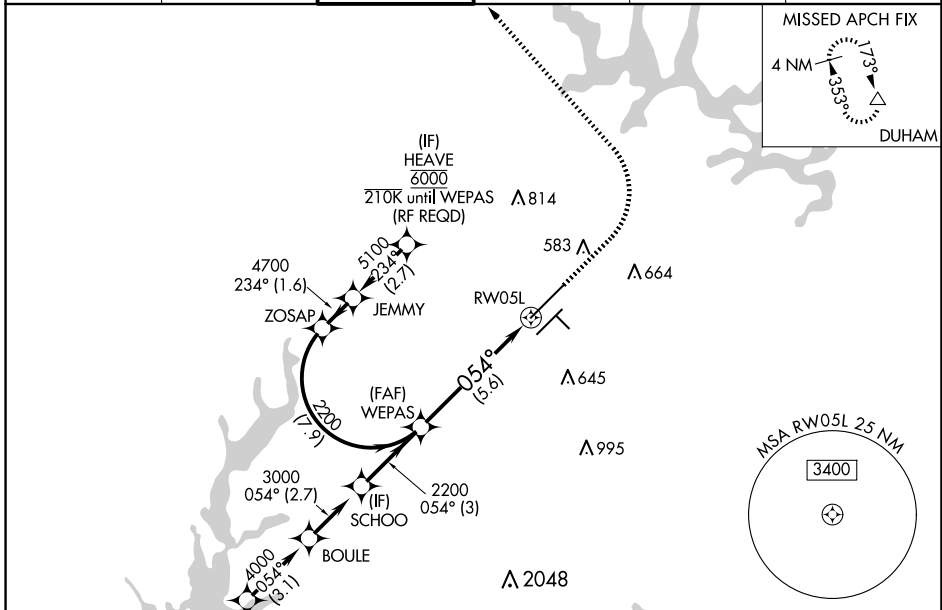


APP CRS	Rwy Idg	10000
054°	TDZE	384
	Apt Elev	435

RNAV (RNP) Z RWY 5L

RALEIGH-DURHAM INTL (RDU)

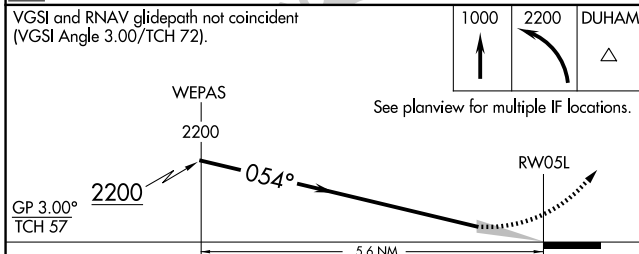
RNP AR APCH-GPS.				MALSR	MISSED APPROACH: Climb to 1000 then climbing left turn to 2200 direct DUHAM and hold.
▼ For uncompensated Baro-VNAV systems, procedure NA below -1°C or above 54°C. Simultaneous approach authorized, except for arrivals at HEAVE. For inop ALS, increase RNP 0.10 all Cats visibility to RVR 4500.					
D-ATIS	RALEIGH APP CON	RALEIGH TOWER	GND CON	CLNC DEL	CPDLC
123.8	127.675 307.9	127.45 257.8	121.9 348.6	120.1	



SE-2, 20 MAR 2025 to 17 APR 2025

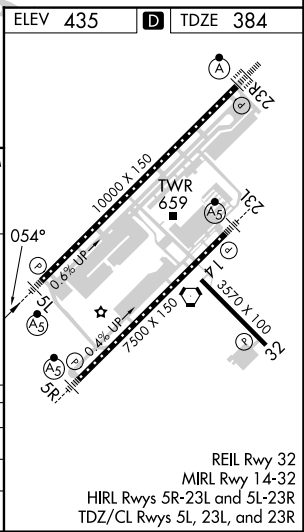
SE-2, 20 MAR 2025 to 17 APR 2025

(IAF) OTTOS	6000 210K
(IAF) CHWDR	5000 210K
(IF) BOULE	4000 0.54° (3.1)
(IF) SCHOO	3000 0.54° (2.7)
(FAF) WEPAS	2200 0.54° (3)
(IF) JEMMY	5100 2.7 (2.7)
(IF) HEAVE	6000 210K until WEPAS (RF REQD)



CATEGORY	A	B	C	D
RNP 0.10 DA		684/24	300 (300-½)	
RNP 0.30 DA		780/35	396 (400-⅙)	

AUTHORIZATION REQUIRED



REIL Rwy 32
MIRL Rwy 14-32
HIRL Rws 5R-23L and 5L-23R
TDZ/CL Rws 5L, 23L, and 23R