

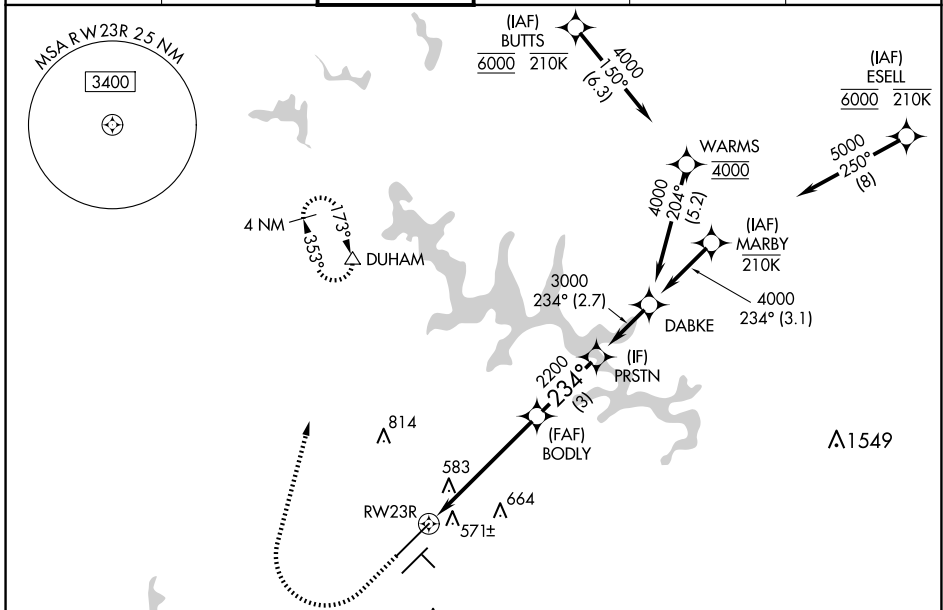
WAAS CH 45613 W23A	APP CRS 234°	Rwy Idg 10000 TDZE 409 Apt Elev 435
--	------------------------	--

RNAV (GPS) Y RWY 23R

RALEIGH-DURHAM INTL (RDU)

RNP APCH - GPS		ALSIF-2	MISSED APPROACH: Climb to 1000 then climbing right turn to 2200 direct DUHAM and hold.
<p>Simultaneous approach authorized. LNAV procedure NA during simultaneous operations. Use of FD or AP providing RNAV track guidance required during simultaneous operations.</p> <p>For uncompensated Baro-VNAV systems, LNAV/VNAV NA below -12°C or above 54°C. For inop ALS, increase LNAV/VNAV all Cats visibility to RVR 6000 and LNAV Cat C/D visibility to 1½ NM.</p>			

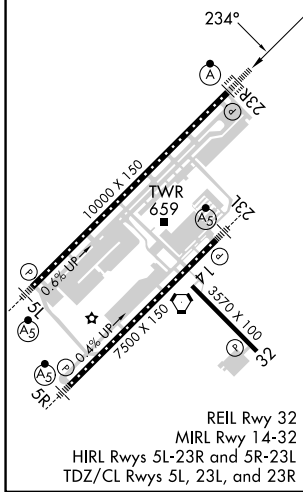
D-ATIS 123.8	RALEIGH APP CON 127.675 307.9	RALEIGH TOWER 127.45 257.8	GND CON 121.9 348.6	CLNC DEL 120.1	CPDLC
------------------------	---	--------------------------------------	-------------------------------	--------------------------	-------



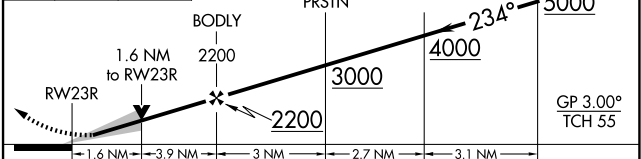
SE-2, 20 MAR 2025 to 17 APR 2025

SE-2, 20 MAR 2025 to 17 APR 2025

ELEV 435	D	TDZE 409
-----------------	----------	-----------------



1000	2200	DUHAM	VGSI and RNAV glidepath not coincident (VGSI Angle 3.00/TCH 69).
------	------	-------	--



CATEGORY	A	B	C	D
LPV DA		609/18	200 (200-½)	
LNAV/VNAV DA		826/40	417 (400-¾)	
LNAV MDA	980/24	571 (600-½)	980-1¼	571 (600-1¼)
C CIRCLING	980-1	545 (600-1)	1020-1½ 585 (600-1½)	1180-2½ 745 (800-2½)