


WAAS CH 81809 W22A	APP CRS 223°	Rwy Idg TDZE Apt Elev	8001 598 598
--	------------------------	-----------------------------	---

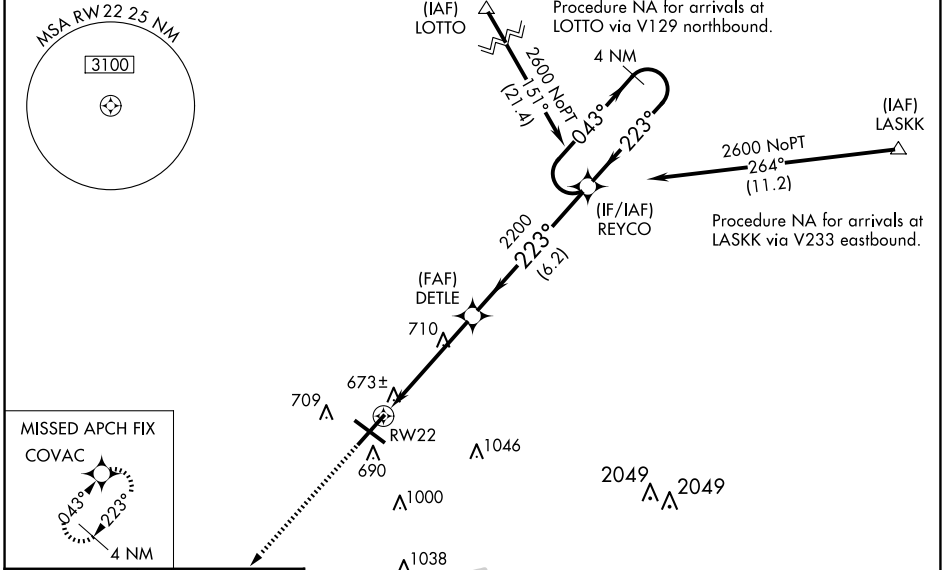
RNAV (GPS) RWY 22
ABRAHAM LINCOLN CAPITAL (SPI)

RNP APCH - GPS.

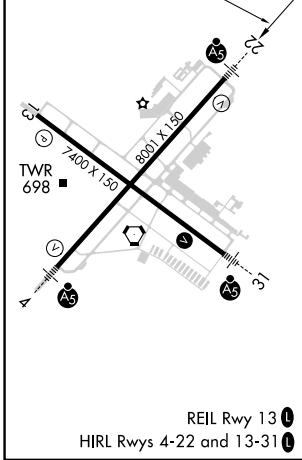
ASR For uncompensated Baro-VNAV systems, LNAV/VNAV NA below -16°C or above 54°C. When local altimeter not received, use Lincoln altimeter setting: increase LPV DA to 942 feet and all visibilities ½ SM, LNAV/VNAV DA to 1108 feet and all visibilities ½ SM; increase all MDAs 60 feet and visibility LNAV and Circling Cat C/D ½ SM. Baro-VNAV and VDP NA when using Lincoln altimeter setting. For inop ALS, increase LPV all Cats visibility to ¾ SM. For inop ALS when using Lincoln altimeter setting, increase LPV all Cats visibility to 1 SM, increase LNAV/VNAV all Cats visibility to 1 ½ SM.


MALSR  MISSED APPROACH: Climb to 2700 direct COVAC and hold.

ATIS 127.65 270.1	SAINT LOUIS APP CON * 126.15 323.0	SPRINGFIELD TOWER * 121.3 (CTAF) 0 257.8	GND CON 121.9 348.6	CLNC DEL 121.7	UNICOM 122.95
-----------------------------	--	--	-------------------------------	--------------------------	-------------------------



ELEV 598	D	TDZE 598
----------	----------	----------



2700	COVAC	4 NM Holding Pattern			
↑		REYCO	2600		
1 NM to RWY 22	DETLE	043° →	← 223°		
1 NM	3.8 NM	6.2 NM	GP 3.00° TCH 54		
CATEGORY	A	B	C	D	
LPV DA	884-½		286 (300-½)		
LNAV/VNAV DA	1050-¾		452 (500-¾)		
LNAV MDA	980-½		382 (400-½)		980-⅝ 382 (400-⅝)
C CIRCLING	1040-1¼ 442 (500-1¼)	1100-1¼ 502 (600-1¼)	1360-2¼ 762 (800-2¼)	1380-2½ 782 (800-2½)	

EC-3, 20 MAR 2025 to 17 APR 2025

EC-3, 20 MAR 2025 to 17 APR 2025