

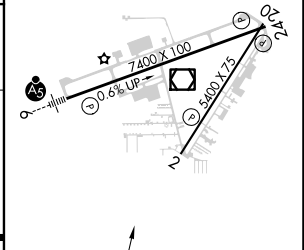
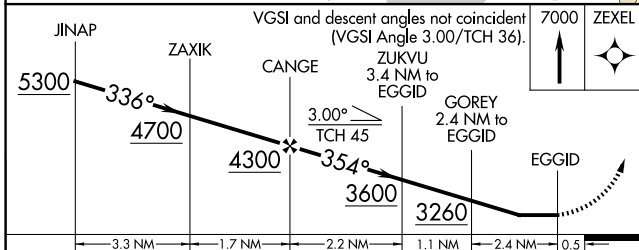
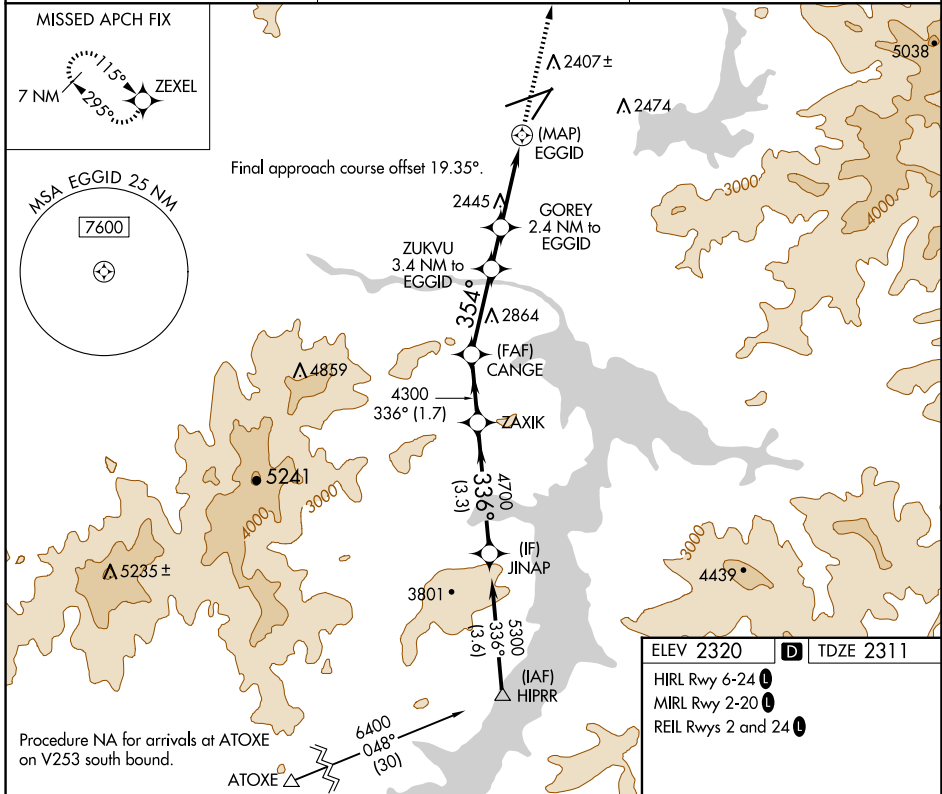
APP CRS	Rwy Idg	5400
354°	TDZE	2311
	Apt Elev	2320

RNAV (GPS) RWY 2

COEUR D'ALENE/PAPPY BOYINGTON FLD (COE)

RNP APCH-GPS.	MISSED APPROACH: Climb to 7000 direct ZEXEL and hold, continue climb-in-hold to 7000.
<p>▼ Rwy 2 helicopter visibility reduction below 1 SM NA.</p> <p>▲ Straight-in Rwy 2 NA at night, Circling Rwy 2 NA at night.</p>	

AWOS-3PT 135.075	SPOKANE APP CON 132.1 263.0	UNICOM 122.8 (CTAF)
----------------------------	---------------------------------------	-------------------------------



CATEGORY	A	B	C	D
LNVA MDA	2700-1	389 (400-1)	2700-1 $\frac{1}{8}$	389 (400-1 $\frac{1}{8}$)
CIRCLING	2740-1 420 (500-1)	2880-1 560 (600-1)	3020-2 700 (700-2)	3940-3 1620 (1700-3)

NW-1, 20 MAR 2025 to 17 APR 2025

NW-1, 20 MAR 2025 to 17 APR 2025