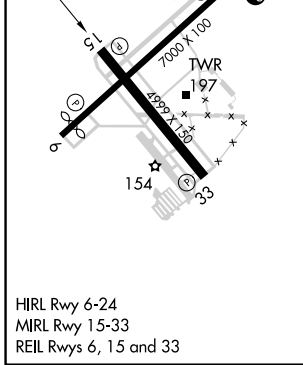
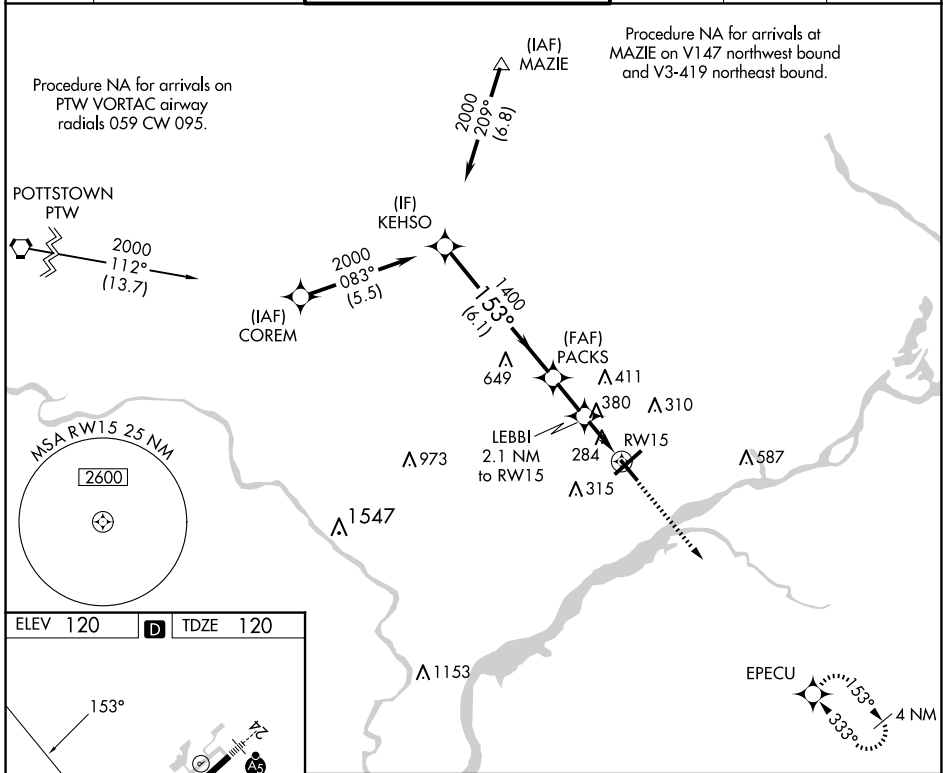


APP CRS	Rwy Idg	4999
153°	TDZE	120
	Apt Elev	120

RNAV (GPS) RWY 15

NORtheast PHILADELPHIA (PNE)

<p>⚠ When local altimeter setting not received, use Philadelphia Intl altimeter setting: increase all MDAs 60 feet and LNAV visibility Cat C/D ¼ SM and Circling visibility Cat C/D ¼ SM. DME/DME RNP-0.3 NA.</p>		<p>MISSED APPROACH: Climb to 2000 direct EPECU and hold.</p>			
<p>ATIS 121.15</p>	<p>PHILADELPHIA APP CON 123.8 291.7</p>	<p>NORtheast PHILADELPHIA TOWER * 126.9 (CTAF) 278.8</p>	<p>GND CON 121.7</p>	<p>CLNC DEL 127.25</p>	<p>UNICOM 122.95</p>



	KEHSO	PACKS	LEBBI 2.1 NM to RWY 15	RWY 15	2000	EPECU
	2000	153°	3.00° TCH 39	1400	820	
	6.1 NM		1.8 NM	2.1 NM		
CATEGORY	A	B	C	D		
LNAV MDA	660-1	540 (600-1)	660-1½	540 (600-1½)		
CIRCLING	700-1	580 (600-1)	720-1½ 600 (600-1½)	780-2 660 (700-2)		

NE-4, 20 MAR 2025 to 17 APR 2025

NE-4, 20 MAR 2025 to 17 APR 2025