

HI-ILS or LOC/DME RWY 32

LOC I-BKF 109.7	APCH CRS 323°	Rwy ldg 11,006 TDZE 5663 Arprt Elev 5663	AL-538 [USAF]	BUCKLEY SFB (KBKF)
----------------------------------	--------------------------------	--	----------------------	---------------------------

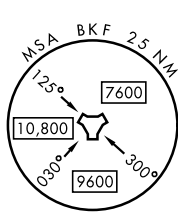
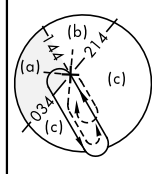
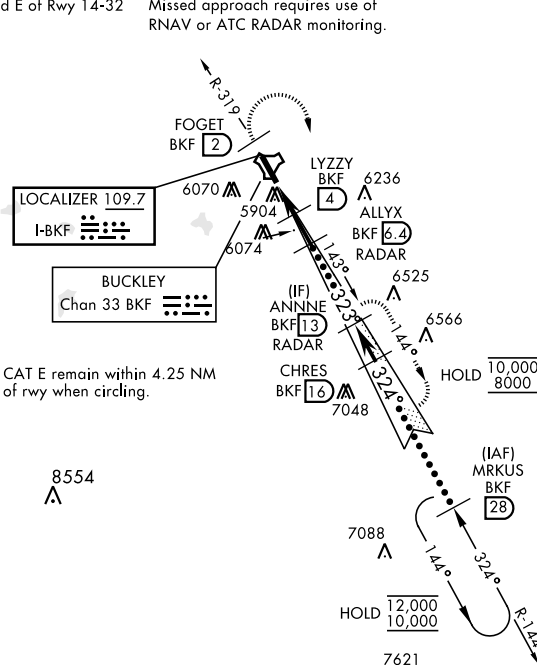
▲ * When ALS inop, increase CAT CDE RVR to 40 and vis to $\frac{3}{4}$ miles.
****** When ALS inop, increase CAT CDE vis to $1\frac{1}{4}$ miles.

ALS-F1 (A1)

MISSED APPROACH: Climb on BKF TACAN R-319 to FOGET, then climbing right turn to 8200 and intercept BKF R-144 to ANNNE and hold or as directed by ATC.

ATIS * 119.675 259.3	DENVER APP CON 128.45 251.075	TOWER * 121.0 291.675	GND CON 121.6 275.8	CLNC DEL 121.6 275.8
---------------------------------------	--	--	--------------------------------------	---------------------------------------

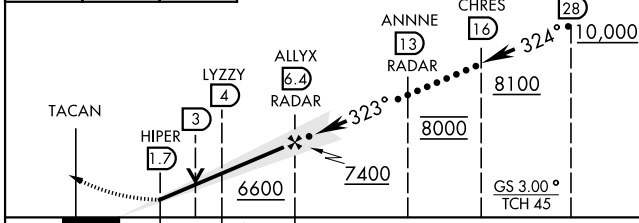
***** Circling not authorized E of Rwy 14-32** Missed approach requires use of RNAV or ATC RADAR monitoring.



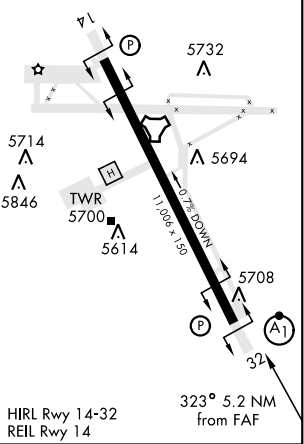
SW-1, 20 MAR 2025 to 17 APR 2025

SW-1, 20 MAR 2025 to 17 APR 2025

EMERG SAFE ALT 100 NM 16,500



ELEV 5663	TDZE 5663
------------------	------------------



CATEGORY	C	D	E
S-ILS 32*	5863/24	200	(200- $\frac{1}{2}$)
S-LOC 32**	6280- $\frac{1}{8}$	617	(700- $\frac{1}{8}$)
CIRCLING ***	6360-2 697 (700-2)	6400-2 $\frac{1}{4}$ 737 (800-2 $\frac{1}{4}$)	6420-2 $\frac{3}{4}$ 757 (800-2 $\frac{3}{4}$)

HI-ILS or LOC/DME RWY 32