

APCH CRS 323°	Rwy Idg TDZE Arprt Elev	11,006 5663 5663
-------------------------	-------------------------------	---

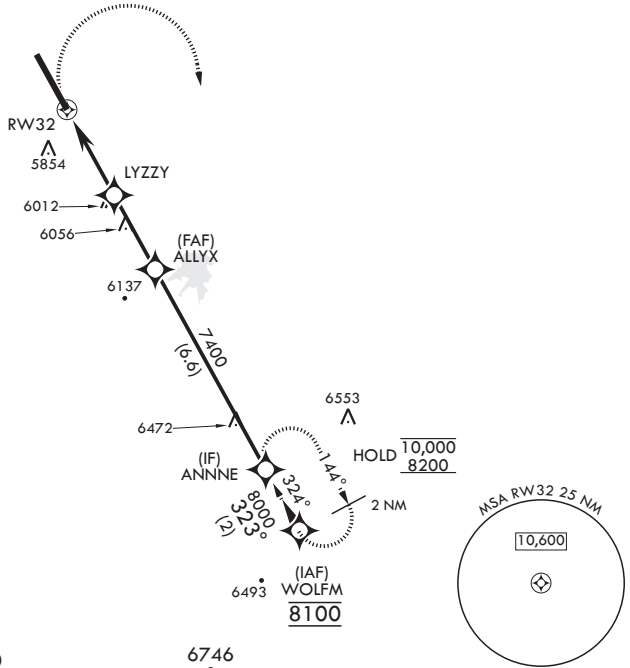
AL-538 (USAF)

BUCKLEY SFB (KBKF)

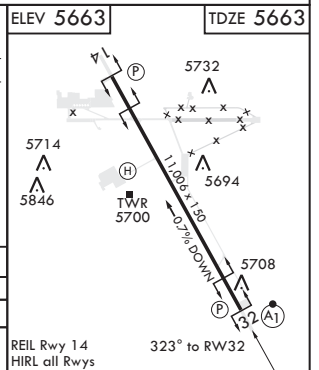
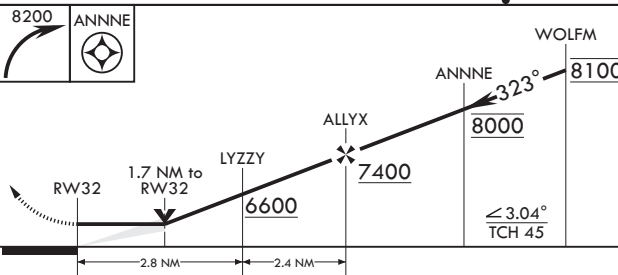
GPS required	ALSF-1	MISSED APPROACH: Climbing right turn to 8200 to ANNNE and hold or as directed by ATC.
* When ALS inop increase CAT AB RVR to 55, vis to 1 mile; CAT CD vis to 1 3/4 miles. ** Circling NA East of Rwy 14-32.		

ATIS* 119.675 259.3	DENVER APP CON/DEP CON 128.45 251.075	TOWER* 121.0 291.675	GND CON 121.6 275.8	CLNC DEL 121.6 275.8
-------------------------------	---	--------------------------------	-------------------------------	--------------------------------

DME/DME RNP -0.3 NA



EMERG SAFE ALT 100 NM 16,500



CATEGORY	A	B	C	D
LNAV MDA*	6260/24	597 (600-1/2)	6260-1 1/4	597 (600-1 1/4)
CIRCLING**	6260-1	597 (600-1)	6360-2 697 (700-2)	6400-2 1/4 737 (800-2 1/4)

SW-1, 20 MAR 2025 to 17 APR 2025

SW-1, 20 MAR 2025 to 17 APR 2025