

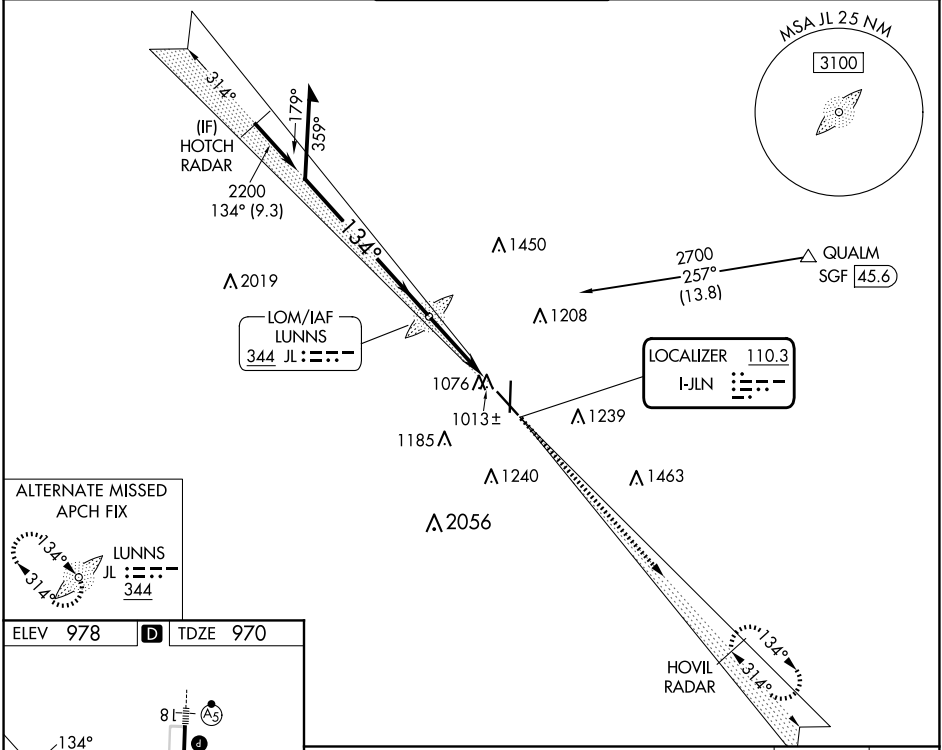
LOC I-JLN 110.3	APP CRS 134°	Rwy Idg 5813 TDZE 970 Apt Elev 978
---------------------------	------------------------	---

ILS or LOC RWY 13

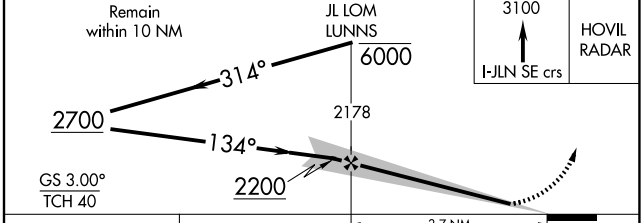
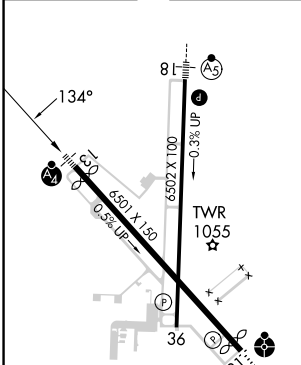
JOPLIN RGNL (JLN)

ADF required for LOC only. RADAR required.		MALSFS	MISSED APPROACH: Climb to 3100 on I-JLN LOC localizer course southeast to HOVIL/RADAR and hold.
Autopilot coupled approach NA below 1147. Inop table does not apply to S-ILS 13 all Cats. MALSFS (NSTD) 1368'.			

ATIS 120.85	KANSAS CITY CENTER 128.6 282.325	JOPLIN TOWER* 119.8 (CTAF) 0	GND CON 121.6	UNICOM 122.95
-----------------------	--	--	-------------------------	-------------------------



ELEV 978	D	TDZE 970
----------	----------	----------



CATEGORY	A	B	C	D
S-ILS 13		1170/40	200 (200-¾)	
S-LOC 13		1300/40	330 (400-¾)	
C CIRCLING	1460-1 482 (500-1)	1500-1 522 (600-1)	1540-1½ 562 (600-1½)	1580-2 602 (700-2)

NC-3, 20 MAR 2025 to 17 APR 2025

NC-3, 20 MAR 2025 to 17 APR 2025